



PUBLIC BUILDING COMMISSION OF CHICAGO

WILLIAM J. ONAHAN ELEMENTARY SCHOOL LINKED ANNEX





PUBLIC BUILDING COMMISSION OF CHICAGO

WILLIAM J. ONAHAN ELEMENTARY SCHOOL LINKED ANNEX

WELCOME

KAREN KOEGLER,
PRINCIPAL,

WILLIAM J. ONAHAN ELEMENTARY SCHOOL



PUBLIC BUILDING COMMISSION OF CHICAGO

WILLIAM J. ONAHAN ELEMENTARY SCHOOL LINKED ANNEX

REMARKS

MARY O'CONNOR,
41ST WARD ALDERMAN, CITY OF CHICAGO



PUBLIC BUILDING COMMISSION OF CHICAGO

WILLIAM J. ONAHAN ELEMENTARY SCHOOL LINKED ANNEX

AGENDA

WELCOME

KAREN KOEGLER, *PRINCIPAL, WILLIAM J. ONAHAN ELEMENTARY SCHOOL*

REMARKS

MARY O'CONNOR, *41ST WARD ALDERMAN, CITY OF CHICAGO*

INTRODUCTIONS

JOSE ALVAREZ, *SCHOOL RELATIONS, CPS*

BUILDING DESIGN

ERIN LAVIN CABONARGI, *EXECUTIVE DIRECTOR, PBC*

QUESTION AND ANSWER

JOSE ALVAREZ, *SCHOOL RELATIONS, CPS*



PUBLIC BUILDING COMMISSION OF CHICAGO

WILLIAM J. ONAHAN ELEMENTARY SCHOOL LINKED ANNEX

PBC PRESENTATION ON BUILDING DESIGN




ERIN LAVIN CABONARGI,
EXECUTIVE DIRECTOR, PBC

PUBLIC BUILDING COMMISSION OF CHICAGO

WILLIAM J. ONAHAN ELEMENTARY SCHOOL LINKED ANNEX

Onahan Elementary School: 6634 W. Raven St.



- Proposed Site 
- TIF District 
- Ward Boundary 



PUBLIC BUILDING COMMISSION OF CHICAGO

WILLIAM J. ONAHAN ELEMENTARY SCHOOL LINKED ANNEX





PUBLIC BUILDING COMMISSION OF CHICAGO

WILLIAM J. ONAHAN ELEMENTARY SCHOOL LINKED ANNEX





PUBLIC BUILDING COMMISSION OF CHICAGO

WILLIAM J. ONAHAN ELEMENTARY SCHOOL LINKED ANNEX





PUBLIC BUILDING COMMISSION OF CHICAGO

WILLIAM J. ONAHAN ELEMENTARY SCHOOL LINKED ANNEX





PUBLIC BUILDING COMMISSION OF CHICAGO

WILLIAM J. ONAHAN ELEMENTARY SCHOOL LINKED ANNEX



©2004 James Steinkamp: Steinkamp/Ballogg Photography



©2004 James Steinkamp: Steinkamp/Ballogg Photography



PUBLIC BUILDING COMMISSION OF CHICAGO

WILLIAM J. ONAHAN ELEMENTARY SCHOOL LINKED ANNEX

PROJECT PROGRAM:

Existing Building:

- 58,588 SF
- 21 Classrooms
- Library
- Gymnasium
- Auditorium
- Kitchen & Dining Facility
- Administrative Suite

New Annex & Renovations:

- 23,678 SF
- 9 Classrooms
- Computer Lab
- Linked Connection to Existing Building
- Renovation of existing computer classroom to enlarge Library

Green Roof:

- Partial Green & Reflective Roof

PUBLIC BUILDING COMMISSION OF CHICAGO

WILLIAM J. ONAHAN ELEMENTARY SCHOOL LINKED ANNEX

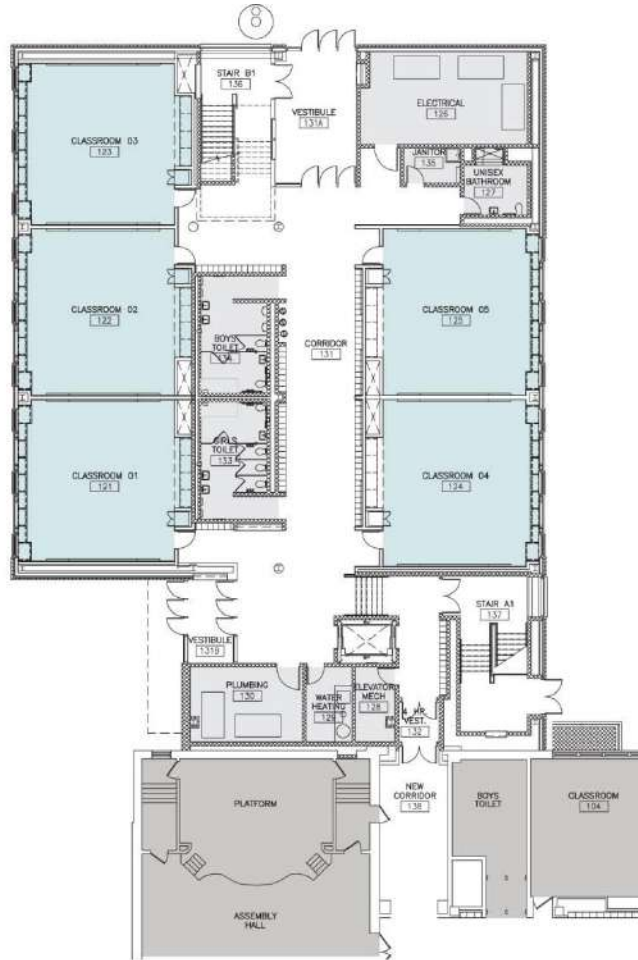


Site Plan - William J. Onahan Elementary

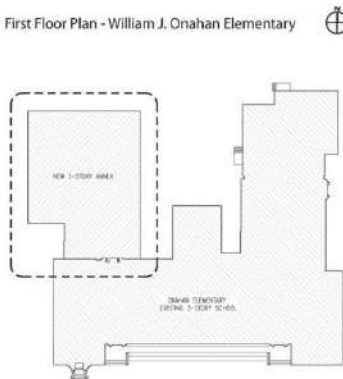


PUBLIC BUILDING COMMISSION OF CHICAGO

WILLIAM J. ONAHAN ELEMENTARY SCHOOL LINKED ANNEX



First Floor Plan - William J. Onahan Elementary

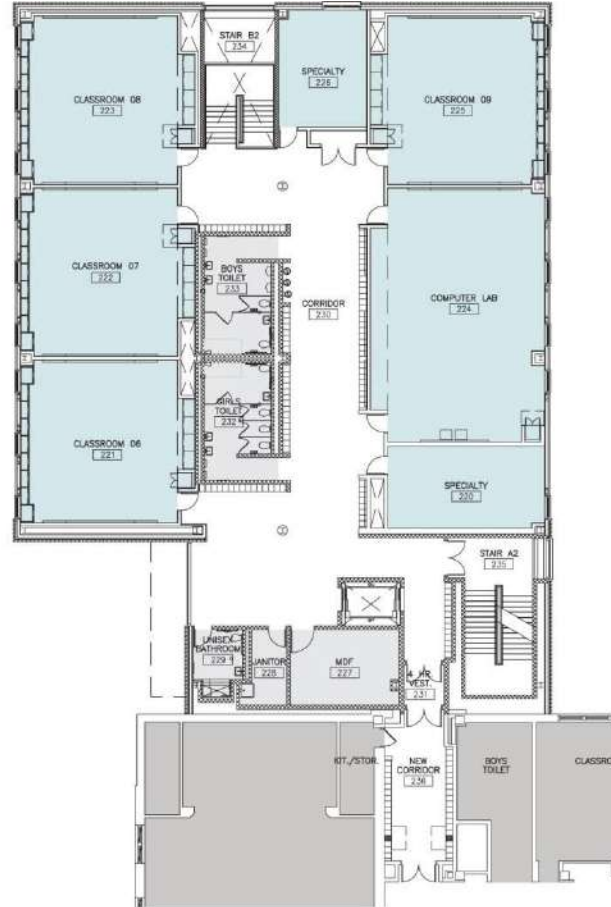


CORE ACADEMIC
 BUILDING SERVICES

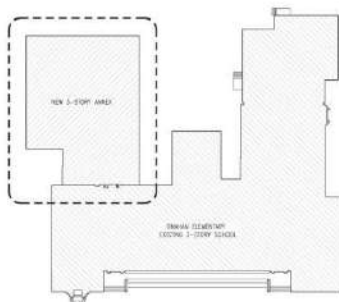


PUBLIC BUILDING COMMISSION OF CHICAGO

WILLIAM J. ONAHAN ELEMENTARY SCHOOL LINKED ANNEX



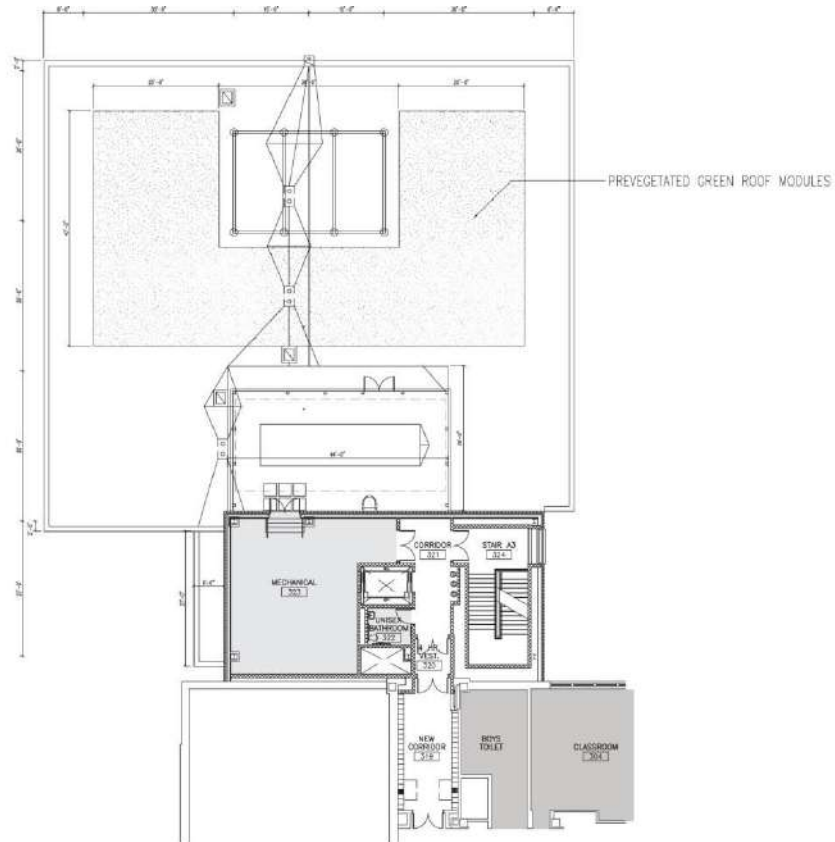
Second Floor Plan - William J. Onahan Elementary



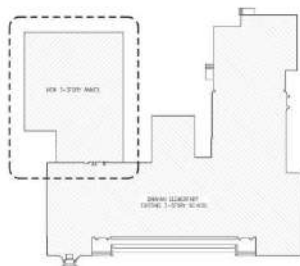
CORE ACADEMIC
 BUILDING SERVICES

PUBLIC BUILDING COMMISSION OF CHICAGO

WILLIAM J. ONAHAN ELEMENTARY SCHOOL LINKED ANNEX



Third Floor Plan - William J. Onahan Elementary



GREEN ROOF
 BUILDING SERVICES



PUBLIC BUILDING COMMISSION OF CHICAGO

WILLIAM J. ONAHAN ELEMENTARY SCHOOL LINKED ANNEX

PROJECT DEVELOPMENT SCHEDULE:

MAY-JULY 2010	LINKED ANNEX PROTOTYPE DEVELOPMENT
FEBRUARY 2011	CPS APPROVAL TO UNDERTAKE PROJECT
AUGUST 2011	DESIGN DEVELOPMENT DOCUMENTS ISSUED
DECEMBER 2011	BID DOCUMENTS ISSUED
SUMMER-FALL 2012	CONSTRUCTION BY PBC & FURNITURE, FIXTURES & EQUIPMENT BY CPS
JANUARY 2013	FACILITY OPENING



PUBLIC BUILDING COMMISSION OF CHICAGO

WILLIAM J. ONAHAN ELEMENTARY SCHOOL LINKED ANNEX

Commitment to Sustainable Development for the Environment

- Diversion of construction waste from landfills
- Utilization of durable and recycled materials in construction
- Reflective and green roofs
- Light sensors and daylight harvesting
- Solar-powered features
- High efficiency heating and cooling systems
- Low flow/low consumption water usage
- Native and adaptive landscape species
- Aggressive stormwater management



PUBLIC BUILDING COMMISSION OF CHICAGO

WILLIAM J. ONAHAN ELEMENTARY SCHOOL LINKED ANNEX

Commitment to Economic Sustainability Programs for the Community

- Programs Include:
 - Bid incentives for the employment of apprentices
 - Bid incentives for the employment of minority and female workers
 - Contract provisions that require at least 50% of the labor force be residents of the City of Chicago
 - Contract provisions with regard for community hiring, helping to employ those closest to the work at hand
 - Contract provisions that require minority- and women-owned business participation
 - Contract provisions for local business participation



PUBLIC BUILDING COMMISSION OF CHICAGO

WILLIAM J. ONAHAN ELEMENTARY SCHOOL LINKED ANNEX



QUESTION & ANSWER