



Chicago
Public
Library



PUBLIC BUILDING COMMISSION OF CHICAGO

Albany Park Branch Library





Chicago
Public
Library



PUBLIC BUILDING COMMISSION OF CHICAGO
Albany Park Branch Library

AGENDA

WELCOME AND INTRODUCTION

Alderman Margaret Laurino

PBC PRESENTATION ON NEW LIBRARY DEVELOPMENT

Erin Lavin Cabonargi, PBC

CPL PRESENTATION ON NEW LIBRARY SERVICES

Commissioner Brian Bannon, CPL



Chicago
Public
Library



PUBLIC BUILDING COMMISSION OF CHICAGO

Albany Park Branch Library

WELCOME AND INTRODUCTION

ALDERMAN MARGARET LAURINO
39TH WARD, CITY OF CHICAGO



Chicago
Public
Library



PUBLIC BUILDING COMMISSION OF CHICAGO

Albany Park Branch Library

PBC PRESENTATION ON NEW LIBRARY DEVELOPMENT

ERIN LAVIN CABONARGI
EXECUTIVE DIRECTOR, PBC



Chicago
Public
Library

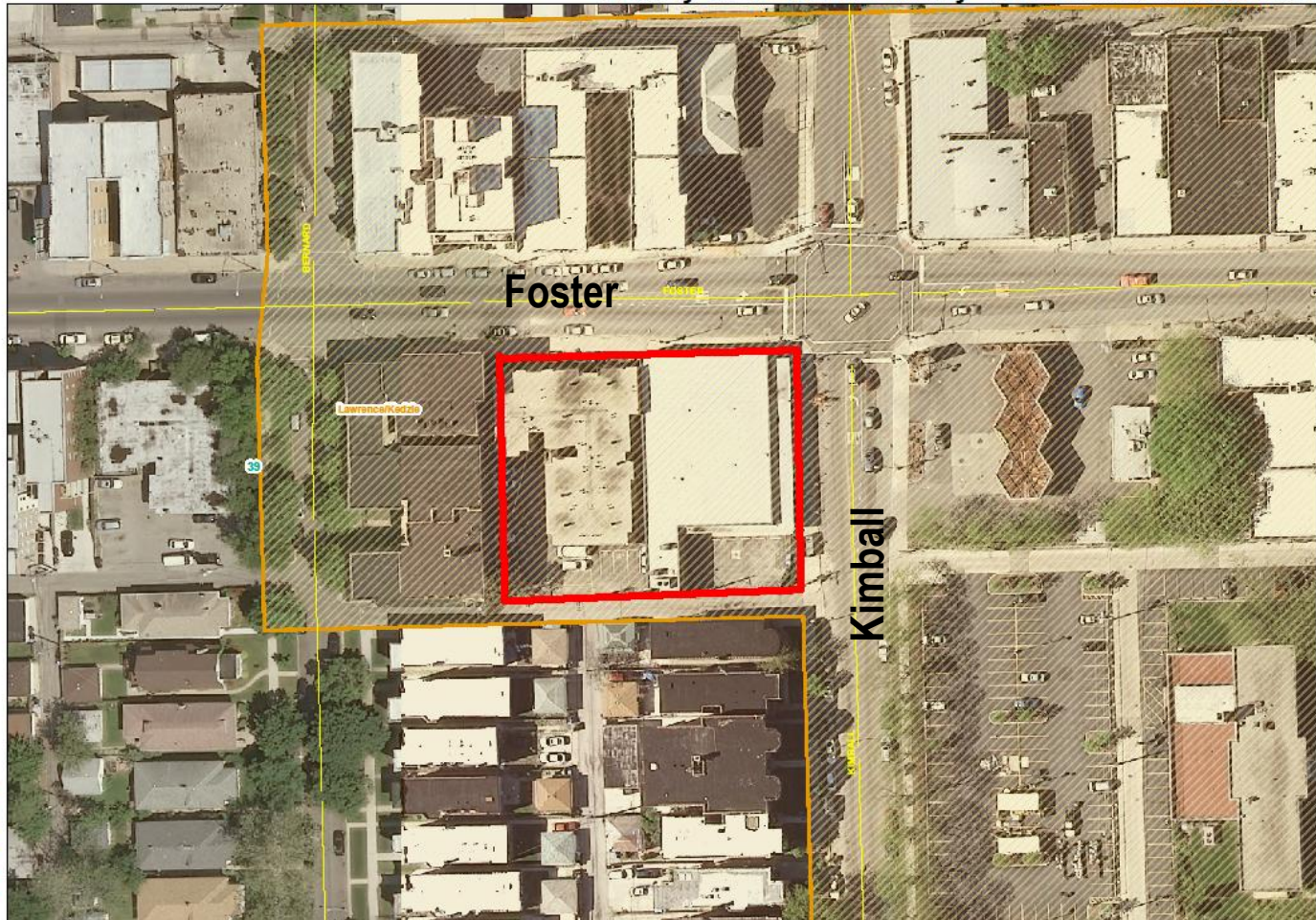


PUBLIC BUILDING COMMISSION OF CHICAGO

Albany Park Branch Library



Albany Park Branch Library - SWC Foster and Kimball



Project Site



TIF District



Ward





Chicago
Public
Library



PUBLIC BUILDING COMMISSION OF CHICAGO

Albany Park Branch Library



Recent Construction-Richard M. Daley Branch Library



Chicago
Public
Library



PUBLIC BUILDING COMMISSION OF CHICAGO

Albany Park Branch Library



Rendering of Proposed Library



Chicago
Public
Library



PUBLIC BUILDING COMMISSION OF CHICAGO

Albany Park Branch Library



Recent Construction-Richard M. Daley Branch Library



Chicago
Public
Library



PUBLIC BUILDING COMMISSION OF CHICAGO

Albany Park Branch Library



Recent Construction-Little Village Branch Library



Chicago
Public
Library



PUBLIC BUILDING COMMISSION OF CHICAGO

Albany Park Branch Library



Vestibule-Richard M. Daley Branch Library



Chicago
Public
Library



PUBLIC BUILDING COMMISSION OF CHICAGO

Albany Park Branch Library



Reading Room-Richard M. Daley Branch Library



Chicago
Public
Library



PUBLIC BUILDING COMMISSION OF CHICAGO

Albany Park Branch Library



Reading Room-Greater Grand Crossing Branch Library



Chicago
Public
Library



PUBLIC BUILDING COMMISSION OF CHICAGO

Albany Park Branch Library



Reading Room-Richard M. Daley Branch Library



Chicago
Public
Library



PUBLIC BUILDING COMMISSION OF CHICAGO

Albany Park Branch Library

EXISTING BUILDING FEATURES

- 10,555 Square Feet
- No on-site parking for patron vehicles
- No landscaped areas
- Outdated heating and cooling system
- Does not meet current requirements to be physically accessible throughout for wheel chair patrons
- Reading Room Seating Capacity – 76
- Book Capacity – 44,000 volumes
- Multipurpose Room – Seating capacity:100 patrons
- 10 Computers

NEW BUILDING FEATURES

- 16,300 Square Feet
- On-site parking for 16 vehicles (one for handicapped patrons)
- Attractive landscaping with a generous Reading Garden planned on the west side of the new library
- High-efficiency boilers/geothermal system
- Physically accessible throughout for wheel chair patrons
- Reading Room Seating Capacity – 144
- New opening day collection and increased capacity
- Multipurpose Room – Seating capacity:125 patrons
- 38 Public Computers
- Laptop computer connections at study tables
- Wireless connection inside and outside





Chicago
Public
Library

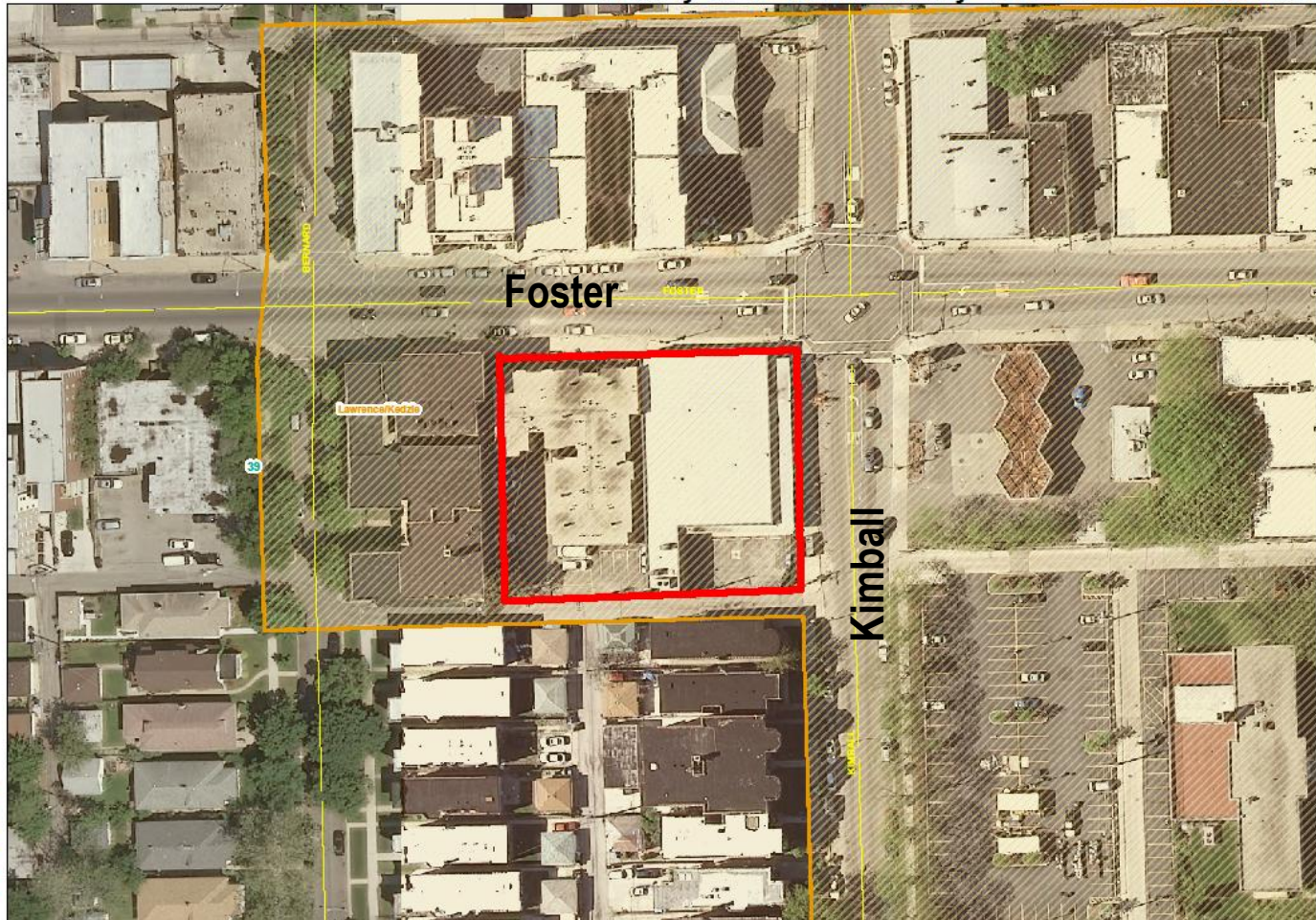


PUBLIC BUILDING COMMISSION OF CHICAGO

Albany Park Branch Library



Albany Park Branch Library - SWC Foster and Kimball



Project Site



TIF District

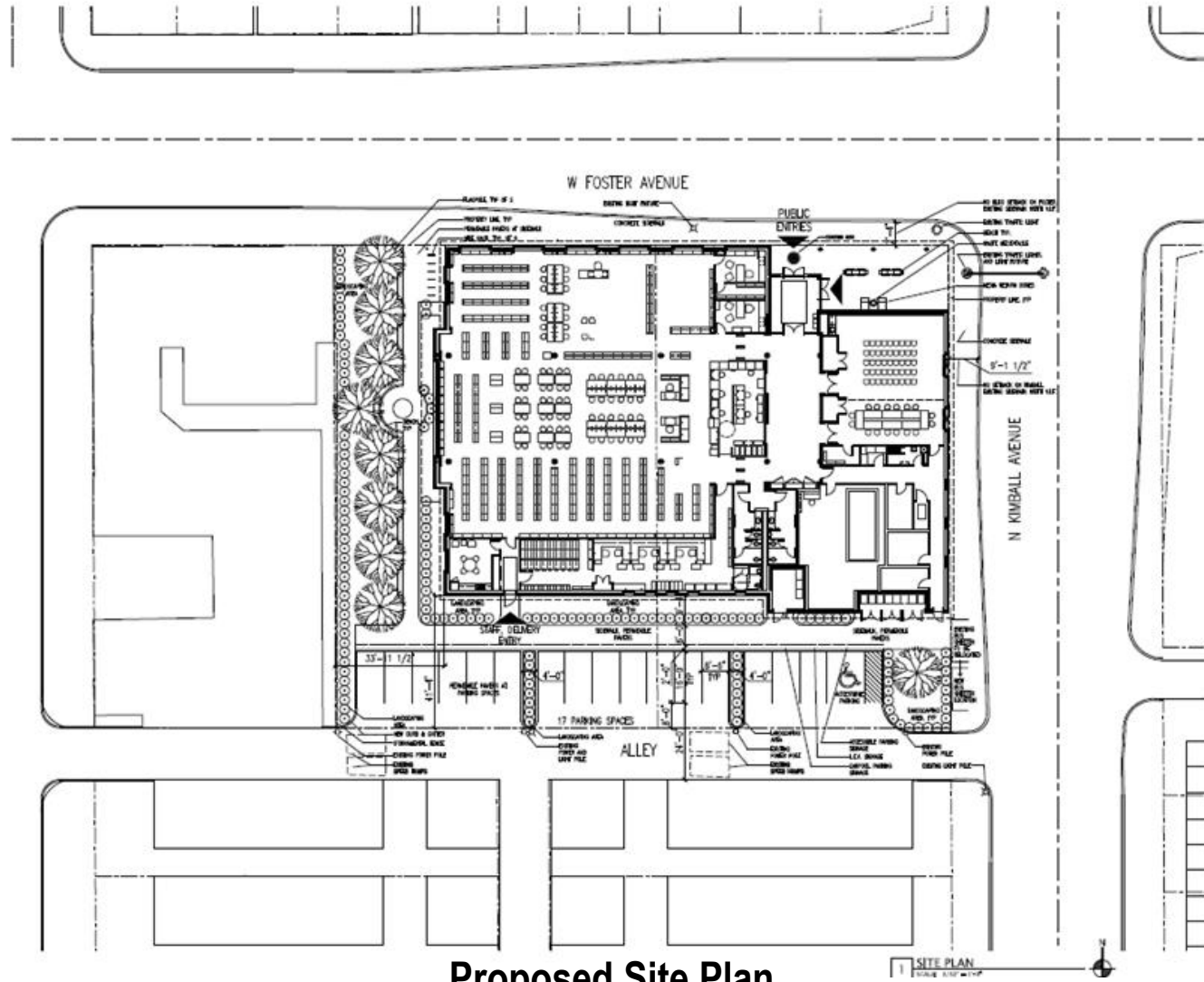


Ward



PUBLIC BUILDING COMMISSION OF CHICAGO

Albany Park Branch Library



Proposed Site Plan

PUBLIC BUILDING COMMISSION OF CHICAGO

Albany Park Branch Library



Draft Floor Plan – In Development



Chicago
Public
Library



PUBLIC BUILDING COMMISSION OF CHICAGO

Albany Park Branch Library

Environmental Sustainability

- Diversion of construction waste from landfills
- Utilization of durable and recycled materials in construction
- Reflective and green roofs
- Light sensors and daylight harvesting
- Solar-powered features
- High efficiency heating and cooling systems
- Low flow/low consumption water usage
- Native and adaptive landscape species
- Aggressive stormwater management



Chicago
Public
Library



PUBLIC BUILDING COMMISSION OF CHICAGO

Albany Park Branch Library

Economic Sustainability

- Programs Include:
 - Bid incentives for the employment of apprentices
 - Bid incentives for the employment of minority and female workers
 - Contract provisions that require at least 50% of the labor force be residents of the City of Chicago
 - Contract provisions with regard for community hiring, helping to employ those closest to the work at hand
 - Contract provisions that require minority- and women-owned business participation
 - Contract provisions for local business participation



Chicago
Public
Library



PUBLIC BUILDING COMMISSION OF CHICAGO

Albany Park Branch Library

PROJECT DEVELOPMENT SCHEDULE:

Fall 2012	Existing Library Closes
Fall 2012	Demolition & Site Preparation
Spring 2013	New Library Design Bid to Contractors
Spring 2013	New Library Construction Starts
Summer 2014	New Library Opens



Chicago
Public
Library



PUBLIC BUILDING COMMISSION OF CHICAGO
Albany Park Branch Library

CPL PRESENTATION ON INTERIM & NEW LIBRARY SERVICES

BRIAN BANNON
COMMISSIONER, CHICAGO PUBLIC LIBRARY



Chicago
Public
Library



PUBLIC BUILDING COMMISSION OF CHICAGO

Albany Park Branch Library

LIBRARY SERVICES

- Early Literacy Programs for babies & toddlers
- Children's programs: Summer Reading Program, story times, thematic programs, craft & holiday celebrations
- Teacher In Library after school homework help
- CyberNavigator computer literacy assistance
- Teen reading and technology programs
- Adult programs: book discussions, literary events, cultural programs of community interest
- Financial literacy programs for adults and teens



Chicago
Public
Library



PUBLIC BUILDING COMMISSION OF CHICAGO

Albany Park Branch Library

LIBRARY SERVICES DURING ALBANY PARK CLOSURE

- Full services at nearby Chicago Public Library branch libraries
(at least four within 2 miles of current location, and including:
internet access, wi-fi, and a Teacher –in-the-Library for homework help)
- Programming at nearby branches and community centers
- Holds pickup at nearby branches and the bookmobile
- Public Access to Northeastern Illinois University Library
- Albany Park's Teacher-in-the-Library at a nearby community site
- Korean language collections at Budlong Woods, Sulzer, and HWLC



Chicago
Public
Library



PUBLIC BUILDING COMMISSION OF CHICAGO

Albany Park Branch Library





Chicago
Public
Library



PUBLIC BUILDING COMMISSION OF CHICAGO

Albany Park Branch Library

QUESTION & ANSWER