

SUSTAINABILITY STRATEGY

4<sup>th</sup> Ward Yard  
4352 S. Cottage Grove Avenue



Available  
Goal  
**SUSTAINABLE SITES**

- Y R Erosion & Sedimentation Control
- 1 1 Site Selection
- X 1 Development Density
- 1 1 Brownfield Redevelopment
- 1 1 Alternative Transportation, Public Transportation Access
- X 1 Alternative Transportation, Bicycle Storage & Changing Rooms
- 1 1 Alternative Transportation, Alternative Fuel Vehicles
- X 1 Alternative Transportation, Parking Capacity / Carpooling
- X 1 Reduce Site Disturbance, Protect or Restore Open Space
- X 1 Reduce Site Disturbance, Development Footprint
- 1 1 Stormwater Management, Rate and Quantity
- 1 1 Stormwater Management, Treatment
- 1 1 Landscape & Exterior Design to Reduce Heat Islands, Non-Roof
- 1 1 Landscape & Exterior Design to Reduce Heat Islands, Roof
- X 1 Light Pollution Reduction

SUBTOTAL: 8 of 14 possible



Available  
Goal  
**WATER EFFICIENCY**

- 1 1 Water Efficient Landscaping, Reduce potable water use by 50%
- 1 1 Water Efficient Landscaping, No Potable Use or No Irrigation
- X 1 Innovative Wastewater Technologies
- X 1 Water Use Reduction, 20% Reduction
- X 1 Water Use Reduction 30% Reduction

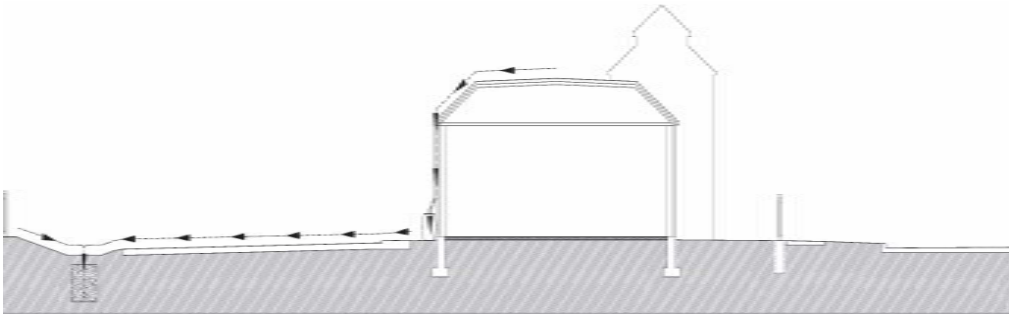
SUBTOTAL: 2 of 5 possible



Available  
Goal  
**ENERGY & ATMOSPHERE**

- Y R Fundamental Building Systems Commissioning
- Y R Minimum Energy Performance
- Y R CFC Reduction in HVAC&R Equipment
- 2 10 Optimize Energy Performance
- X 1 Renewable Energy, 5%
- X 1 Renewable Energy, 10%
- X 1 Renewable Energy, 20%
- 1 1 Additional Commissioning
- 1 1 Ozone Depletion
- X 1 Measurement & Verification
- 1 1 Green Power

SUBTOTAL: 5 of 17 possible



Available  
Goal  
**MATERIALS & RESOURCES**

- Y R Storage & Collection of Recyclables
- X 1 Building Reuse, Maintain 75% of Existing Shell
- X 1 Building Reuse, Maintain 100% of Existing Shell
- X 1 Building Reuse, Maintain 100% of existing shell & 50% non-shell
- 1 1 Construction Waste Management, Divert 50% from Disposal
- 1 1 Construction Waste Management, Divert 75% from Disposal
- X 1 Resource Reuse, 5%
- X 1 Resource Reuse, 10%
- 1 1 Recycled Content, 5% , (post-consumer + ½ post-industrial)
- 1 1 Recycled Content, 10% (post-consumer + ½ post-industrial)
- 1 1 Local/Regional Materials, 20% Manufactured Locally
- 1 1 Local/Regional Materials, of 20% Manufactured Locally, 50% Harvested Locally
- X 1 Rapidly Renewable Materials
- X 1 Certified Wood

SUBTOTAL: 6 of 13 possible

Available  
Goal  
**INDOOR ENVIRONMENTAL QUALITY**

- Y R Minimum IAQ Performance
- Y R Environmental Tobacco Smoke (ETS) Control
- 1 1 Carbon Dioxide (CO2) Monitoring
- X 1 Ventilation Effectiveness
- 1 1 Construction IAQ Management Plan, During Construction
- 1 1 Construction IAQ Management Plan, Before Occupancy
- 1 1 Low-Emitting Materials; p Adhesives & Sealants
- 1 1 Low-Emitting Materials; Paints & Coatings
- X 1 Low-Emitting Materials; Carpet
- 1 1 Low-Emitting Materials, Composite Wood & Agrifiber Products
- 1 1 Indoor Chemical & Pollutant Source Control
- X 1 Controllability of Systems, Perimeter
- X 1 Controllability of Systems, Non-Perimeter
- X 1 Thermal Comfort, ASHRAE 55-1992
- X 1 Thermal Comfort, Permanent Monitoring System
- 1 1 Daylight & Views, Daylight 75% of Spaces
- 1 1 Daylight & Views, Views for 90% of Spaces

SUBTOTAL: 9 of 15 possible

Available  
Goal  
**INNOVATION & DESIGN PROCESS**

- 1 1 Innovation in Design: Exemplary Stormwater Control;
- 1 1 Innovation in Design: Exemplary use of Local / Regional Materials
- 1 1 Innovation in Design: Green Cleaning.
- 1 1 Innovation in Design: 100% Green Power
- 1 1 LEED™ Accredited Professional

SUBTOTAL: 5 of 5 possible

Certified: 26-32 points, Silver: 33-38 points, Gold: 39-51 points, Platinum: 52-69 points



Muller + Muller, Ltd.  
700 N. Sangamon St.,  
Chicago, IL 60622  
Ph: (312) 432-4180

Project Phase: Occupied  
Target Rating: LEED NC 2.0/2.1 Silver  
Target Credits: 35  
Date of Registration: 6/4/03  
Date of Issue: 7/31/13