



# PUBLIC BUILDING COMMISSION OF CHICAGO

## EDGEBROOK ELEMENTARY SCHOOL ADDITION





# PUBLIC BUILDING COMMISSION OF CHICAGO

## EDGEBROOK ELEMENTARY SCHOOL ADDITION

---

WELCOME

JANICE KEPKA,  
*PRINCIPAL,*  
*EDGEBROOK ELEMENTARY SCHOOL*



# PUBLIC BUILDING COMMISSION OF CHICAGO

## EDGEBROOK ELEMENTARY SCHOOL ADDITION

---

## REMARKS

BRIAN G. DOHERTY,  
*41<sup>ST</sup> WARD ALDERMAN, CITY OF CHICAGO*



# PUBLIC BUILDING COMMISSION OF CHICAGO

## EDGEBROOK ELEMENTARY SCHOOL ADDITION

---

## AGENDA

### WELCOME

JANICE KEPKA, *PRINCIPAL, EDGEBROOK ELEMENTARY SCHOOL*

### REMARKS

BRIAN G. DOHERTY, *41<sup>ST</sup> WARD ALDERMAN, CITY OF CHICAGO*

### INTRODUCTIONS

JOSE ALVAREZ, *OFFICER, CPS*

### BUILDING DESIGN

LEONA KETTERL, *DEPUTY DIRECTOR FOR EDUCATION DESIGN, PBC*

### QUESTION AND ANSWER

BRIAN G. DOHERTY, *41<sup>ST</sup> WARD ALDERMAN, CITY OF CHICAGO*



# PUBLIC BUILDING COMMISSION OF CHICAGO

## EDGEBROOK ELEMENTARY SCHOOL ADDITION

---

# PBC PRESENTATION ON BUILDING DESIGN

LEONA KETTERL,  
*DEPUTY DIRECTOR FOR EDUCATION DESIGN, PBC*



# PUBLIC BUILDING COMMISSION OF CHICAGO

## EDGEBROOK ELEMENTARY SCHOOL ADDITION

Edgebrook School - 6525 N. Hiawatha



- Proposed Site 
- Target TIF Area 
- Ward Boundary 





# PUBLIC BUILDING COMMISSION OF CHICAGO

## EDGEBROOK ELEMENTARY SCHOOL ADDITION



# PUBLIC BUILDING COMMISSION OF CHICAGO

## EDGEBROOK ELEMENTARY SCHOOL ADDITION







# PUBLIC BUILDING COMMISSION OF CHICAGO

## EDGEBROOK ELEMENTARY SCHOOL ADDITION





# PUBLIC BUILDING COMMISSION OF CHICAGO

## EDGEBROOK ELEMENTARY SCHOOL ADDITION







# PUBLIC BUILDING COMMISSION OF CHICAGO

## EDGEBROOK ELEMENTARY SCHOOL ADDITION







# PUBLIC BUILDING COMMISSION OF CHICAGO

## EDGEBROOK ELEMENTARY SCHOOL ADDITION





# PUBLIC BUILDING COMMISSION OF CHICAGO

## EDGEBROOK ELEMENTARY SCHOOL ADDITION







# PUBLIC BUILDING COMMISSION OF CHICAGO

## EDGEBROOK ELEMENTARY SCHOOL ADDITION







# PUBLIC BUILDING COMMISSION OF CHICAGO

## EDGEBROOK ELEMENTARY SCHOOL ADDITION





# PUBLIC BUILDING COMMISSION OF CHICAGO

## EDGEBROOK ELEMENTARY SCHOOL ADDITION







# PUBLIC BUILDING COMMISSION OF CHICAGO

## EDGEBROOK ELEMENTARY SCHOOL ADDITION







# PUBLIC BUILDING COMMISSION OF CHICAGO

## EDGEBROOK ELEMENTARY SCHOOL ADDITION



©2004 James Steinkamp: Steinkamp/Ballogg Photography



©2004 James Steinkamp: Steinkamp/Ballogg Photography



# PUBLIC BUILDING COMMISSION OF CHICAGO

## EDGEBROOK ELEMENTARY SCHOOL ADDITION





# PUBLIC BUILDING COMMISSION OF CHICAGO

## EDGEBROOK ELEMENTARY SCHOOL ADDITION

### PROJECT PROGRAM:

#### Existing Building:

- 26,800 SF
- 13 Classrooms
- Library
- Gymnasium
- Administrative Suite

#### New Addition:

- 35,500 SF
- 9 Classrooms
- 1 Science Lab
- Kitchen and Dining Facility

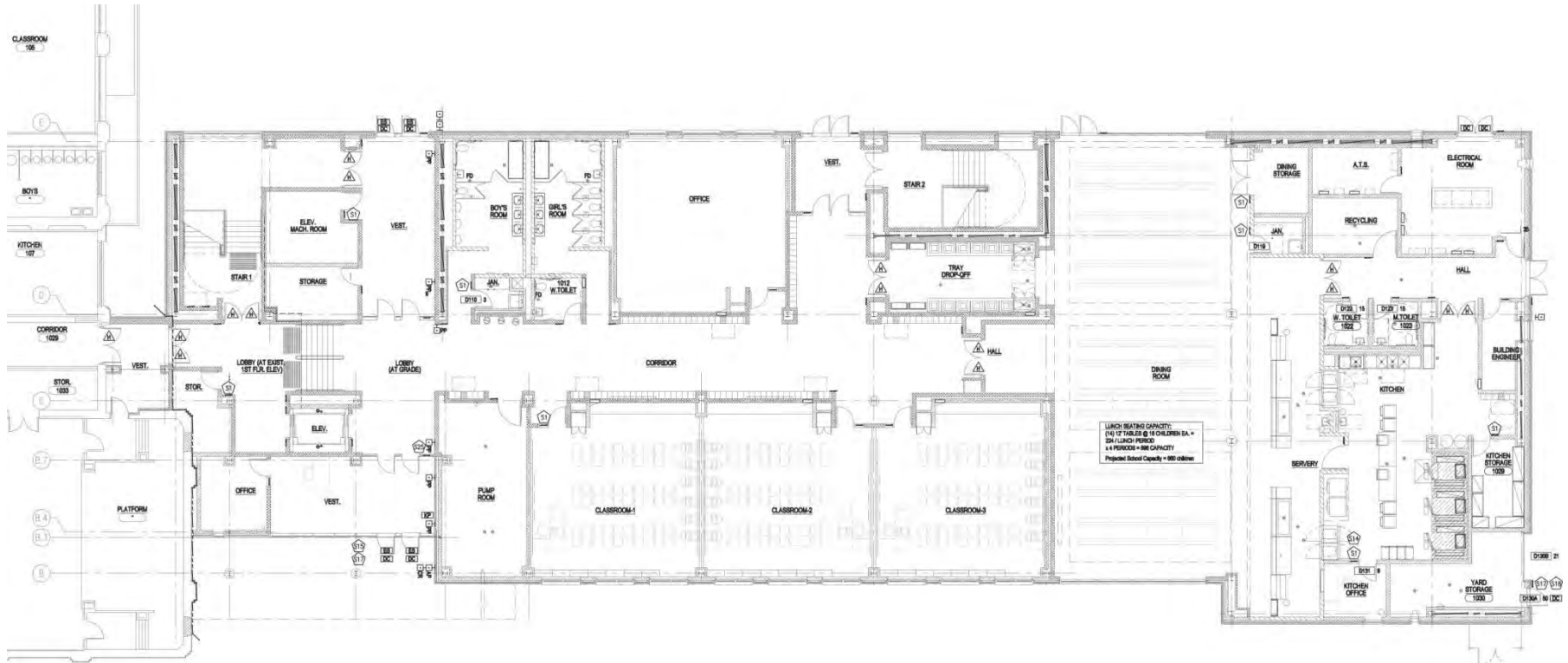
#### Exterior Amenities:

- Playlot
- Partial Green & Reflective Roof
- Reconstruction of Existing Ball Diamond



# PUBLIC BUILDING COMMISSION OF CHICAGO

## EDGEBROOK ELEMENTARY SCHOOL ADDITION



FIRST FLOOR

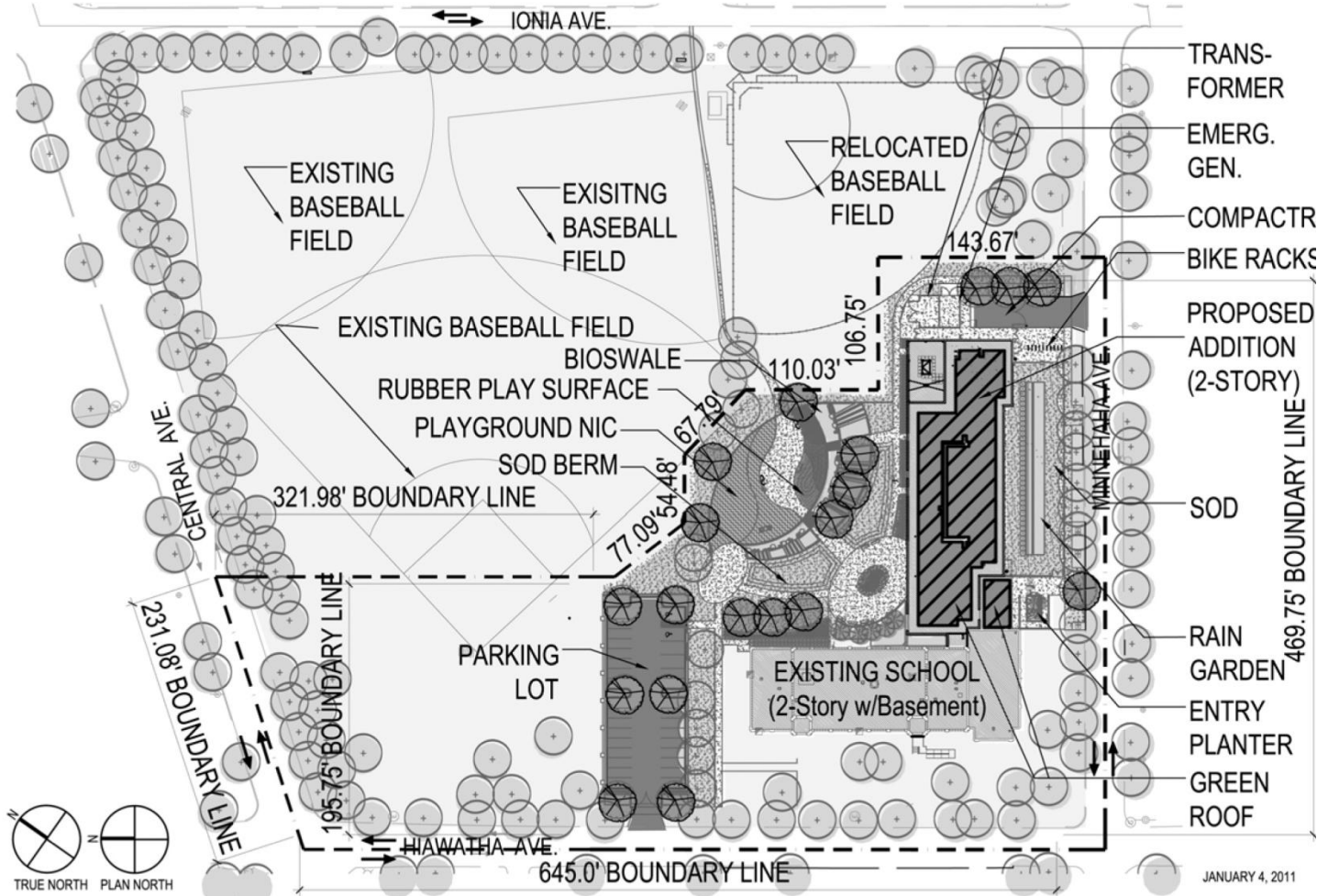






# PUBLIC BUILDING COMMISSION OF CHICAGO

## EDGEBROOK ELEMENTARY SCHOOL ADDITION



LANDSCAPE PLAN

# PUBLIC BUILDING COMMISSION OF CHICAGO

## EDGEBROOK ELEMENTARY SCHOOL ADDITION



PLAYLOT PERSPECTIVE



# PUBLIC BUILDING COMMISSION OF CHICAGO

## EDGEBROOK ELEMENTARY SCHOOL ADDITION

### PROJECT DEVELOPMENT SCHEDULE:

FEBRUARY-JULY 2009	PLANNING
AUGUST 2009-MARCH 2011	TESTING, DESIGN DEVELOPMENT & CONSTRUCTION DOCUMENTS
OCTOBER-DECEMBER 2010	CPS & CPD APPROVAL OF LAND TRANSFER
JANUARY 2011	COMMUNITY MEETING
FEBRUARY/MARCH 2011	CHICAGO PLAN COMMISSION/COMMITTEE ON ZONING (TENTATIVE)
MARCH 2011	REQUEST TO CPS FOR AUTHORITY TO BID
3 MONTH DURATION	PROCUREMENT PROCESS & AWARD RECOMMENDATION FOR PBC BOARD APPROVAL
13 MONTH DURATION	CONSTRUCTION BY PBC & FURNITURE, FIXTURES & EQUIPMENT BY CPS
Fall 2012	TARGET OPENING





# PUBLIC BUILDING COMMISSION OF CHICAGO

## EDGEBROOK ELEMENTARY SCHOOL ADDITION

## Commitment to Sustainable Development for the Environment

- Diversion of construction waste from landfills
- Utilization of durable and recycled materials in construction
- Reflective and green roofs
- Light sensors and daylight harvesting
- Solar-powered features
- High efficiency heating and cooling systems
- Low flow/low consumption water usage
- Native and adaptive landscape species
- Aggressive stormwater management



# PUBLIC BUILDING COMMISSION OF CHICAGO

## EDGEBROOK ELEMENTARY SCHOOL ADDITION

## Commitment to Economic Sustainability Programs for the Community

- Programs Include:
  - Bid incentives for the employment of apprentices
  - Bid incentives for the employment of minority and female workers
  - Contract provisions that require at least 50% of the labor force be residents of the City of Chicago
  - Contract provisions with regard for community hiring, helping to employ those closest to the work at hand
  - Contract provisions that require minority- and women-owned business participation
  - Contract provisions for local business participation



# PUBLIC BUILDING COMMISSION OF CHICAGO

## EDGEBROOK ELEMENTARY SCHOOL ADDITION



# QUESTION & ANSWER