

# EXHIBIT M – TEST PIT INVESTIGATION REPORT

---



December 26, 2018

Mr. Richard Schleyer  
Public Building Commission of Chicago  
Richard J. Daley Center, Room 200  
50 West Washington Street  
Chicago, Illinois 60602

**Re: Test Pit Investigation  
Proposed Engine Company 115 – Site B  
Northwest Corner of W. 119<sup>th</sup> St. & S. Morgan St.  
Chicago, Illinois 60643**

Dear Mr. Schleyer:

Carnow, Conibear, and Associates, Ltd. (Carnow Conibear) contracted Tecnica Environmental Services, Inc. (Tecnica) to perform a test pit investigation at the proposed Engine Company 115 – Site B (Site) at the northwest corner of W. 119<sup>th</sup> St. and S. Morgan St. in Chicago, Illinois. The Site consists of an abandoned asphalt parking lot and is approximately 4.0 acres in size.

Previously, the Public Building Commission of Chicago (PBCC) retained Carnow Conibear to conduct Ground Penetrating Radar (GPR) and Electromagnetic Induction (EMI) surveys to identify any anomalies buried at the Site which could be indicative of concrete building foundations, underground storage tanks (USTs), or other metallic objects of environmental concern. Carnow Conibear worked with Ground Penetrating Radar Systems, Inc. (GPRS) to conduct the GPR and EMI surveys on November 2, 2018 and November 6, 2018. The GPR and EMI results indicated multiple anomalies that would be consistent for possible soil change, previous excavations or other debris such as brick or concrete spread throughout the parking lot area. The GPR and EMI survey results are presented in a separate Ground Penetrating Radar & Electromagnetic Induction Survey report dated December 7, 2018. The GPR and EMI anomaly locations are shown in attached **Exhibit I**.

Test pits were advanced on November, 19<sup>th</sup> and 20<sup>th</sup>, 2018 by Tecnica under the direction of Karen Zelzer and Chad Adams P.G. of Carnow Conibear. Two anomaly areas were located by GPRS during the GPR survey. These anomalies were located near the center east and west boundaries of the Site. These two areas were investigated by Test Pits 10-14. Several anomalies were located by GPRS during the EMI phase of the survey. These anomalies were divided into a southern zone, Test Pits 1-9, and a northern zone, Test Pits 15-31. In each test pit area an excavation was advanced by an excavator, approximately five to five and a half feet in depth and at determined length and width for each anomaly area.

A depiction of the location of the test pits and findings can be viewed in attached **Exhibit I. Attachment A** provides photographs from the Site investigation. The following is a brief description of the findings for each test pit area:

Test Pit	Anomaly	Size	GPS Location*	Observations
1	Southern EMI Zone	3.5' East-West 15' North-South ~5' depth	41 40.679 N -87 38.872 W 41 40.682 N -87 38.871 W	Approximately 6" asphalt underlain with black silty CLAY with light brown SAND at 3.5'. Large metal post support encountered at 2.5'. No noticeable odors.
2	Southern EMI Zone	3.5' East-West 15' North-South ~5' depth	41 40.685 N -87 38.866 W 41 40.683 N -87 38.869 W	Approximately 6" asphalt underlain with black silty CLAY with light brown SAND at 3.5'. No anomalies encountered. No noticeable odors.
3	Southern EMI Zone	3.5' East-West 15' North-South ~5' depth	41 40.677 N -87 38.845 W 41 40.674 N -87 38.849 W	Approximately 6" asphalt underlain with black silty CLAY with light brown SAND at 3.5'. No anomalies encountered. No noticeable odors.
4	Southern EMI Zone	3.5' East-West 15' North-South ~5.5' depth	41 40.676 N -87 38.810 W 41 40.679 N -87 38.815 W	Approximately 6" asphalt underlain with black silty CLAY with light brown SAND at 3.5'. Brick fragments encountered at 2'. No noticeable odors.
5	Southern EMI Zone	3.5' East-West 15' North-South ~5.5' depth	41 40.691 N -87 38.870 W 41 40.695 N -87 38.869 W	Approximately 6" asphalt underlain with black silty CLAY with light brown SAND at 3.5'. Relic utility line exposed at 1'. Broken foundation/brick fragments at 2'. No noticeable odors.
6	Southern EMI Zone	3.5' East-West 15' North-South ~5' depth	41 40.699 N -87 38.871 W 41 40.701 N -87 38.871 W	Approximately 6" asphalt underlain with black silty CLAY with light brown SAND at 3.5'. Broken foundation/brick fragments at 2'. No noticeable odors.
7	Southern EMI Zone	3.5' East-West 20' North-South ~5' depth	41 40.713 N -87 38.849 W 41 40.706 N -87 38.850 W	Approximately 6" asphalt underlain with black silty CLAY with light brown SAND at 3.5'. Broken foundation/brick fragments at 2'. No noticeable odors.
8	Southern EMI Zone	3.5' East-West 15' North-South ~5' depth	41 40.722 N -87 38.873 W 41 40.713 N -87 38.873 W	Approximately 6" asphalt underlain with black silty CLAY with light brown SAND at 3.5'. No anomalies encountered. No noticeable odors.
9	Southern EMI Zone	3.5' East-West 15' North-South ~5' depth	41 40.712 N -87 38.878 W 41 40.714 N -87 38.852 W	Approximately 6" asphalt underlain with black silty CLAY with light brown SAND at 3'. Broken foundation material and storm drain found at 3'. No noticeable odors.

10	GPR East Zone	3.5' East-West 15' North-South ~5' depth	41 40.717 N -87 38.837 W 41 40.720 N -87 38.836 W	Approximately 6" asphalt underlain with black silty CLAY with light brown SAND at 3'. Broken blue stained concrete at 2'. No noticeable odors.
11	GPR East Zone	3.5' East-West 20' North-South ~5' depth	41 40.720 N -87 38.832 W 41 40.723 N -87 38.824 W	Approximately 6" asphalt underlain with black silty CLAY with light brown SAND at 3'. Broken blue stained concrete at 2'. No noticeable odors.
12	GPR East Zone	3.5' East-West 30' North-South ~5' depth	41 40.724 N -87 38.823 W 41 40.723 N -87 38.818 W	Approximately 6" asphalt underlain with black silty CLAY with light brown SAND at 3'. Broken brick at 2'. No noticeable odors.
13	GPR West Zone	3.5' East-West 40' North-South ~5.5' depth	41 40.732 N -87 38.875 W 41 40.834 N -87 38.862 W	Approximately 6" asphalt underlain with black silty CLAY with light brown SAND at 3'. Wood flooring and brick debris at 2-3, with perched water'. 6-9" metal pipe (possible relic water main) running perpendicular to trench at north end. No noticeable odors.
14	GPR West Zone	3.5' East-West 40' North-South ~5.5' depth	41 40.726 N -87 38.871 W 41.40.742 N -87 38.871 W	Approximately 6" asphalt underlain with black silty CLAY with light brown SAND at 3'. Brick foundation at 2-3' with perched water. No noticeable odors.
15	Northern EMI Zone	3.5' East-West 20' North-South ~5' depth	41 40.740 N -87 38.827 W 41 40.743N -87 38.828 W	Approximately 6" asphalt underlain with black silty CLAY with light brown SAND at 3'. Broken brick at 2'. No noticeable odors.
16	Northern EMI Zone	3.5' East-West 15' North-South ~5' depth	41 40.758 N -87 38.862 W 41 40.771 N -87 38.864 W	Approximately 6" asphalt underlain with black silty CLAY with light brown SAND at 3'. No anomalies encountered. No noticeable odors.
17	Northern EMI Zone	3.5' East-West 15' North-South ~5' depth	41 40.746 N -87 38.856 W 41 40.746 N -87 38.859 W	Approximately 6" asphalt underlain with black silty CLAY with light brown SAND at 3'. No anomalies encountered. No noticeable odors.
18	Northern EMI Zone	3.5' East-West 15' North-South ~5.5' depth	41 40.748 N -87 38.872 W 41 40.749 N -87 38.874 W	Approximately 6" asphalt underlain with black silty CLAY with light brown SAND at 3'. No anomalies encountered. Red sandy layer at 2' on north end. No noticeable odors.

19	Northern EMI Zone	3.5' East-West 15' North-South ~5.5' deep	41 40.750 N -87 38.869 W 41 40.751 N -87 38.867 W	Approximately 6" asphalt underlain with black silty CLAY with light brown SAND at 3'. No anomalies encountered. Red sandy layer at 2' at north end. No noticeable odors.
20	Northern EMI Zone	3.5' East-West 20' North-South ~5.5' deep	41 40.760 N -87 38.873 W 41 40.761 N -87 38.875 W	Approximately 6" asphalt underlain with black silty CLAY with light brown SAND at 3'. No anomalies encountered. Red sandy layer at 2' at south end. No noticeable odors.
21	Northern EMI Zone	3.5' East-West 20' North-South ~5.5' deep	41 40.750 N -87 38.870 W 41 40.756 N -87 38.868 W	Approximately 6" asphalt underlain with black silty CLAY with light brown SAND at 3'. Red sandy layer and some bricks at 2' at south end. No noticeable odors.
22	Northern EMI Zone	3.5' East-West 17.5' North-South ~5.5' deep	41 40.752 N -87 38.860 W 41 40.753 N -87 38.860 W	Approximately 6" asphalt underlain with black silty CLAY with light brown SAND at 3'. Loose metal pipe at ~2'. Red sandy layer at 2' at south end. No noticeable odors.
23	Northern EMI Zone	3.5' East-West 25' North-South ~5.5' deep	41 40.756 N -87 38.850 W 41 40.756 N -87 38.846 W	Approximately 6" asphalt underlain with black silty CLAY with light brown SAND at 3'. Concrete wall footing at south end. 1' wide, 18' bgs. 3.5' depth with base at ~5 bgs. No noticeable odors.
24	Northern EMI Zone	3.5' East-West 35' North-South ~5' deep	41 40.759 N -87 38.841 W 41.40.759 N -87 38.840 W	Approximately 6" asphalt underlain with black silty CLAY with light brown SAND at 3'. No anomalies encountered. Red sandy layer at 2' at south end. No noticeable odors.
25	Northern EMI Zone	3.5' East-West 15' North-South ~5.5' deep	41 40.761 N -87 38.832 W 41 40.761 N -87 38.835 W	Approximately 6" asphalt underlain with black silty CLAY with light brown SAND at 3'. Loose foundation pier at north end. Top of pier is ~2 bgs; pier is 12x12", approximately 3' south of north end. No noticeable odors.
26	Northern EMI Zone	3.5' East-West 30' North-South ~5' deep	41 40.760 N -87 38.863 W 41 40.766 N -87 38.862 W	Approximately 6" asphalt underlain with black silty CLAY with light brown SAND at 3'. Concrete wall footing at north end. 1' wide, 18' bgs. 3.5' depth with base at ~5 bgs. No noticeable odors.
27	Northern EMI Zone	3.5' East-West 15' North-South ~5' deep	41 40.761 N -87 38.854 W 41 40.766 N -87 38.849 W	Approximately 6" asphalt underlain with black silty CLAY with light brown SAND at 3'. No anomalies encountered. Red sandy layer at 2' at south end. No noticeable odors.

28	Northern EMI Zone	3.5' East-West 20' North-South ~5' deep	41 40.764 N -87 38.844 W 41 40.765 N -87 38.844 W	Approximately 6" asphalt underlain with black silty CLAY with light brown SAND at 3'. Concrete wall footing at north end. 1' wide, 18' bgs. 3.5' depth with base at ~5 bgs. Foundation pier at south end. Top of pier is ~2 bgs; pier is 12x12", approximately 2' north of south end. No noticeable odors.
29	Northern EMI Zone	3.5' East-West 20' North-South ~5' deep	41 40.767 N -87 38.844 W 41 40.767 N -87 38.843 W	Approximately 6" asphalt underlain with black silty CLAY with light brown SAND at 3'. Concrete wall footing at north end. 1' wide, 18' bgs. 3.5' depth with base at ~5 bgs. No noticeable odors.
30	Northern EMI Zone	3.5' East-West 15' North-South ~5' deep	41 40.762 N -87 38.831 W 41 40.766 N -87 38.829 W	Approximately 6" asphalt underlain with black silty CLAY with light brown SAND at 3'. Concrete wall footing at north end. 1' wide, 18' bgs. 3.5' depth with base at ~5 bgs. 6" drainage pipe south of foot wall approximately 2' bgs. Relic utility wire at south end approximately 2' bgs. No noticeable odors.
31	Northern EMI Zone	3.5' East-West 20' North-South ~5.5' deep	41 40.764 N -87 38.824 W 41 40.770 N -87 38.827 W	Approximately 6" asphalt underlain with black silty CLAY with light brown SAND at 3'. Concrete wall footing at south end. 1' wide, 18' bgs. 3.5' depth with base at ~5 bgs. No noticeable odors.
22A	Northern EMI Zone	3.5' East-West 3.5' North-South ~2' deep	41 40.754 N -87 38.864 W	Approximately 6" asphalt underlain with black silty CLAY with light brown SAND at 3'. Concrete wall footing located. No noticeable odors.
22B	Northern EMI Zone	3.5' East-West 3.5' North-South ~2' deep	41 40.752 N -87 38.873 W	Approximately 6" asphalt underlain with black silty CLAY with light brown SAND at 3'. Southwest corner concrete wall footing located. No noticeable odors.

\* Each GPS location obtained utilizing an Apple smart phone application program. Margin of error +/- 6m.

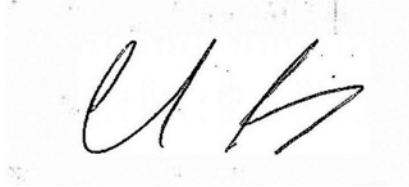
At the conclusion of test pit work, each excavation area was backfilled with excavated soil and compacted with excavator.

If you have any questions regarding this test pit investigation, please feel free to contact Nohemi Melero at (312) 762-2927.



Sincerely,

**CARNOW, CONIBEAR & ASSOC., LTD.**



Chad Adams P.G.  
Licensed Professional Geologist



Nohemi Melero  
Senior Project Manager

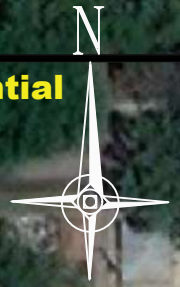
Attachments:

**Exhibit I – Test Pit Location Map**

**Attachment A: Site Photographs**

**Exhibit I**  
**Test Pit Location Map**

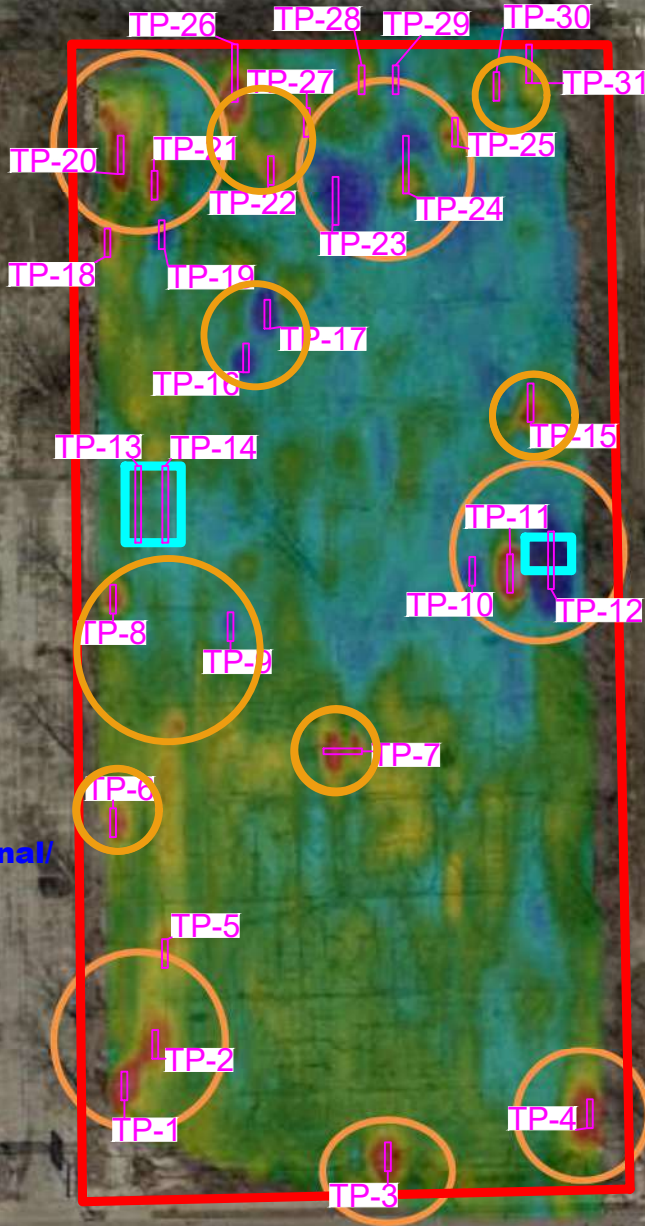
**WIRA Study  
Areas 1, 2,  
4 SRP Site**



**Residential**

**Residential**

W. 118th St.



**Axletech  
International/  
US Gear  
Corp/  
Heat  
Treat  
Corp.**

S. Morgan St.

**Residential**


**Commercial**

W. 119th St.

**Ingersoll Products  
SEMS Site**

**Vacant**

**LEGEND**

-  Site Boundary
-  EMI Anomaly
-  GPR Anomaly
-  Test Pit Location

Date: December 2018  
Scale: 1"= 100'  
Drawn by: NM  
Checked by: DSB

**Exhibit I: Test Pit Location Map**  
Proposed Engine Company 115 - Site B  
Northwest Corner of W. 119th St. & S. Morgan St.  
Chicago, Illinois 60643

*Your Environmental Resource*

T:\PBCC\FIRE STATIONS\Engine 115 Fire Station\Phase I ESA\  
Site B\Draw\Exhibits.dwg

Carnow, Conibear & Assoc., Ltd.  
Environmental Consulting Services  
600 W. Van Buren St., Suite 500, Chicago, IL 60607  
t: 312.782.4486 f: 312.782.5145  
www.ccaltd.com

**CARNOW  
CONIBEAR**

**Attachment A  
Site Photographs**



1: TP-1, view east

2: TP-1, obstruction



3: TP-2, view east

4: TP-3, view east

Photo Date: November 2018  
Created by: JL, CA  
Checked by: NM  
Page 1 of 10

**APPENDIX B: Test Pit Photographs**  
Proposed Engine 115 Fire Station - Site B  
W. 119 St. & S. Morgan St.  
Chicago, Illinois 60643

*Your Environmental Resource*

T:\PBCC\FIRE STATIONS\Engine 115 Fire Station\Test  
Pits\PhotoAppx.dwg

Carnow, Conibear & Assoc., Ltd.  
Environmental Consulting Services  
600 W. Van Buren St., Suite 500, Chicago, IL 60607  
t: 312.782.4486 f: 312.782.5145  
www.ccaltd.com

**CARNOW  
CONIBEAR**



5: TP-4, view east

6: TP-5, with abandoned utility wire, view east



7: TP-6, view east

8: TP-7, view east

Photo Date: November 2018  
 Created by: JL, CA  
 Checked by: NM  
 Page 2 of 10

**APPENDIX B: Test Pit Photographs**  
 Proposed Engine 115 Fire Station - Site B  
 W. 119 St. & S. Morgan St.  
 Chicago, Illinois 60643

*Your Environmental Resource*

T: \PBCC\FIRE STATIONS\Engine 115 Fire Station\Test  
 Pits\PhotoAppx.dwg

Carnow, Conibear & Assoc., Ltd.  
 Environmental Consulting Services  
 600 W. Van Buren St., Suite 500, Chicago, IL 60607  
 t: 312.782.4486 f: 312.782.5145  
 www.ccaltd.com





9: TP-8, view east



10: TP-9, view east



11: TP-10, view east



12: TP-10, stained concrete rubble

Photo Date: November 2018  
 Created by: JL, CA  
 Checked by: NM  
 Page 3 of 10

**APPENDIX B: Test Pit Photographs**  
 Proposed Engine 115 Fire Station - Site B  
 W. 119 St. & S. Morgan St.  
 Chicago, Illinois 60643

*Your Environmental Resource*

T:\PBCC\FIRE STATIONS\Engine 115 Fire Station\Test  
 Pits\PhotoAppx.dwg

Carnow, Conibear & Assoc., Ltd.  
 Environmental Consulting Services  
 600 W. Van Buren St., Suite 500, Chicago, IL 60607  
 t: 312.782.4486 f: 312.782.5145  
 www.ccaltd.com

**CARNOW  
 CONIBEAR**



13: TP-11, view east



14: TP-12, view east



15: TP-13, building debris



16: TP-13, probable abandoned water main, view north

Photo Date: November 2018  
 Created by: JL, CA  
 Checked by: NM  
 Page 4 of 10

**APPENDIX B: Test Pit Photographs**  
 Proposed Engine 115 Fire Station - Site B  
 W. 119 St. & S. Morgan St.  
 Chicago, Illinois 60643

*Your Environmental Resource*

T: \PBCC\FIRE STATIONS\Engine 115 Fire Station\Test  
 Pits\PhotoAppx.dwg

Carnow, Conibear & Assoc., Ltd.  
 Environmental Consulting Services  
 600 W. Van Buren St., Suite 500, Chicago, IL 60607  
 t: 312.782.4486 f: 312.782.5145  
 www.ccaltd.com

**CARNOW  
 CONIBEAR**



**17: TP-14, view west**

**18: TP-15, view east**



**19: TP-16, view east**

**20: TP-17, view east**

Photo Date: November 2018  
 Created by: JL, CA  
 Checked by: NM  
 Page 5 of 10

**APPENDIX B: Test Pit Photographs**  
 Proposed Engine 115 Fire Station - Site B  
 W. 119 St. & S. Morgan St.  
 Chicago, Illinois 60643

*Your Environmental Resource*

T: \PBCC\FIRE STATIONS\Engine 115 Fire Station\Test  
 Pits\PhotoAppx.dwg

Carnow, Conibear & Assoc., Ltd.  
 Environmental Consulting Services  
 600 W. Van Buren St., Suite 500, Chicago, IL 60607  
 t: 312.782.4486 f: 312.782.5145  
 www.ccald.com

**CARNOW  
 CONIBEAR**



21: TP-18, view west



22: TP-19, view east



23: TP-20, view east



24: TP-21, view east

Photo Date: November 2018  
 Created by: JL, CA  
 Checked by: NM  
 Page 6 of 10

**APPENDIX B: Test Pit Photographs**  
 Proposed Engine 115 Fire Station - Site B  
 W. 119 St. & S. Morgan St.  
 Chicago, Illinois 60643

*Your Environmental Resource*

T:\PBCC\FIRE STATIONS\Engine 115 Fire Station\Test  
 Pits\PhotoAppx.dwg

Carnow, Conibear & Assoc., Ltd.  
 Environmental Consulting Services  
 600 W. Van Buren St., Suite 500, Chicago, IL 60607  
 t: 312.782.4486 f: 312.782.5145  
 www.ccaltd.com

**CARNOW  
 CONIBEAR**



25: TP-22, view west

26: TP-22, metal debris



27: TP-22A, wall footing, view west

28: TP-22B, corner wall footing, view east

Photo Date: November 2018  
 Created by: JL, CA  
 Checked by: NM  
 Page 7 of 10

**APPENDIX B: Test Pit Photographs**  
 Proposed Engine 115 Fire Station - Site B  
 W. 119 St. & S. Morgan St.  
 Chicago, Illinois 60643

*Your Environmental Resource*

T: \PBCC\FIRE STATIONS\Engine 115 Fire Station\Test  
 Pits\PhotoAppx.dwg

Carnow, Conibear & Assoc., Ltd.  
 Environmental Consulting Services  
 600 W. Van Buren St., Suite 500, Chicago, IL 60607  
 t: 312.782.4486 f: 312.782.5145  
 www.ccaltd.com

**CARNOW  
 CONIBEAR**



29: TP-23, wall footing, view west

30: TP-24, view east



31: TP-25, view east

32: TP-25, foundation pier

Photo Date: November 2018  
 Created by: JL, CA  
 Checked by: NM  
 Page 8 of 10

**APPENDIX B: Test Pit Photographs**  
 Proposed Engine 115 Fire Station - Site B  
 W. 119 St. & S. Morgan St.  
 Chicago, Illinois 60643

*Your Environmental Resource*

T: \PBCC\FIRE STATIONS\Engine 115 Fire Station\Test  
 Pits\PhotoAppx.dwg

Carnow, Conibear & Assoc., Ltd.  
 Environmental Consulting Services  
 600 W. Van Buren St., Suite 500, Chicago, IL 60607  
 t: 312.782.4486 f: 312.782.5145  
 www.ccaltd.com

**CARNOW  
 CONIBEAR**



33: TP-26, wall footing, view west

34: TP-27, view west



35: TP-28, foundation pier, view east

36: TP-28, foundation wall, view west

Photo Date: November 2018  
 Created by: JL, CA  
 Checked by: NM  
 Page 9 of 10

**APPENDIX B: Test Pit Photographs**  
 Proposed Engine 115 Fire Station - Site B  
 W. 119 St. & S. Morgan St.  
 Chicago, Illinois 60643

*Your Environmental Resource*

T:\PBCC\FIRE STATIONS\Engine 115 Fire Station\Test  
 Pits\PhotoAppx.dwg

Carnow, Conibear & Assoc., Ltd.  
 Environmental Consulting Services  
 600 W. Van Buren St., Suite 500, Chicago, IL 60607  
 t: 312.782.4486 f: 312.782.5145  
 www.ccaltd.com

**CARNOW  
 CONIBEAR**



**37: TP-29, wall footing, view east**



**38: TP-30, wall footing, view west**



**39: TP-31, wall footing, view east**

Photo Date: November 2018  
 Created by: JL, CA  
 Checked by: NM  
 Page 10 of 10

**APPENDIX B: Test Pit Photographs**  
 Proposed Engine 115 Fire Station - Site B  
 W. 119 St. & S. Morgan St.  
 Chicago, Illinois 60643

*Your Environmental Resource*

T:\PBCC\FIRE STATIONS\Engine 115 Fire Station\Test  
 Pits\PhotoAppx.dwg

Carnow, Conibear & Assoc., Ltd.  
 Environmental Consulting Services  
 600 W. Van Buren St., Suite 500, Chicago, IL 60607  
 t: 312.782.4486 f: 312.782.5145  
 www.ccaltd.com

**CARNOW  
 CONIBEAR**