



ADDENDUM

ADDENDUM NO.: 04
PROJECT NAME: Wendell Phillips Academy High School Annex
PROJECT NO.: 05395
CONTRACT NO.: C1600
DATE OF ISSUE: June 7, 2021

NOTICE OF CHANGES, MODIFICATIONS, OR CLARIFICATIONS TO CONTRACT DOCUMENTS

The following changes, modifications, or clarifications are hereby incorporated and made an integral part of the Contract Documents. Unless clearly expressed otherwise by this Addendum, all terms and conditions defined in the original Contract Documents shall continue in full force and effect and shall have the same meaning in this Addendum. Issued Addenda represent responses/clarifications to various inquiries. Contractors shall be responsible for including all associated labor/material costs in its bid. Drawings/specifications corresponding to inquiry responses will be issued with the Issue for Construction Documents, upon issuance of building permit.

ITEM NO. 1: CHANGE TO KEY DATES

None.

ITEM NO. 2: REVISIONS TO BOOK 1 – PBC INSTRUCTIONS TO BIDDERS

None.

ITEM NO. 3: REVISIONS TO BOOK 2 – PBC STANDARD TERMS AND CONDITIONS

None.

ITEM NO. 4: REVISIONS TO BOOK 3 – TECHNICAL SPECIFICATIONS

None.

ITEM NO. 5: REVISIONS TO DRAWINGS

Change 1 REVISED Drawing A561 Exterior Plan Details – Added detail 6.

ITEM NO. 6: REQUESTS FOR INFORMATION

RFI-1. (CORRECTION TO RESPONSE TO RFI #7, IN ADDENDUM NO. 3, ISSUED 6/4/2021)

Question: Drawing sheet A941 added by addendum #1, perspective 4, indicates that there is a wall mounted TV, noted as CFCl. If this TV is to be furnished and installed by the contractor, we will need a specification for the TV required.

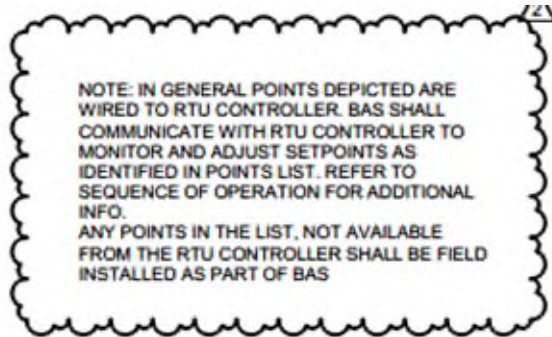
Response: The contractor is to provide and install the TV monitors specified and shown on Revised sheet A941 issued in Addendum #3. The contractor is also required to provide the power, data, mounting brackets and digital display control systems also specified and noted on revised sheet A941 and revised sheet E101 issued in Addendum #3.

RFI-2.

Question: Specification (23 09 26 – Section 3.3 and 3.4 and 23 74 16.13) calls for RTU's to be fully controlled by its own DDC controller. In response to the changes made in addendum 3 on drawing M702 (below screenshot). Are the designed RTUs able to meet the controls sequence of operations (Specification: 23 09 26) and points list (Drawing: M702)? If the units are not able to meet both, can you confirm that the RTU manufacturer will have the following:

Open Inputs and Outputs available on the RTU controllers for the missing points?

Programming/engineering time to integrate the missing points and adjust the sequence of operations to meet CPS SOO (23 09 26)?

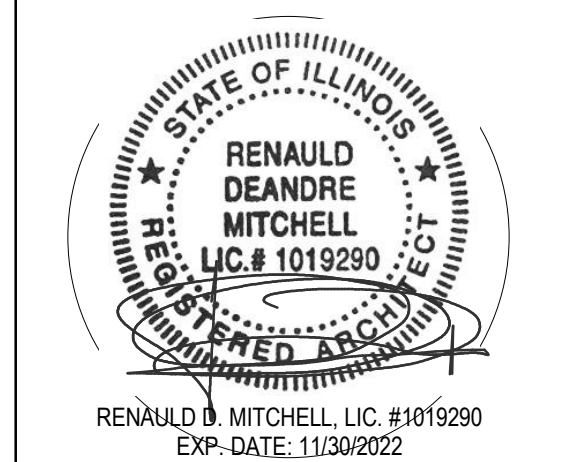
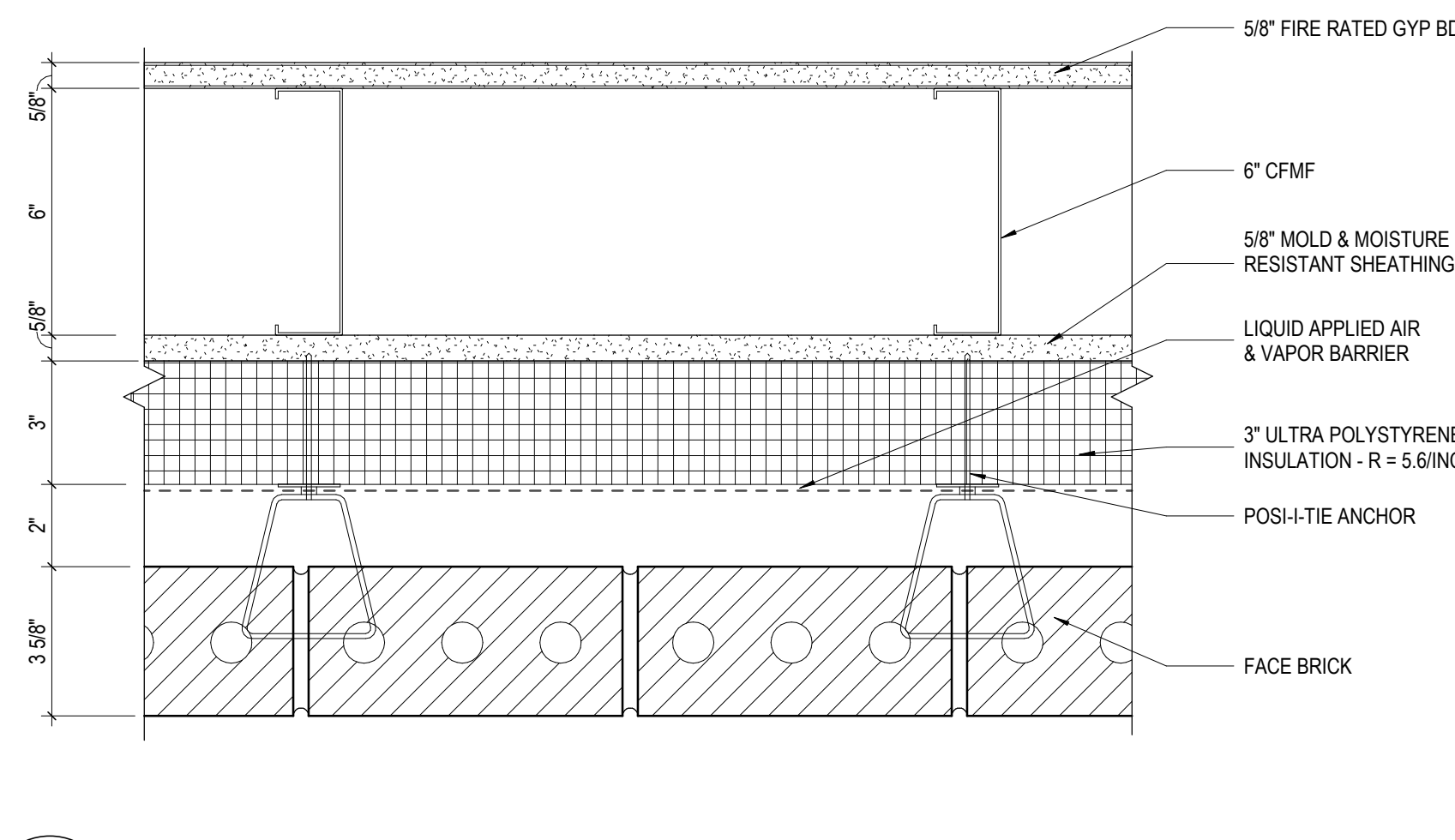
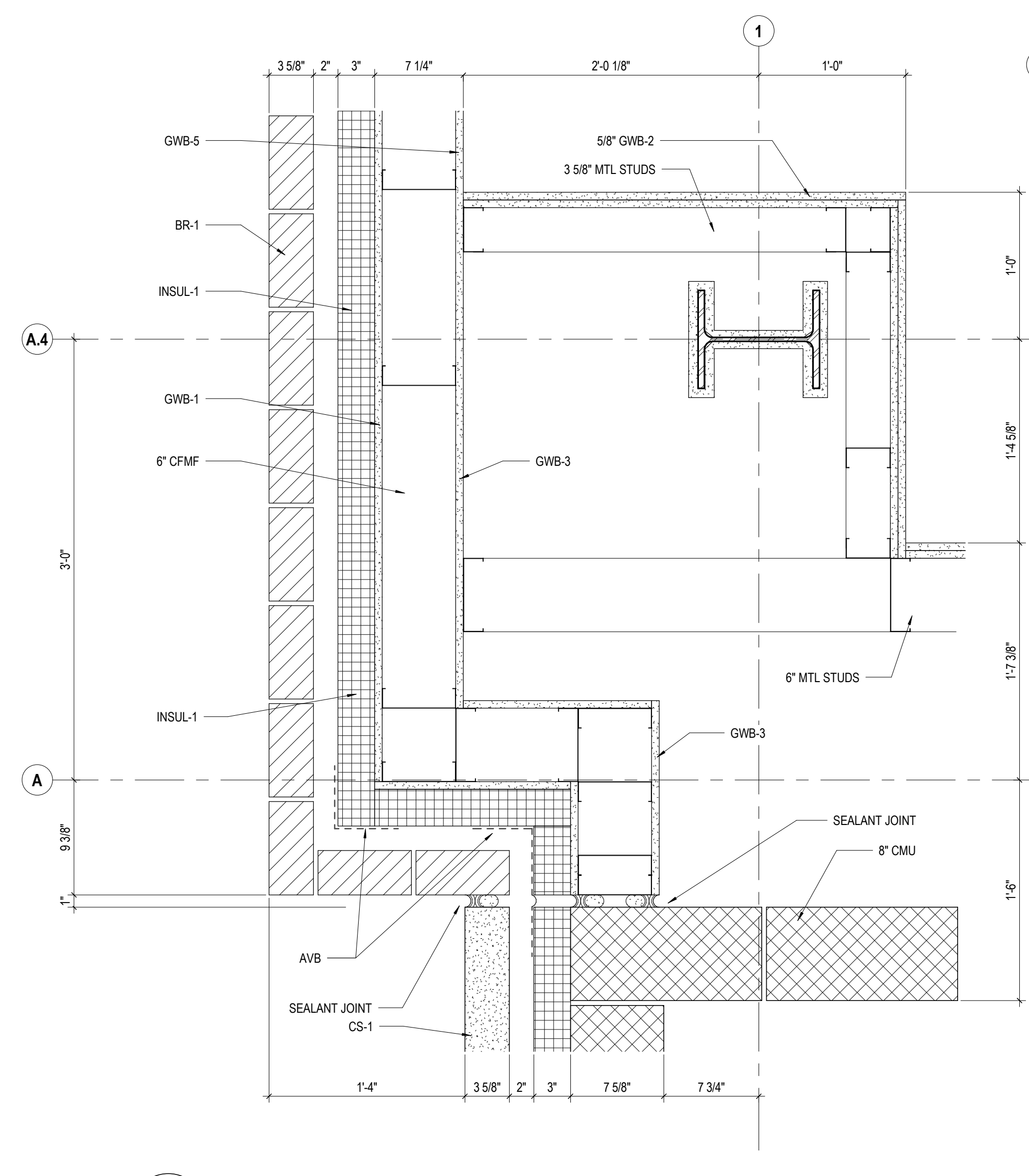
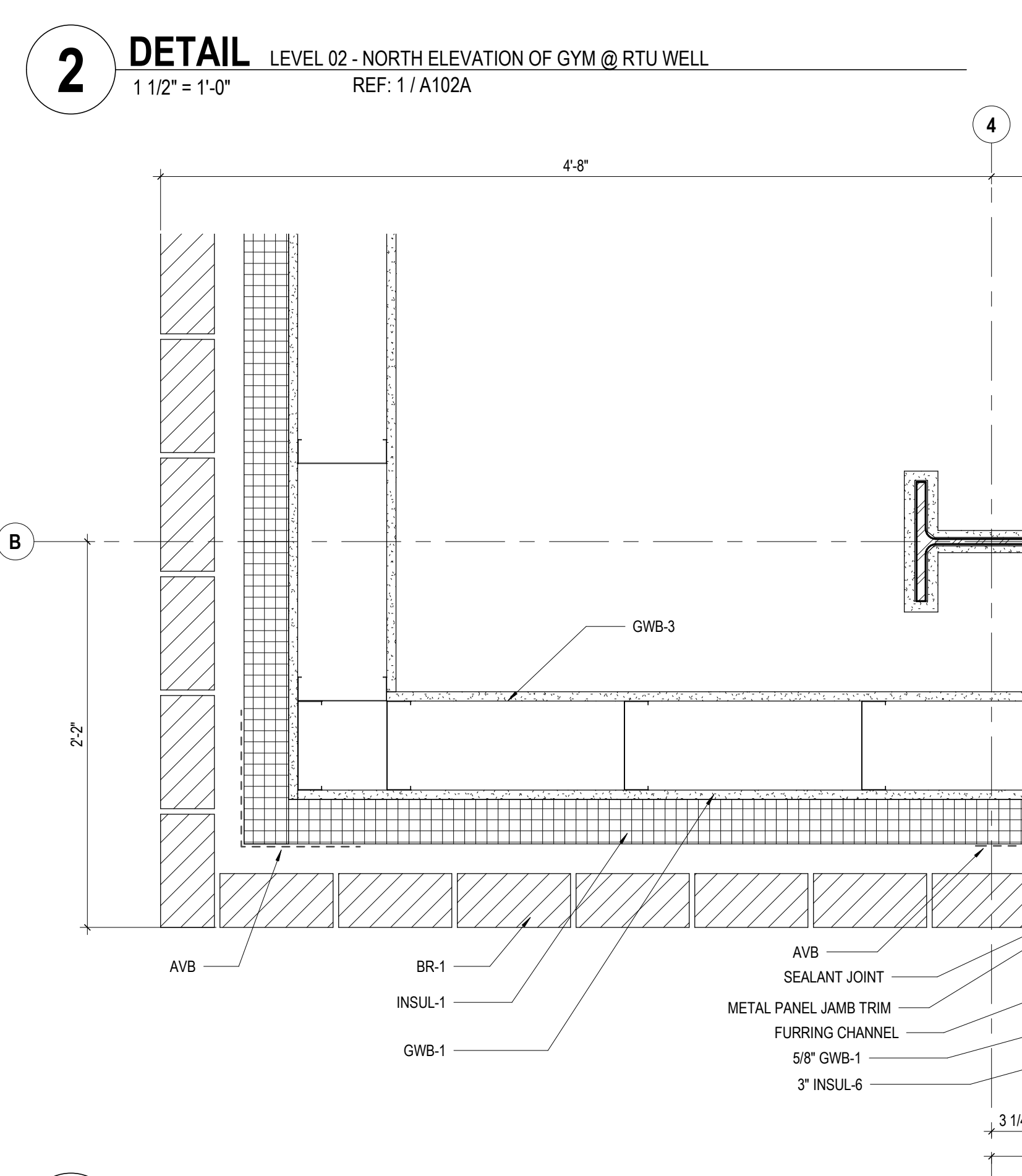
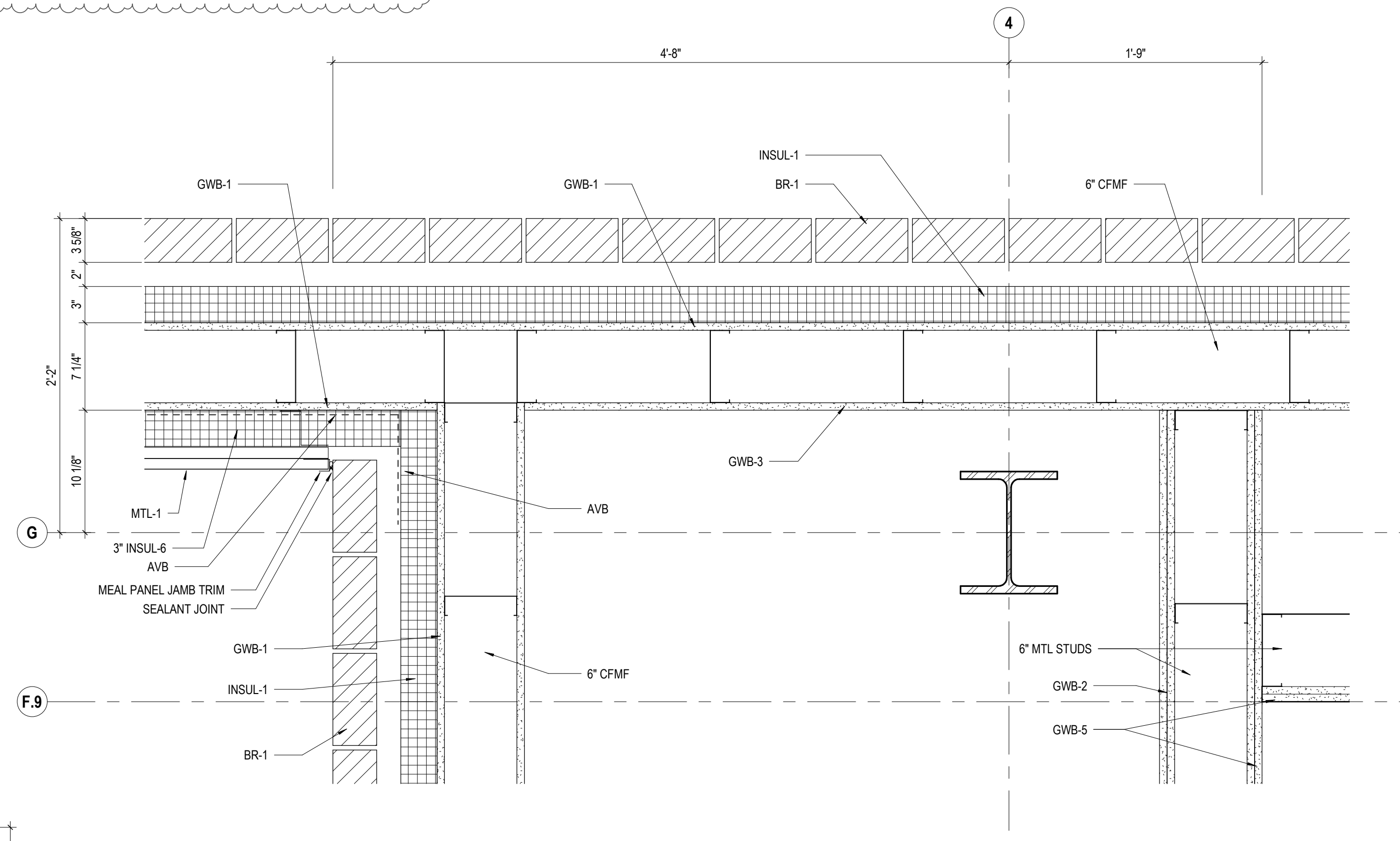
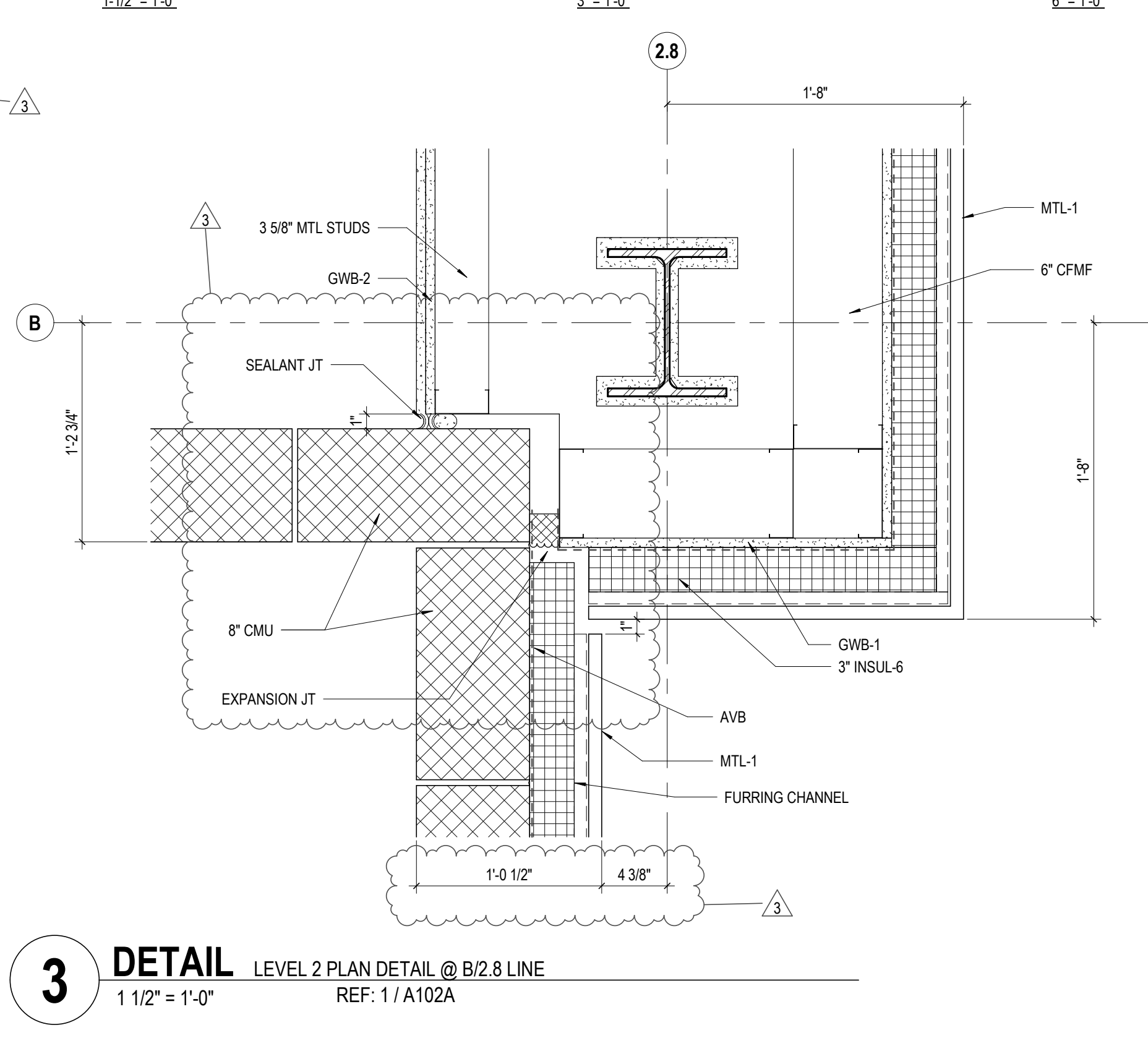
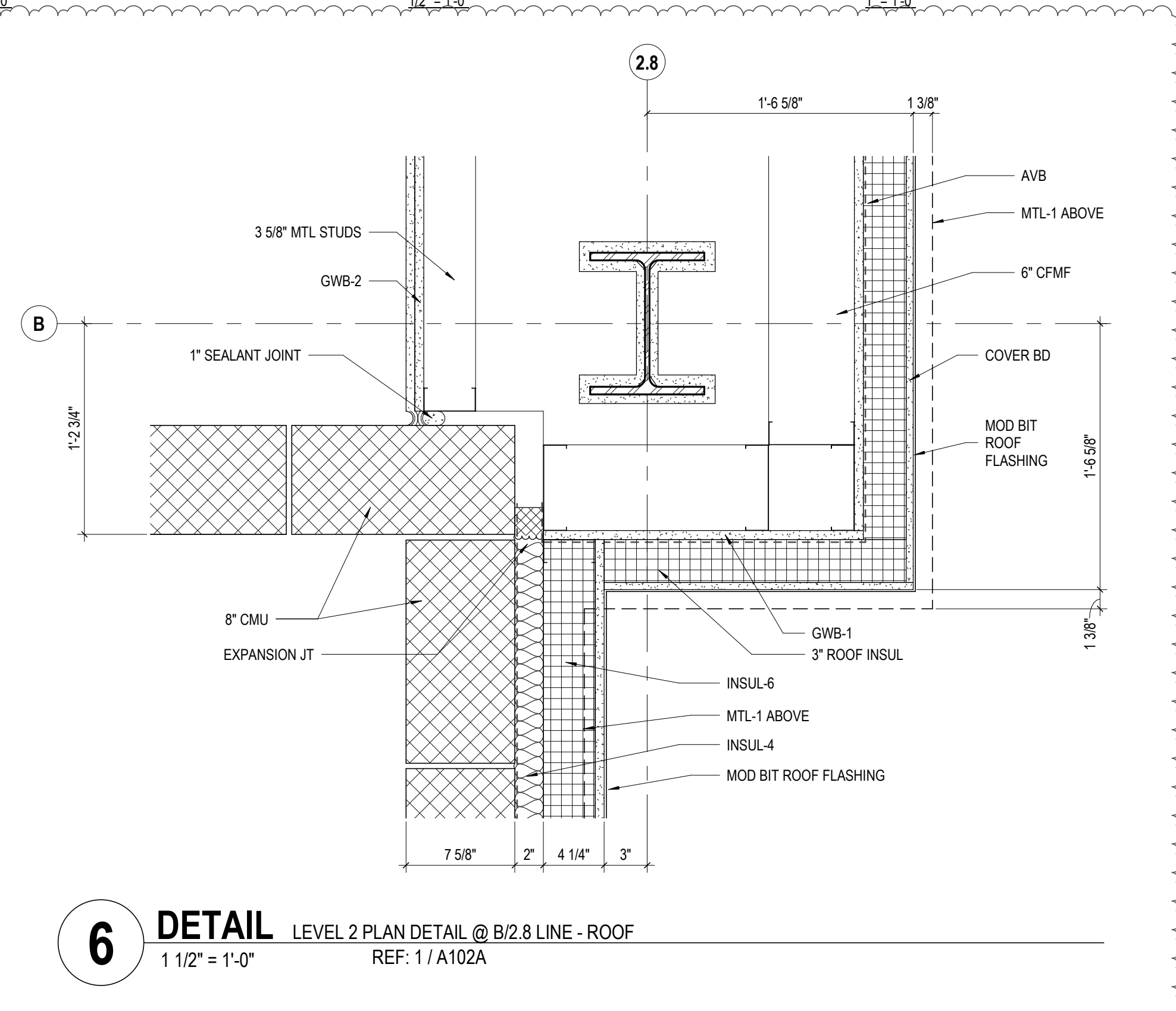
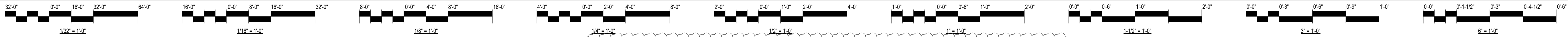


Response: The specified control sequences and associated work, including points list, are included as part of the basis of design and part of the Contract Documents. Bidder's Work shall comply with the Contract Documents, including any/all approved equipment manufacturers.

This Addendum includes the following attached Specification(s), Document(s), and/or Drawing(s):

1. A561 – Exterior Plan Details, dated 06/07/2021.

END OF ADDENDUM NO. 04



WENDELL PHILLIPS ACADEMY HIGH SCHOOL ANNEX
 244 EAST PERSHING RD
 CHICAGO, IL 60653
 CHICAGO PUBLIC SCHOOLS
 CITY OF CHICAGO, MAYOR LORI E. LIGHTFOOT

Architect of Record:
 MOODY NOLAN, INC.
MOODY NOLAN
 ADDRESS: 209 S. LASALLE ST. #820
 Chicago, Illinois 60604
 PHONE: (312) 929-2516
 FAX: (312) 929-4873
 WEB: www.MoodyNolan.com

David Mason + Associates
 333 S. Desplaines St., #200
 Chicago, IL 60661
Structural Engineering
IMEG
 225 W. Washington St., #2700
 Chicago, IL 60606
MEPPP Engineering
TERRA ENGINEERING
 225 W Ohio St., 4th Floor
 Chicago, IL 60654
Civil Engineering
Landscape Architecture
MAP Strategies, LLC
 181 W. Madison St., 3815
 Chicago, IL 60602
Code Consultant

WARNING:
 ASBESTOS-CONTAINING BUILDING MATERIALS ARE OR MAY BE PRESENT IN THIS BUILDING. AN ASBESTOS-MANAGEMENT PLAN IS AVAILABLE IN THE SCHOOL FOR REVIEW UPON REQUEST. NO PERSON MAY DISTURB ASBESTOS-CONTAINING MATERIALS UNLESS THAT PERSON IS A LICENSED ASBESTOS WORKER OR CONDUCTS SUCH WORK IN ACCORDANCE WITH SPECIFICATIONS CONTAINED IN THE PROJECT DOCUMENTS AND IN COMPLIANCE WITH ILLINOIS DEPARTMENT OF HEALTH RULES AND REGULATIONS.

MARK	DESCRIPTION	DATE
	ISSUED FOR BID	05/07/2020
A	PERMIT REV #1	05/27/2021
2	ADDENDUM #3	05/03/2021
3	ADDENDUM #4	06/07/2021

PBC Project Name: Wendell Phillips Academy HS Annex
 PBC Contract No: 05395
 Project No: R20558
 Title
EXTERIOR PLAN DETAILS
 Sheet