

Logan Square Plaza

Community Engagement Meeting #2

Public Building Commission of Chicago

Chicago Department of Transportation

Chicago Department of Planning and Development

Hitchcock Design Group

February 24, 2025



Agenda

1. Introduction
2. Purpose and Goals
3. Existing Conditions
4. Community Engagement
5. Conceptual Plans
6. Discussion / Next Steps



Introduction

Project Team

Public Building Commission of Chicago (PBC)

- Ray Giderof, Executive Director
- Kerl LaJeune, Director of Planning & Design
- Jose Barajas, Project Manager

Chicago Department of Transportation (CDOT)

- Lubica Benak, Livable Streets Program Manager
- Jamie Osborne, Project Manager, Livable Streets
- Garth Wemmer, Project Manager, Livable Streets

Department of Planning and Development (DPD)

- Carmen Martinez, Supervising Planner

Hitchcock Design Group (HDG)

- Joel Baldin, Principal
- Anais Placido, Associate



Community Advisory Group

35th Ward Office

La Boulangerie & Co. Logan

Palenque / Logan Square Neighborhood Association

Logan Square Chamber of Commerce

Lucy Gonzalez Parsons Apartments

Logan Square Comfort Station – 2579 North Milwaukee Avenue

Andros Taverna

BRC - Bickerdike

Logan Square Preservation

Anticipated Project Schedule

Community Advisory Group Mtg #1	August 30, 2024
Community Event (Farmer’s Market)	October 20, 2024
Community Engagement Mtg #1	October 22, 2024
Community Event (Pumpkin Festival)	October 26, 2024
Online Survey	October 18 – November 15
Community Advisory Group Mtg #2	November 19, 2024
Community Advisory Group Mtg #3	February 3, 2025
Community Engagement Mtg #2	February 24, 2025
Design, Engineering & Permitting	Q4 2024 – Q3 2025
QC Procurement	Q4 2025
Construction	Q1 2026 – Q1 2027



PURPOSE AND GOALS

Purpose

Design and create a dynamic and interactive public space that supports the vision of a unified Logan Square.

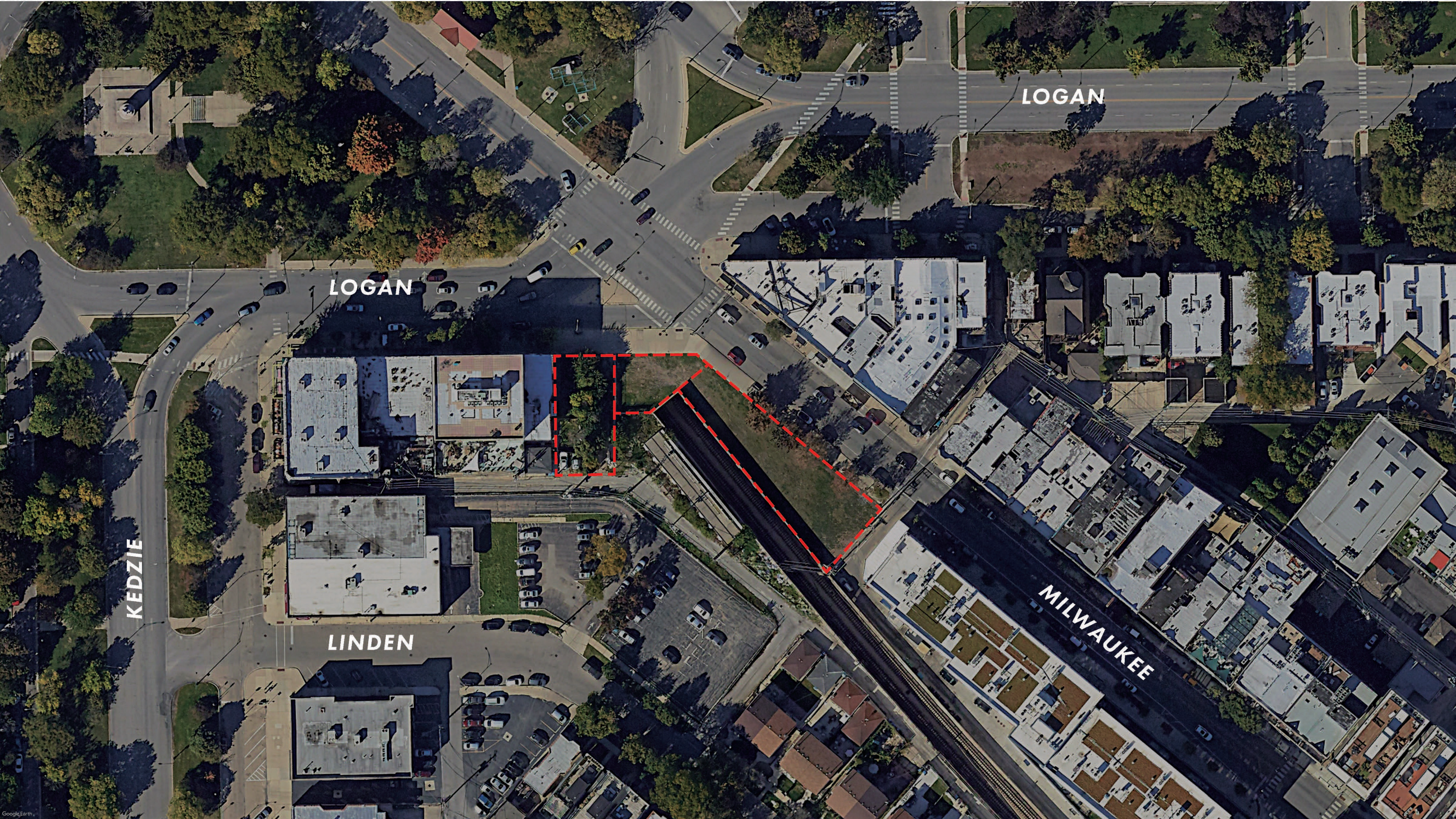
Goals

Support community needs by increasing access to public open spaces, and ensuring that outdoor areas are safe, vibrant, and flexible.

Align with existing and new neighborhood developments that promote pedestrian connections and quality spaces for recreation.

Acknowledge the critical and rich cultural heritage of the Logan Square community

Existing Conditions



LOGAN

LOGAN

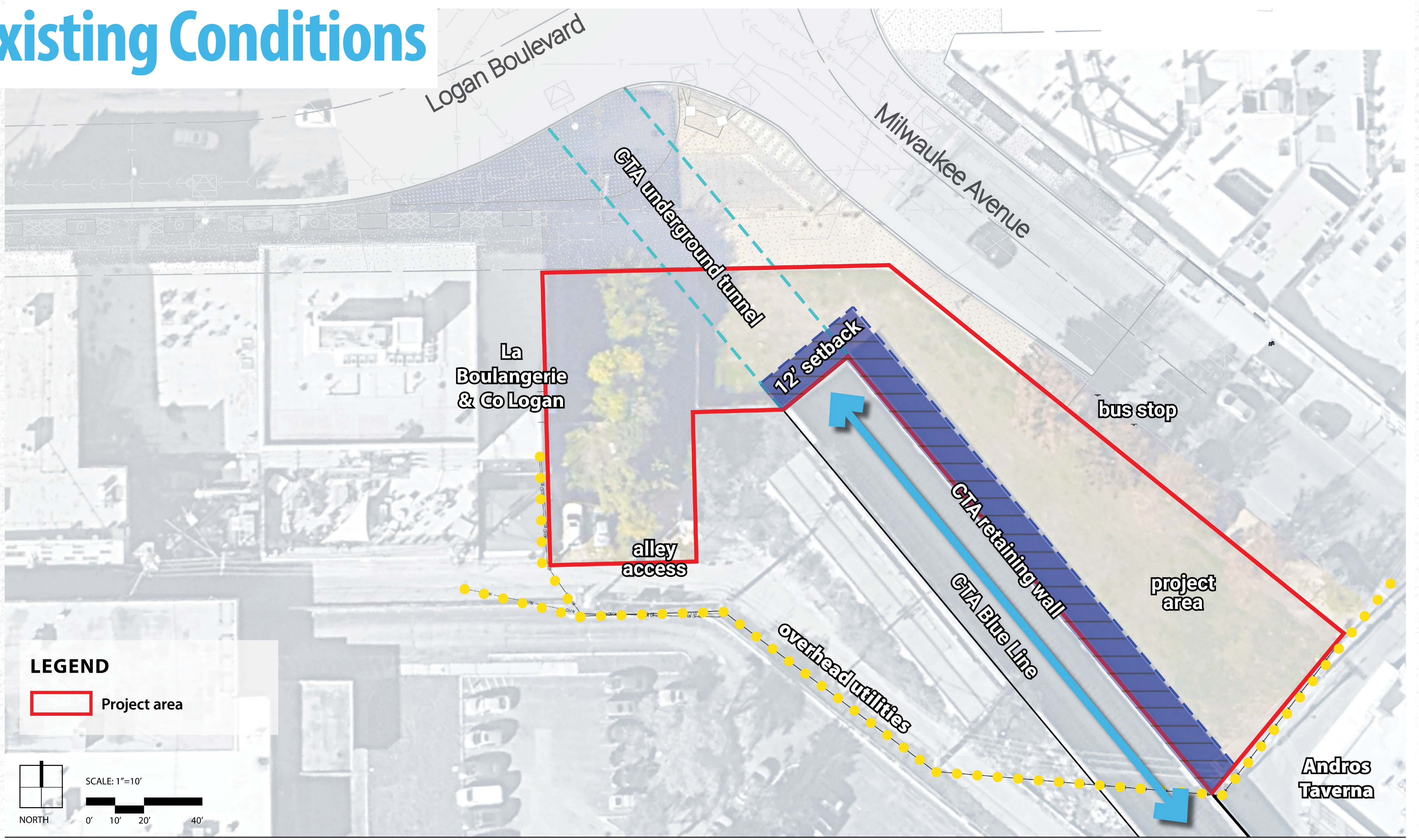
KEDZIE

LINDEN

MILWAUKEE



Existing Conditions





Community Engagement

ENGAGEMENT

Community Events (In-Person)

10/20 FARMERS MARKET
480 participants

10/27 PUMPKIN FESTIVAL
217 participants

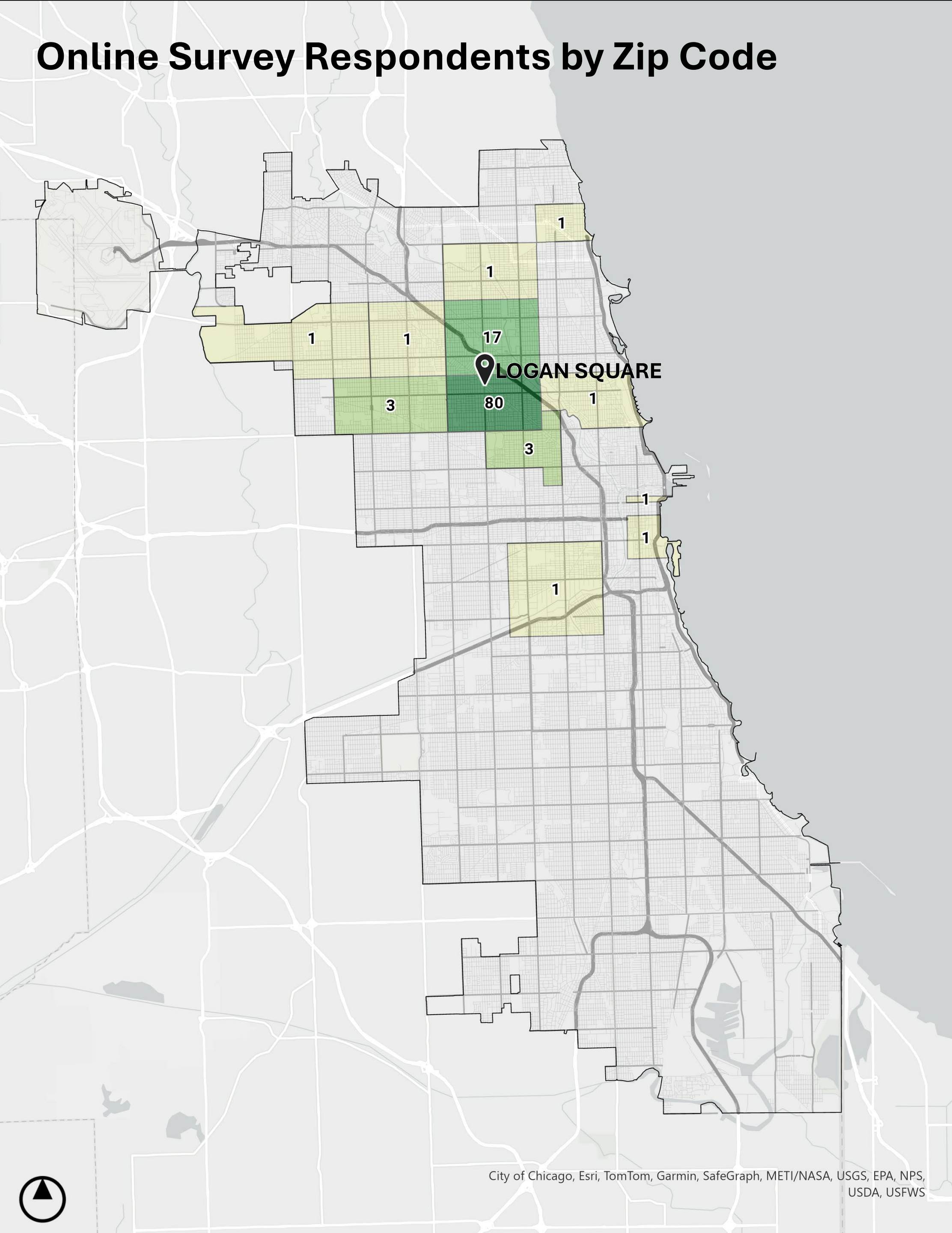
Public Meeting (In-Person)

10/22 Avondale / Logandale Elementary
82 participants

Online Survey

165 participants

944 total engagements



WHAT WE HEARD

What would you like to do in the plaza?

Relax - Light some space – Watch concert – Smell the flowers – Get some shade...

The plaza should reflect the neighborhood's...

Unique & diverse public spaces –
Traditional architecture & monuments – Future...

Prioritize the following amenities...

Pedestrian improvements – Landscape improvements – Space for gathering...

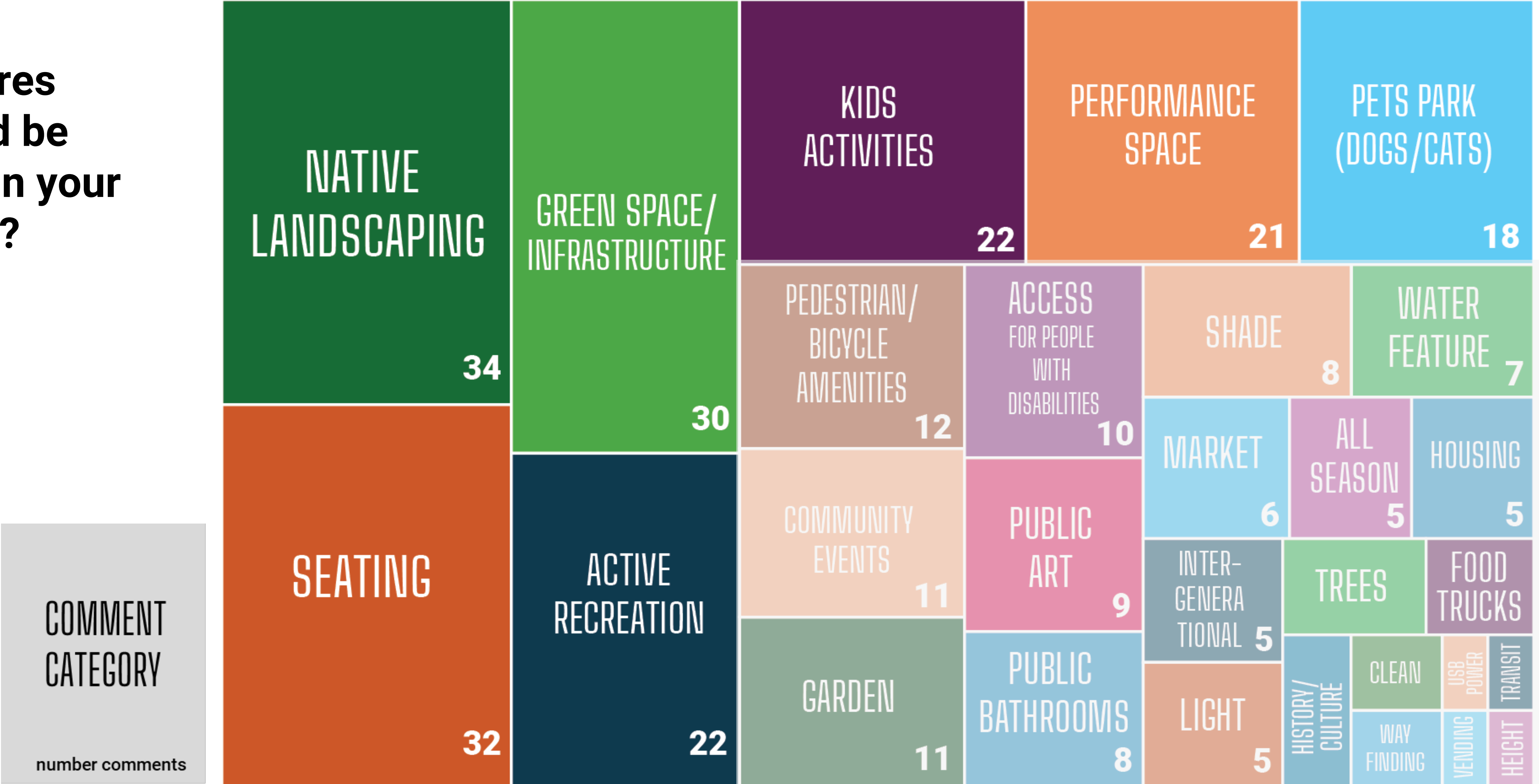
Logan square plaza should feel...

Welcoming – Safe – Familiar – Relaxing...



WHAT WE HEARD

What features would be best in your plaza?



Conceptual Plans

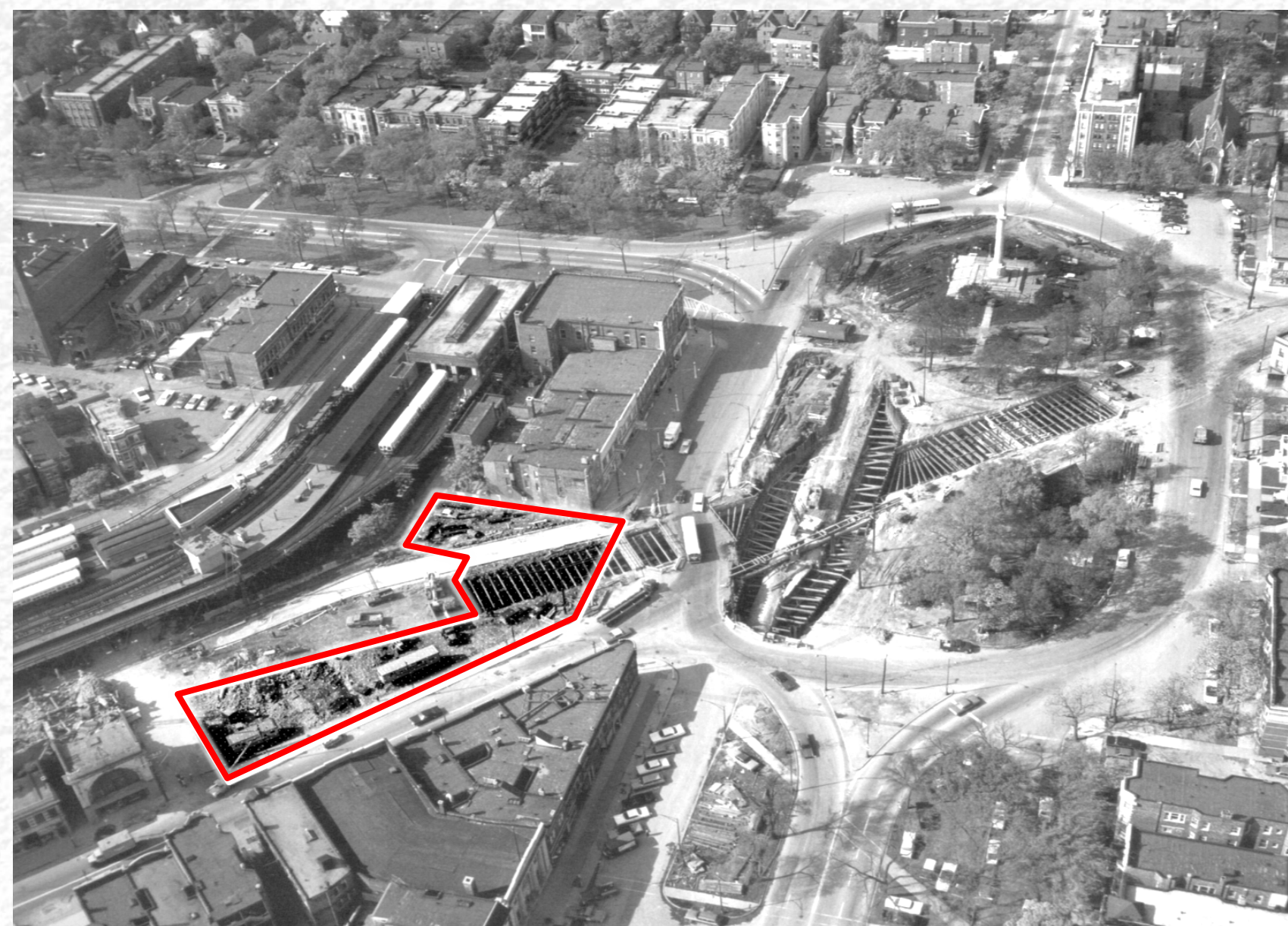
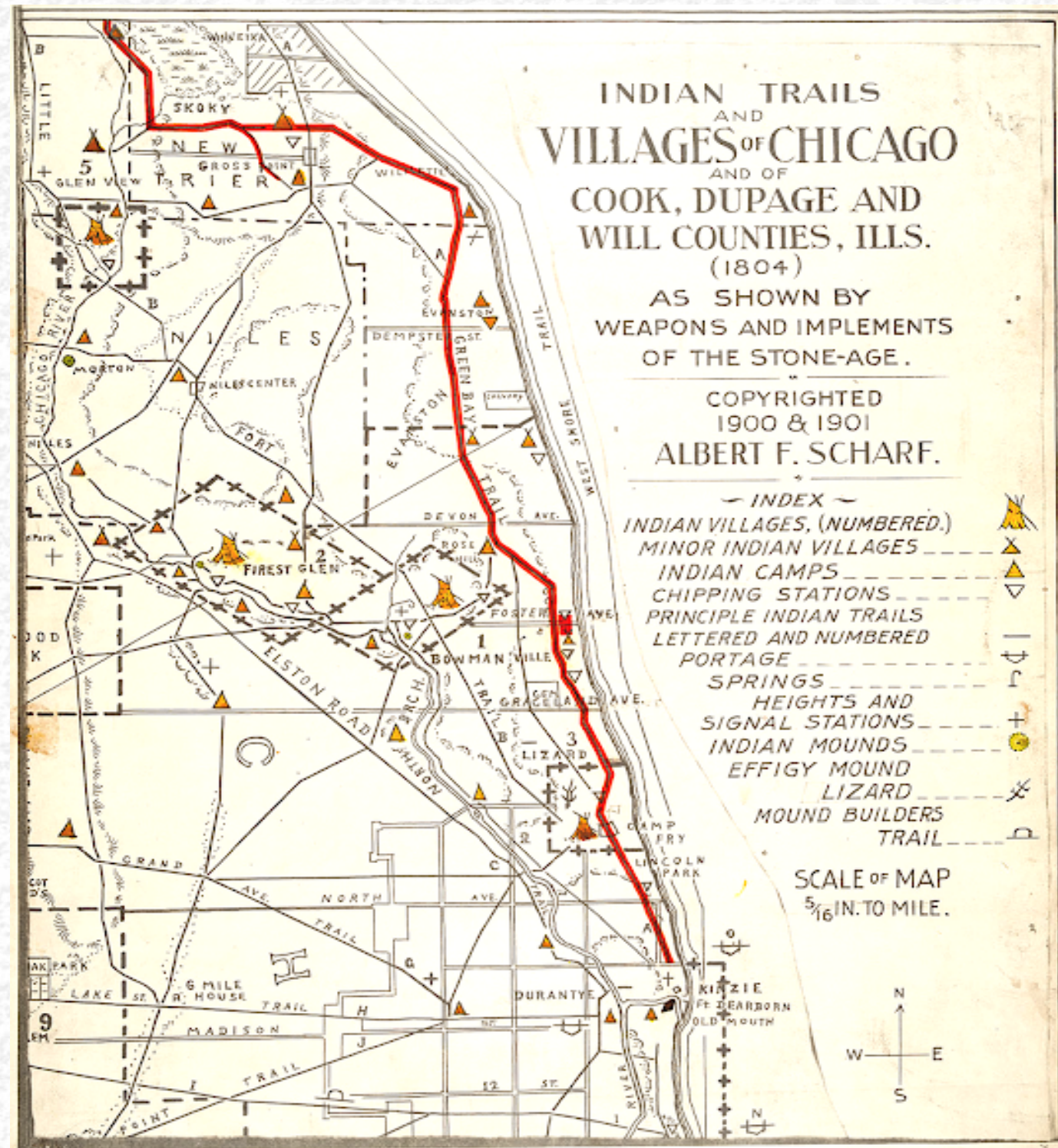
Potential Opportunities

- Drainage improvements (potential for green infrastructure and opportunities to highlight storm water)
- Water improvements (potential lawn hydrant)
- Lighting
- Flexible open space (pavement, lawn, synthetic turf)
- Special paving
- Tree, shrubs, perennials, grasses, etc. (native or native-like, minimal maintenance)
- Permanent Site furniture (bollards, bike racks, trash receptacles, tables and seating, stadium or platform style benches)

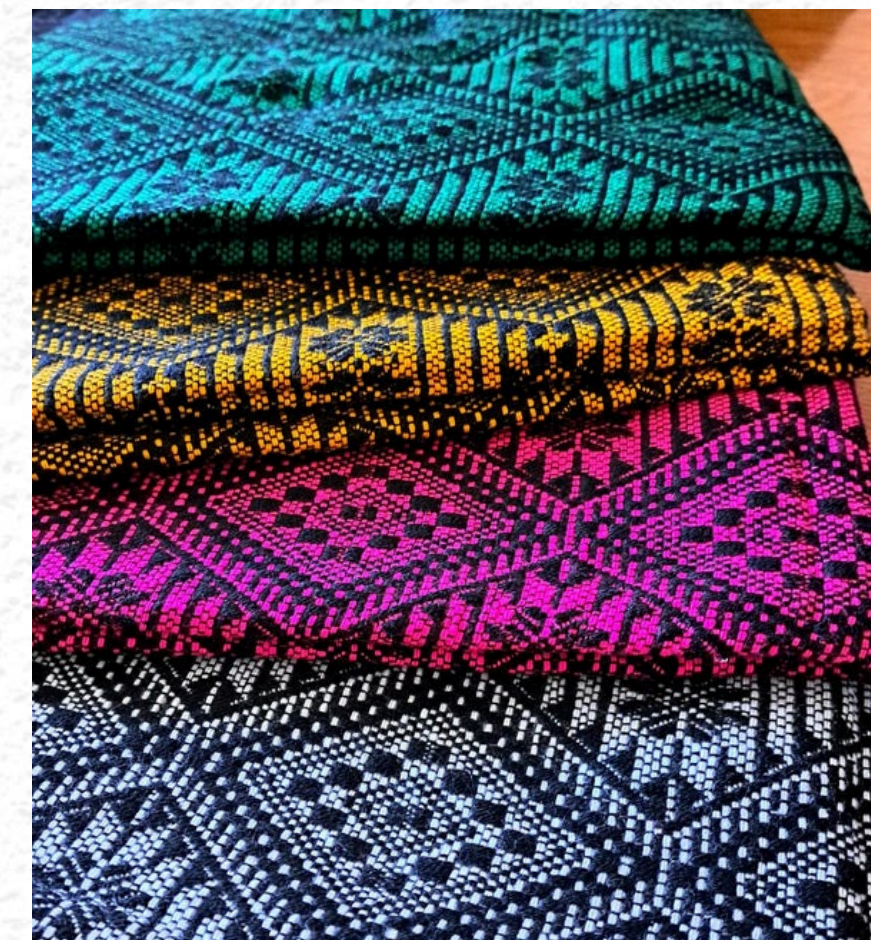
Potential Opportunities (cont.)

- Unique design elements (stage (or space for stage), shade structure, seating, cultural wayfinding, decorative elements, etc.)
- Incorporation of art
- Setback around CTA (12' setback with no permanent objects that would impact future maintenance on the CTA)
- Coordination with adjacent streetscape and private development
- Transit (benches and coordination with bus stop)

Historical Context



Neighborhood & Cultural Heritage



Present – A diverse community

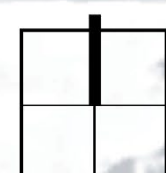


Concept A – Plan



LEGEND

 Project area

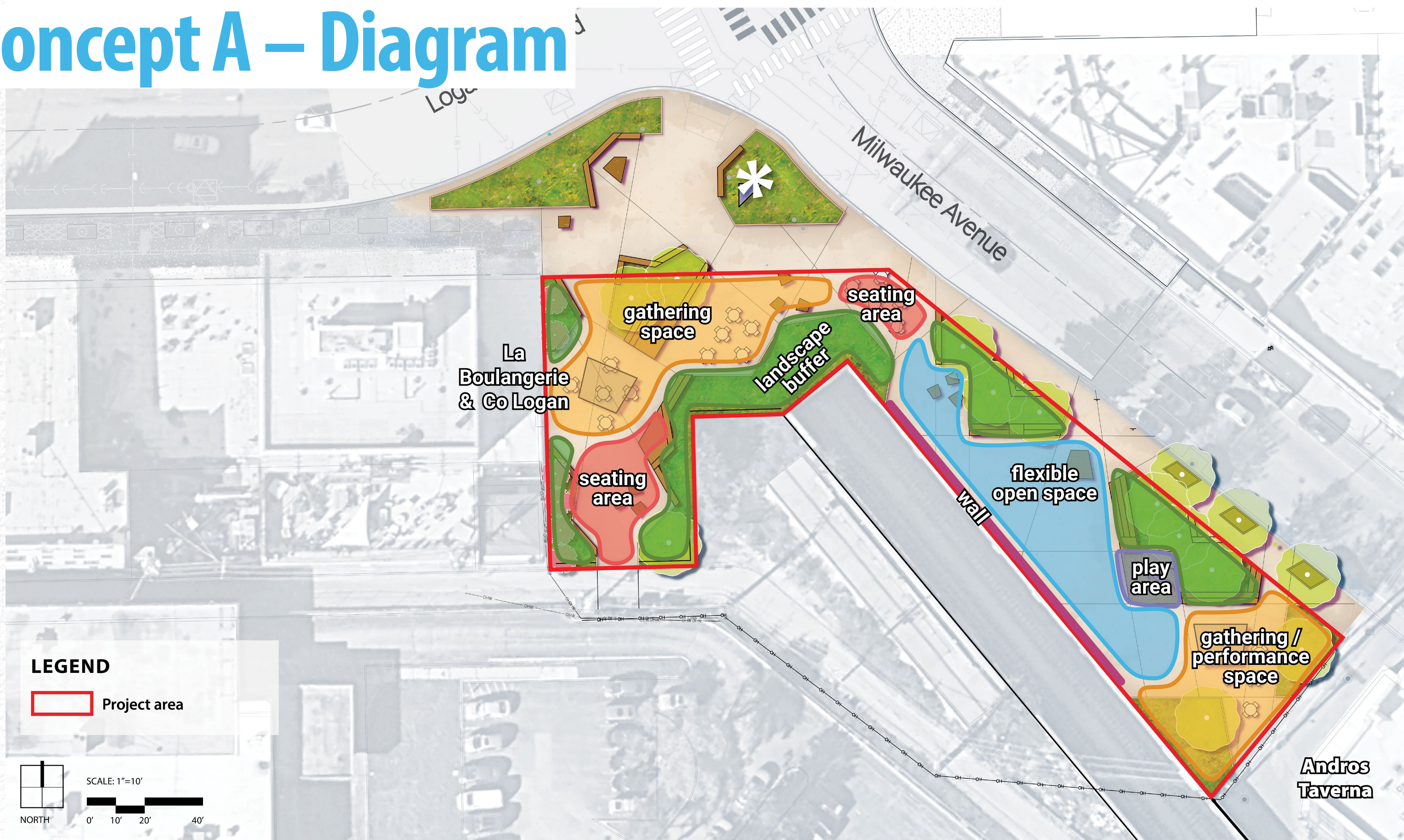


NORTH

SCALE: 1"=10'

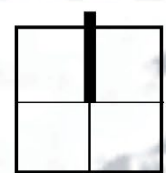


Concept A – Diagram



LEGEND

 Project area



NORTH

SCALE: 1"=10'



Logan Boulevard

Milwaukee Avenue



2. COLUMNAR TREES



3. NATIVE PLANTINGS



1. TREES IN CURBED PLANTER



4. SHADE STRUCTURE & SEATING



5. IDENTIFIER



6. STADIUM SEATING



10. TABLES & CHAIRS



9. SPECIAL PAVING



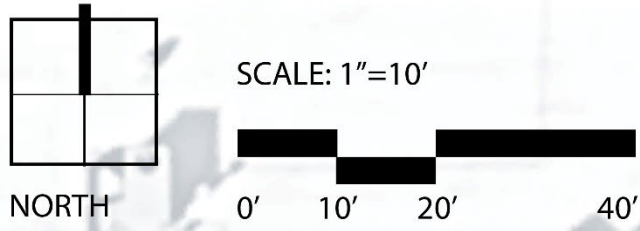
8. PLAY SPACE



7. PLATFORM SEATING

LEGEND

 Project area



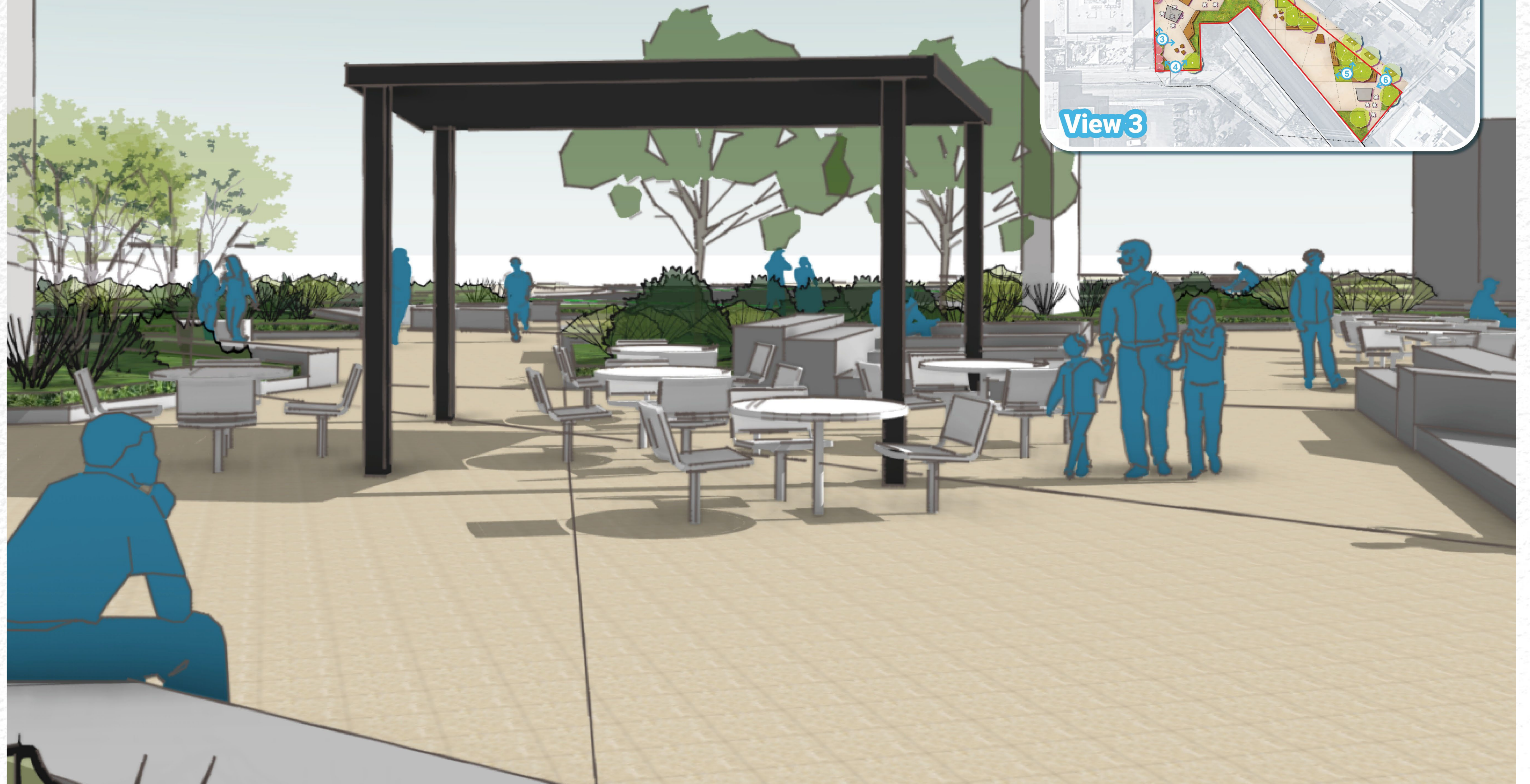
Concept A – View 1



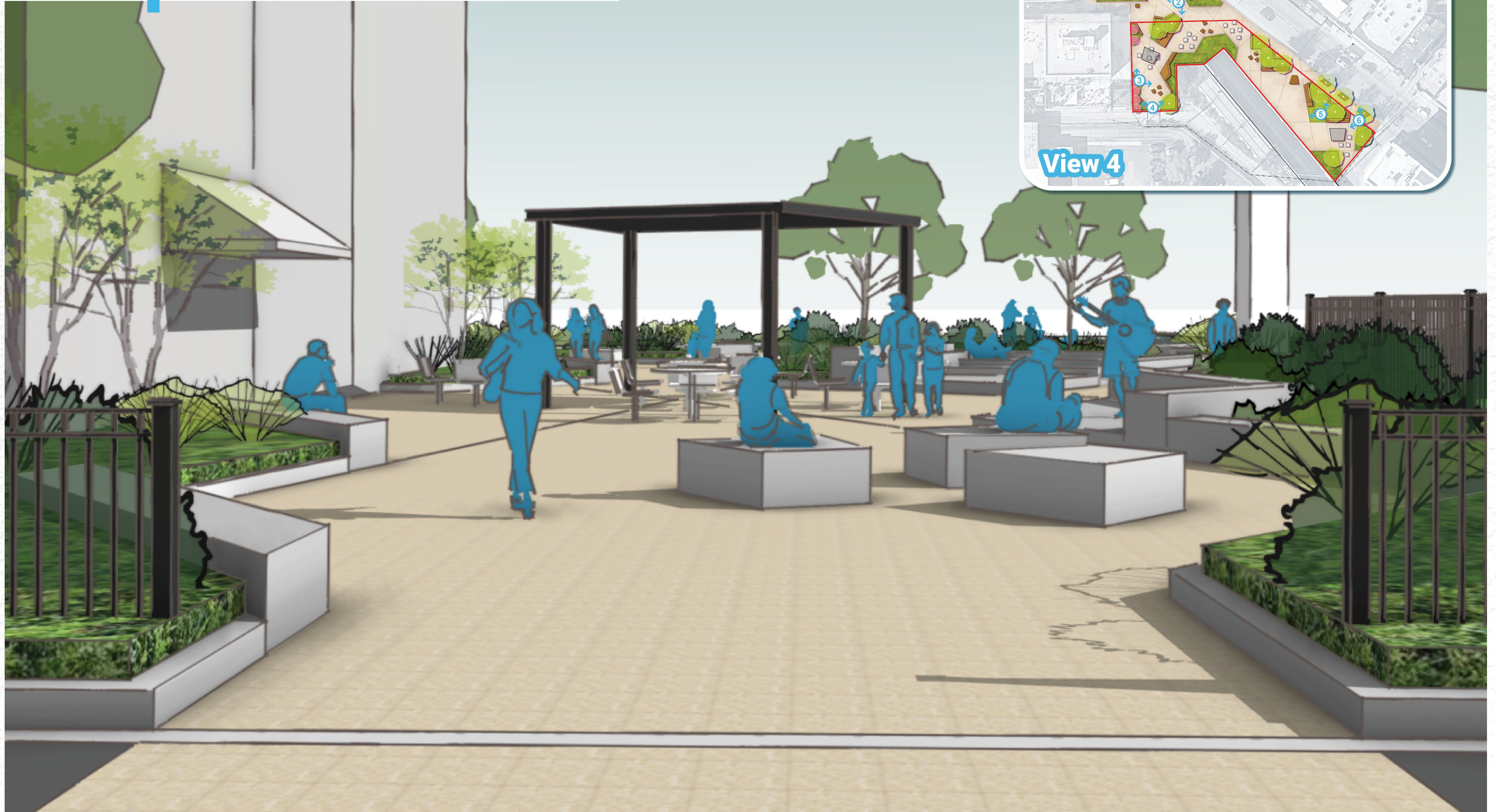
Concept A – View 2



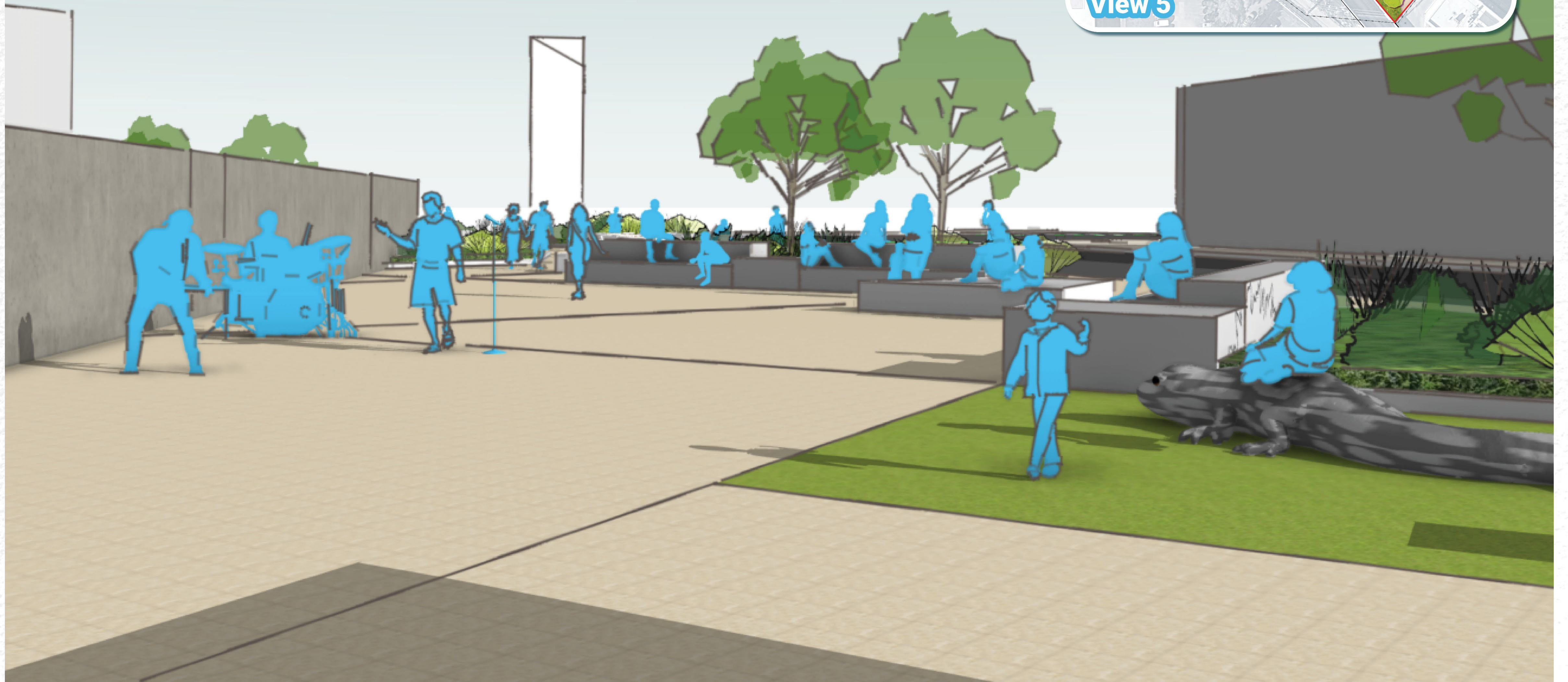
Concept A – View 3



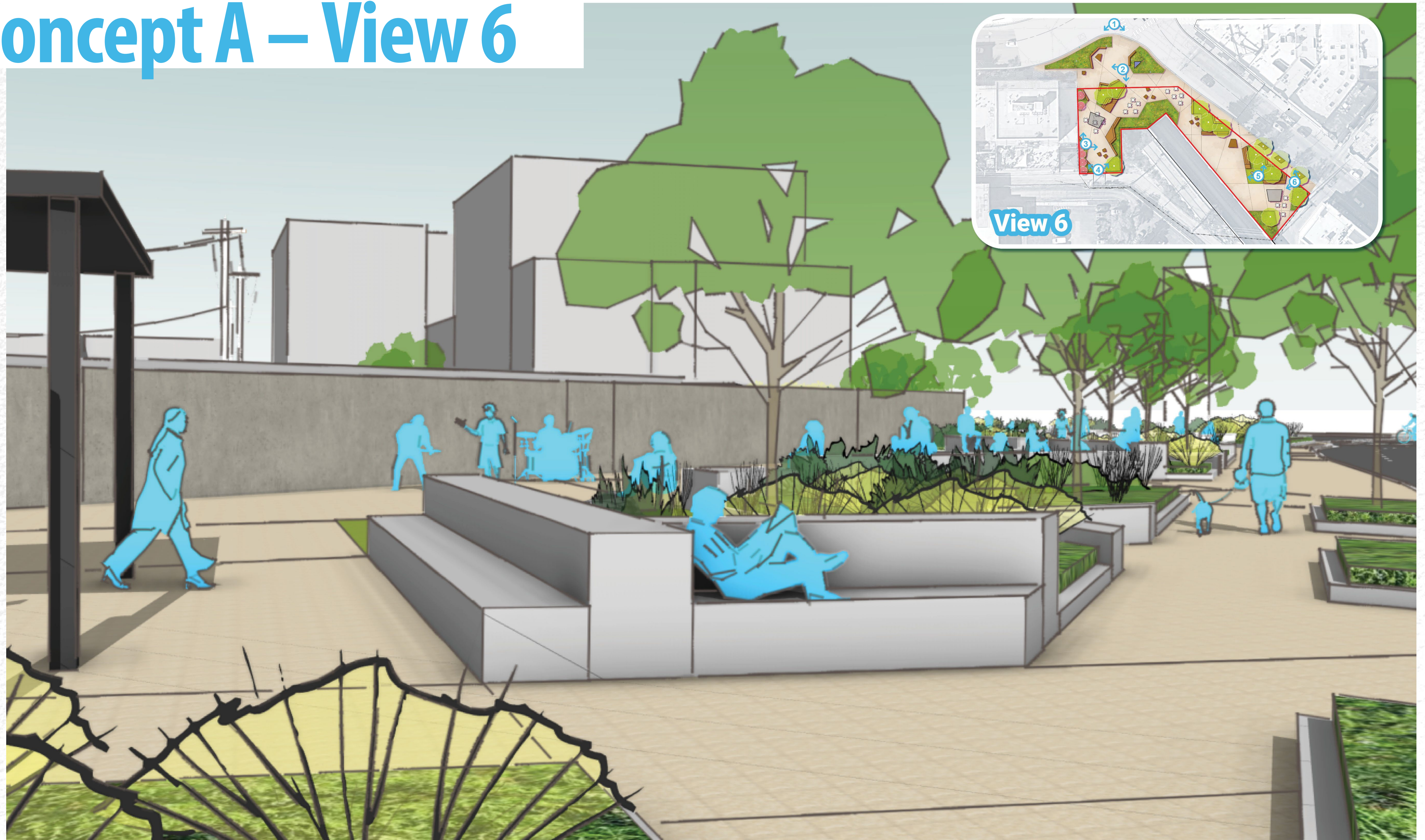
Concept A – View 4



Concept A – View 5



Concept A – View 6

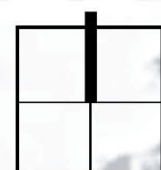


Concept B – Plan



LEGEND

 Project area

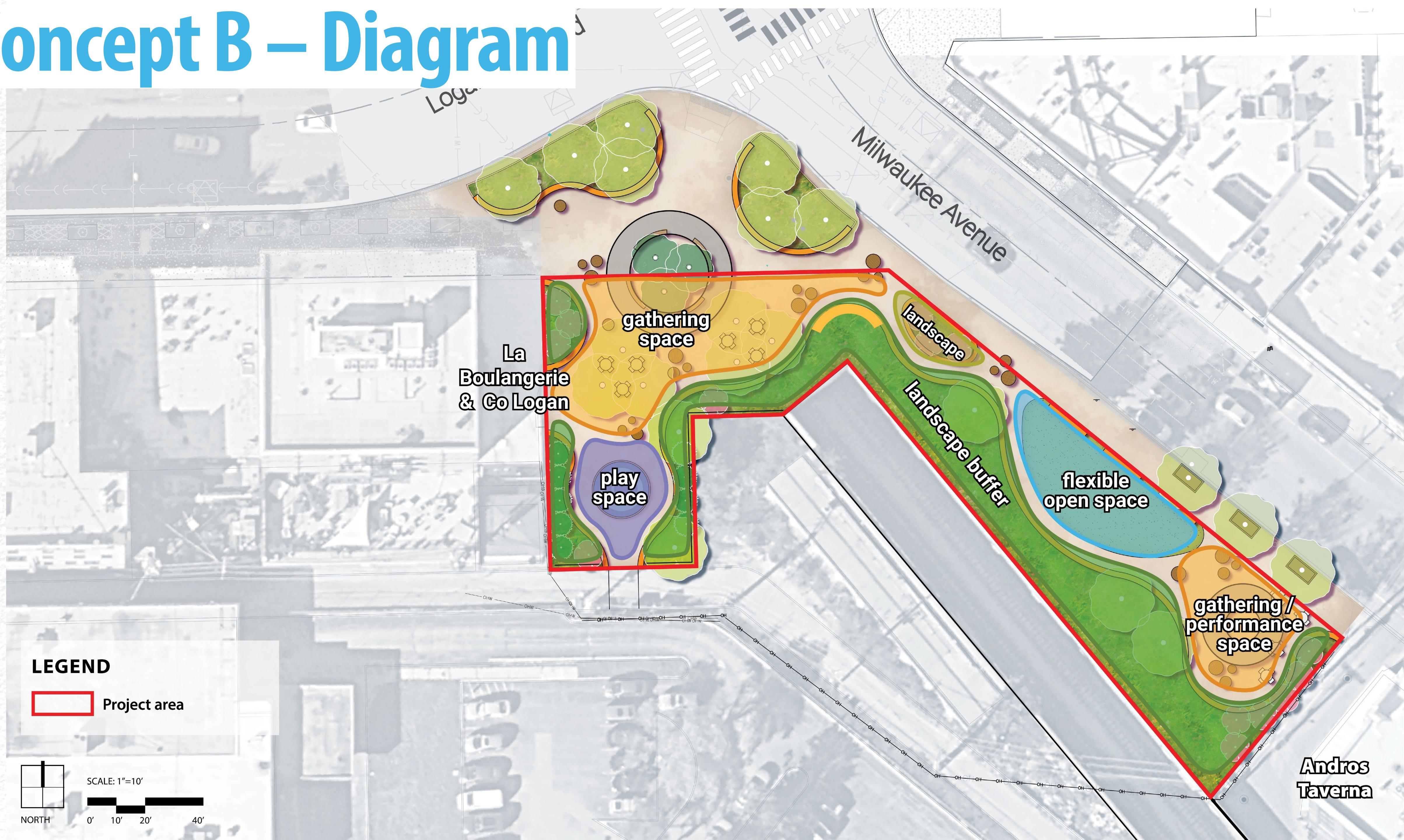


NORTH

SCALE: 1"=10'



Concept B – Diagram





2. ORNAMENTAL TREES



3. NATIVE PLANTINGS



1. TREES IN CURBED PLANTER



11. EVERGREEN TREES



10. SPECIAL PAVING



9. PLAY AREA



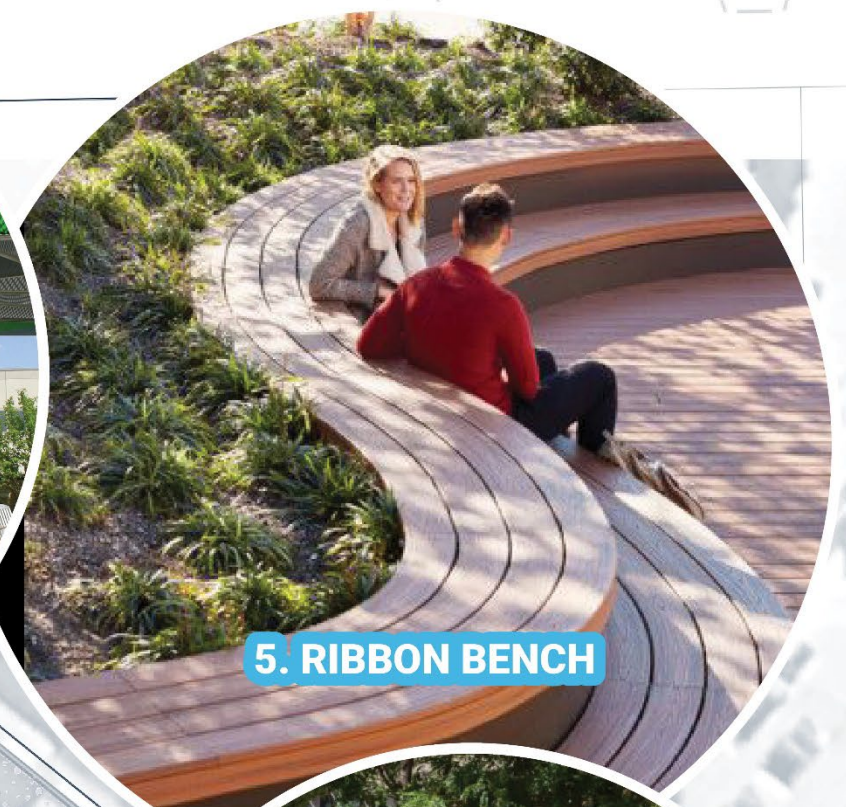
8. PLATFORM SEATING



7. FLEXIBLE TURF AREA



4. SHADE STRUCTURE & SEATING



5. RIBBON BENCH



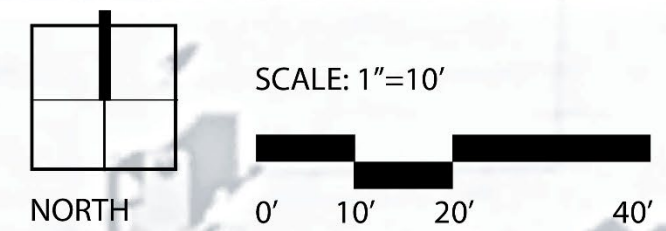
6. IDENTIFIER

Logan Boulevard

Milwaukee Avenue

LEGEND

Project area



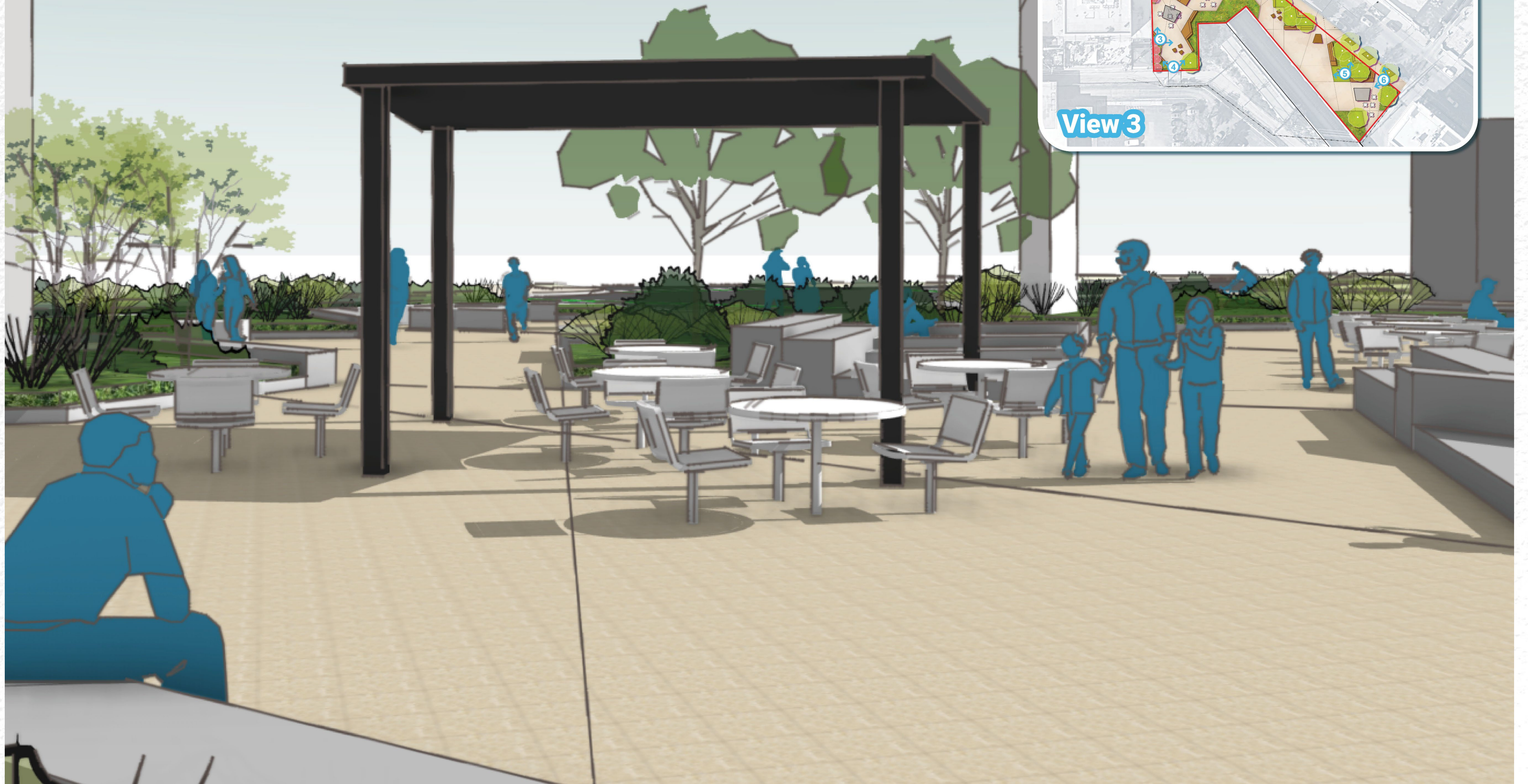
Concept B – View 1



Concept B – View 2



Concept B – View 3



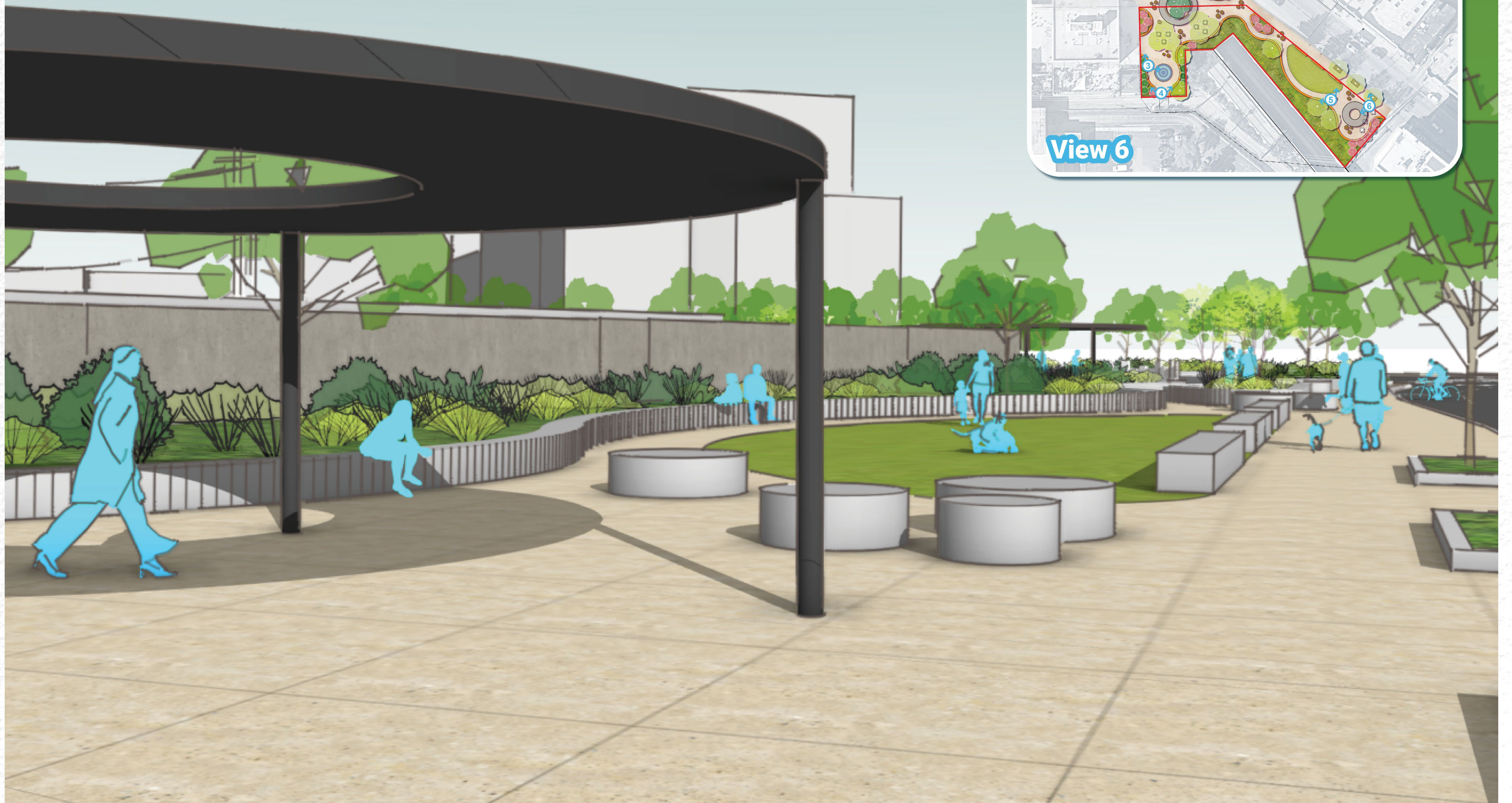
Concept B – View 4



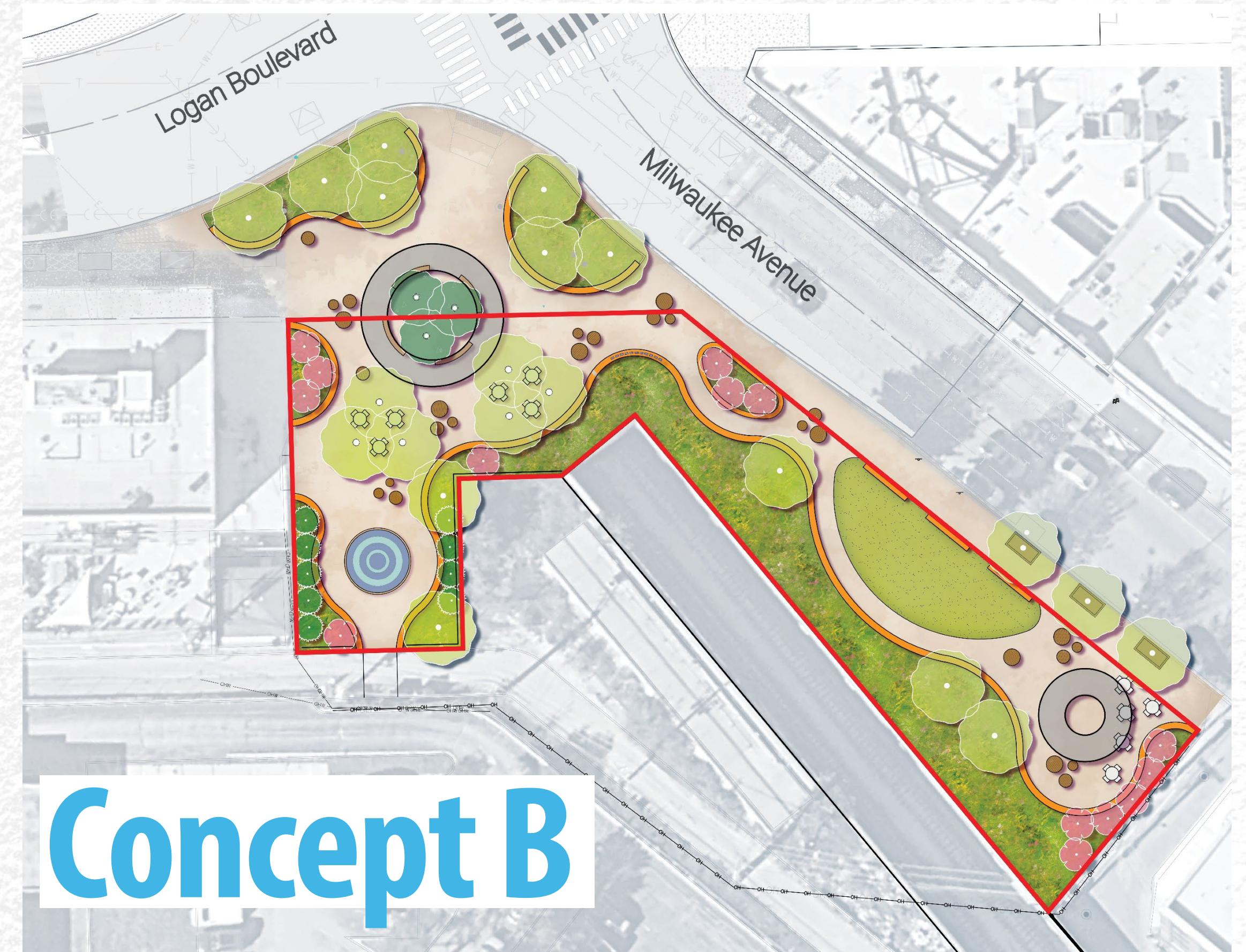
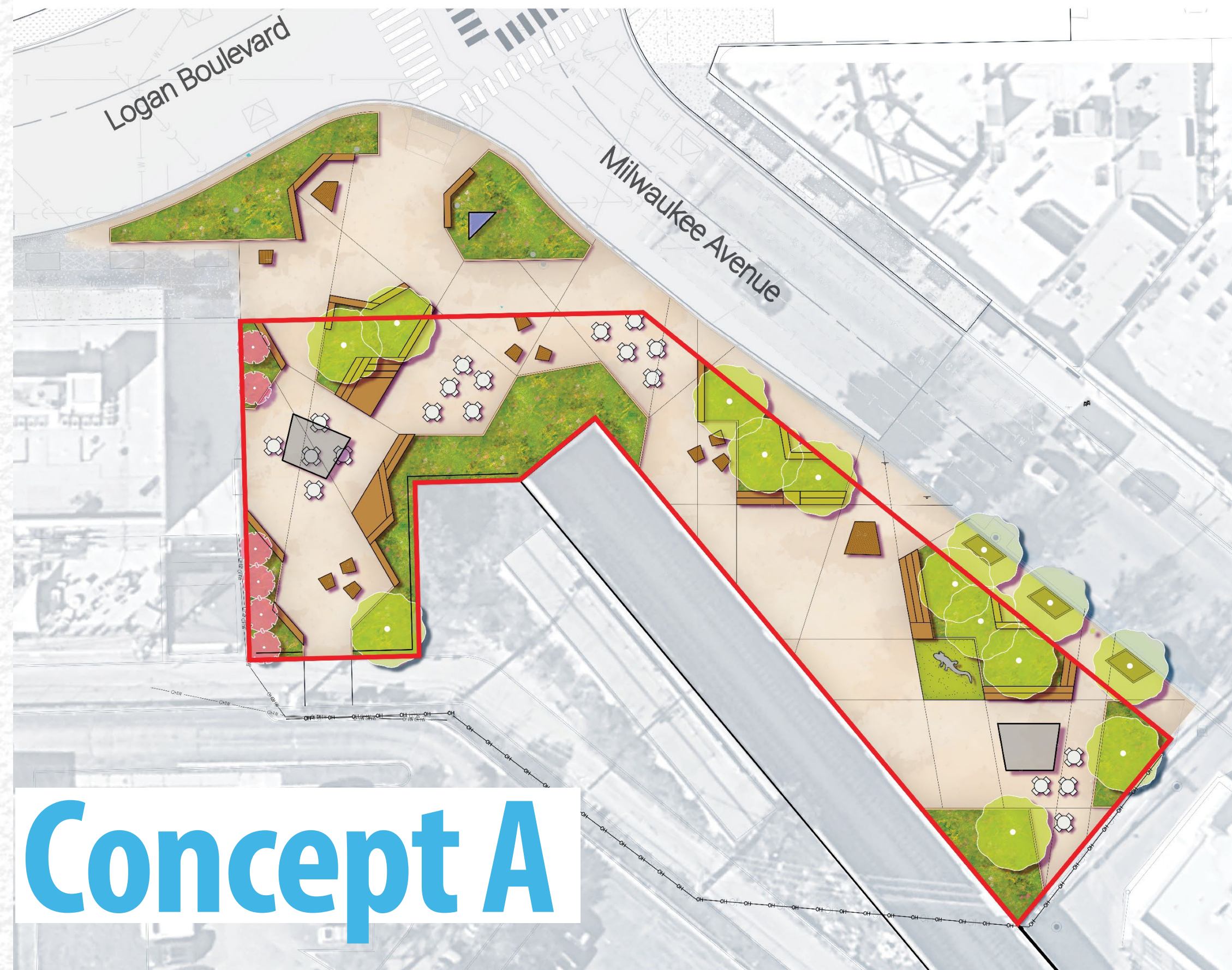
Concept B – View 5



Concept B – View 6



Discussion



1. Which concept do you like the most - Why?
2. How do the design elements reflect community needs?
3. How does the placement of the design elements reflect community needs?
4. How can the design concepts be improved?

Next Steps

If you have any questions or would like to provide additional comments,
please contact: **bryant.payne@cityofchicago.org**

Online Survey



Help the City of Chicago shape the design of a new public plaza in Logan Square at the intersection of Milwaukee Ave and Logan Boulevard.

Scan this code to access the online survey.