



# PUBLIC BUILDING COMMISSION of Chicago

**Brandon Johnson**

Mayor

**Ray Giderof**

Executive Director



# HOUSEKEEPING ITEMS

## While we wait...

### Please **MUTE** your computers and/or cellphones

- Press \*6 to unmute (if asked to speak)

### Please **CHANGE** your screen name

- Use 'Your Name (Company Name (or Initials))'  
EXAMPLE: Dee Taylor (PBC)

### Please **ADD** your name to Chat

- Use 'Your Name|Company Name (or Initials)'  
EXAMPLE: Dee Taylor (PBC)

### Please **WAIT** for Q&A to ask questions

- Q&A session will be at the end of each meeting
- Feel free to use the 'Chat' feature





**Chicago Department of Transportation  
Works Progress Administration  
Street Reconstruction**

**(West 92<sup>nd</sup> St., West 106<sup>th</sup> St., West 107<sup>th</sup> St., and West 114<sup>th</sup> St.)**

**C1625**

**Pre-Bid and Technical  
Review Meeting**

**June 13, 2025 at 11:00am**

# AGENDA

Introductions

---

Procurement Details

---

Compliance

---

Technical Review

---

Q&A



# Introductions

# INTRO

PBC

---

CDOT & Partners

---

General Contractors

---

Sub-Contractors/Suppliers

---



# Procurement Details

## PROJECT OVERVIEW

### Project Locations

- West 92<sup>nd</sup> Street from South Leavitt Street to South Hamilton Avenue, Chicago, IL
- West 106<sup>th</sup> Street from South Christiana Avenue to South Kedzie Avenue, Chicago, IL
- West 107<sup>th</sup> Street from South Spaulding Avenue to South Kedzie Avenue, Chicago, IL
- West 114<sup>th</sup> Street from South Rockwell Street to South Western Avenue, Chicago, IL

## PROJECT OVERVIEW

### General Scope of Work:

- earth excavation
- portland cement concrete base course
- hot-mix asphalt surface course
- sewer main, water main and drainage structures
- concrete curb and gutter
- concrete sidewalks
- tactile/detectable warning surface system for curb ramps
- concrete driveways and alleys
- roadway lighting
- thermoplastic pavement marking
- signs
- topsoil, sodding, tree removal and planting

## PROJECT OVERVIEW

### General Scope of Work, continued:

Contractor will be required to prepare a Phasing and Logistics Plan for review and approval by CDOT and PBC, prior to the mobilization and commencement of any Work.

The Contractor shall also be responsible for providing critical submittals, including electrical lighting (poles and luminaires), sewer and water main, and concrete mix design, as determined by the PBC, within thirty (30) days of issuance of the NTP.

# Procurement Details

## PROJECT OVERVIEW

### Time of Completion

#### E. Time of Completion

Substantial Completion must be achieved no later than November 28, 2025. Schedule Milestones must be completed as follows:

Milestone Descriptions	Milestone Dates
<b>Schedule Milestone #1:</b> <ul style="list-style-type: none"><li>Pre-Construction, including Permitting, Construction Submittals, Material and Equipment Procurement, Schedule Preparation, Mobilization, and Utility Coordination.</li></ul> (Work may not commence sooner than July 8, 2025)	7/31/2025
<b>Substantial Completion</b> <ul style="list-style-type: none"><li>Street Reconstuction and Associated Work</li></ul> (Work may not commence sooner than July 31, 2025)	11/28/2025
<b>Schedule Milestone #2: New Landscaping</b> (Work may not commence sooner than October 1, 2025)	11/28/2025

### Liquidated Damages

- **\$1,500.00 per day** – For failure to achieve Substantial Completion
- **\$500.00 per day** - For failure to achieve milestone date(s)

# Procurement Details

## AVAILABILITY OF DOCUMENTS

### PBC Current Opportunities Page

<https://pbcchicago.com/opportunities/cdotwpa92nd106th107th114th/>

### Online Planroom

<https://www.x-rhodesplanroom.com/>

### Printer Contact Information

Cross Rhodes Print & Technologies

30 Eisenhower Lane North

Lombard, Illinois 60148

Contact Name: Kristy Weber

Telephone Number: (630) 963-4700

E-Mail: [orders@x-rhodes.com](mailto:orders@x-rhodes.com)

#### BOOK 1

- Introduction
- General Project Overview
- Submission Requirements

##### HIGHLIGHTS

- Bid Form
- MBE/WBE/EEO Goals
- Community Area Map

#### BOOK 2

- Standard Terms and Conditions for Contracts

#### BOOK 3

- Technical Specifications

+ CONSTRUCTION DRAWINGS

# Procurement Details

## AVAILABILITY OF DOCUMENTS

### Assist Agencies

<https://www.pbcchicago.com/doing-business/assist-agencies/>



**PUBLIC BUILDING COMMISSION OF CHICAGO'S ASSIST AGENCIES**

Assist Agencies are comprised of Chamber of Commerce and Not-for-Profit agencies that represent the interests of small, minority- and/or women-owned businesses. If your agency would like to be added to the PBC's Assist Agencies list, please send an email to [patricia.montenegro@pbcchicago.org](mailto:patricia.montenegro@pbcchicago.org)

<b>African American Contractors Association</b> 514 E. 95 <sup>th</sup> Street Chicago, IL 60619 Omar Shareef 312-446-5984 <a href="mailto:aacanatlassoc@gmail.com">aacanatlassoc@gmail.com</a> <a href="http://www.aacanatl.org">www.aacanatl.org</a>		<b>CANDO Corporation</b> 1633 S Michigan Ave Chicago, IL 60615 LaVerne Hall (312) 488-9338 <a href="mailto:LHall@candocorp.net">LHall@candocorp.net</a>
<b>Chatham Business Association: Small Business Development, Inc.</b> 800 E 78th St QGB Building Chicago, IL 60619 Melinda Kelly (773) 994-5006 <a href="mailto:melindakelly@cbaworks.org">melindakelly@cbaworks.org</a> <a href="http://cbaworks.org">cbaworks.org</a>	<b>Chicago Cook Workforce Partnership</b> 69 W Washington Street Suite 2860 Chicago, IL 60602 Claudia Cattouse <a href="mailto:ccattouse@chicookworks.org">ccattouse@chicookworks.org</a> <a href="http://chicookworks.org">chicookworks.org</a>	<b>Chicago Minority Supplier Development Council</b> 140 S. Dearborn Street Suite 1605 Chicago, IL 60603 Neda Sharp (312) 755-2554 <a href="mailto:nsharp@chicagomsdc.org">nsharp@chicagomsdc.org</a> <a href="http://chicagomsdc.org">chicagomsdc.org</a>
<b>Chicago Urban League</b> 4510 S Michigan Ave, 3rd Floor Chicago, IL 60653 Kelly Evans (773) 258-8500 <a href="mailto:kevans@chiul.org">kevans@chiul.org</a> <a href="http://chiul.org">chiul.org</a>	<b>Chicago Women in Trades</b> 2444 W 16th St Chicago, IL 60608 Jayne Vellinga (312) 942-1444 <a href="mailto:jvellinga@cwit2.org">jvellinga@cwit2.org</a> <a href="http://chicagowomenintrades2.org">chicagowomenintrades2.org</a>	<b>ConstructConnect</b> 3825 Edwards Road, #800 Cincinnati, OH 45209 Amanda Beyer (513) 458-5837, Extension 5108336 <a href="mailto:amanda.beyer@constructconnect.com">amanda.beyer@constructconnect.com</a> <a href="http://ConstructConnect.com">ConstructConnect.com</a>
<b>Construction Business Development Center at Prairie State College</b> 202 S Halsted St Chicago Heights, IL 60411 Cathy Svetanoff (708) 709-3568 <a href="mailto:csvetanoff@prairiestate.edu">csvetanoff@prairiestate.edu</a> <a href="http://prairiestate.edu">prairiestate.edu</a>	<b>Federation of Women Contractors</b> 8745 W. Higgins Road Suite 110 Chicago, IL 60631 Jaemie Neely (312) 360-1122 <a href="mailto:info@fwcchicago.com">info@fwcchicago.com</a> <a href="http://fwcchicago.com">fwcchicago.com</a>	<b>HIRE360 Chicago</b> 2540 S State Street Chicago, IL 60616 Deborah Whitaker (312) 575-2500 <a href="mailto:dwhitaker@hire360chicago.com">dwhitaker@hire360chicago.com</a> <a href="http://Hire360Chicago.com">Hire360Chicago.com</a>
<b>Hispanic American Construction Industry Association</b> 650 W Lake St, #415 Chicago, IL 60661 Ivette Trevino, (312) 575-0389 <a href="mailto:itrevino@haciaworks.org">itrevino@haciaworks.org</a> ; Cindy Patino, (773) 900-2095 <a href="mailto:cpatino@haciaworks.org">cpatino@haciaworks.org</a> ; <a href="mailto:ncintron@haciaworks.org">ncintron@haciaworks.org</a> <a href="http://haciaworks.org">haciaworks.org</a>	<b>Illinois Black Chamber of Commerce</b> 411 Hamilton Blvd, #1404 Peoria, IL 61602 Larry Ivory & Janis Ivory (309) 740-4430 <a href="mailto:larryivory@illinoisblackchamber.org">larryivory@illinoisblackchamber.org</a> ; <a href="mailto:jivory@ibcc.org">jivory@ibcc.org</a> <a href="http://illinoisblackchamber.org">illinoisblackchamber.org</a>	<b>Rainbow/PUSH Coalition</b> 930 E 50th St Chicago, IL 60615 John Mitchell (773) 256-2766 <a href="mailto:jmitchell@rainbowpush.org">jmitchell@rainbowpush.org</a> <a href="http://rainbowpush.org">rainbowpush.org</a>
<b>South Shore Chamber, Inc.</b> 1750 E 71st St Chicago, IL 60649 Tonya Trice (773) 955-9508 <a href="mailto:ttrice@southshorechamberinc.org">ttrice@southshorechamberinc.org</a> <a href="http://southshorechamberinc.org">southshorechamberinc.org</a>		<b>U.S. Minority Contractors Association</b> 1250 Grove Ave, #200 Barrington, IL 60010 Larry Bullock (847) 852-5010 <a href="mailto:larry.bullock@usminoritycontractors.org">larry.bullock@usminoritycontractors.org</a> <a href="http://usminoritycontractors.org">usminoritycontractors.org</a>
<b>Women's Business Development Center</b> 8 S Michigan Ave, #400 Chicago, IL 60603 Donna Beasley (312) 853-3477 <a href="mailto:dbeasley@wbdc.org">dbeasley@wbdc.org</a> <a href="http://wbdc.org">wbdc.org</a>		<b>Women Construction Owners &amp; Executives</b> 308 Circle Ave Forest Park, IL 60130 Mary Kay Monaghan (312) 613-1139 <a href="mailto:mkm@mkmservices.com">mkm@mkmservices.com</a> <a href="http://wcoesa.org">wcoesa.org</a>

## TECH REVIEW MEETING

### Date/Time

June 13, 2025 at 11:30 a.m.

(Immediately following this meeting)

## SITE VISIT

None has been scheduled.

### Notwithstanding

- Failure of the Bidders to become familiar with the Project shall not relieve or alter the Bidder's responsibility for completing the Work as required by the Contract Documents.

# Procurement Details

## REQUEST FOR INFORMATION (RFI'S)

### Sole Point of Contact

Dee Taylor, Contract Officer

[dee.taylor@cityofchicago.org](mailto:dee.taylor@cityofchicago.org)

### Deadline

Current: June 24, 2025 by 4:00 p.m.

### Addenda

None issued to date

# Procurement Details

## BID DUE DATE/TIME

### Due Date/Time

Tuesday, July 1, 2025, at 11:00 a.m.

*(Subject to Change via Addendum)*

### Virtual Meeting Details

**NOTE:** The Bid Opening will be streamed **LIVE** and will be **RECORDED** and **AVAILABLE** on our website for viewing on PBC's Home Page [www.pbcchicago.com](http://www.pbcchicago.com) and on the Current Opportunity page for this project found here: <https://pbcchicago.com/opportunities/cdotwpa92nd106th107th114th/>

## BID SUBMISSION REQUIREMENTS

### Electronic Submission

**ONE (1) EMAIL, that includes the following three (3) documents:**

**One** complete copy of bid document

- Original Signatures ([blue ink](#)) or Digital Signature
- Include Bid Bond
- PDF document should be a searchable PDF document and **not a scanned copy**, with the exception of documents only available as a copy.. (e.g. copies of licenses)

**One** complete copy of **Master Bid Form document in PDF format**

**One** complete copy of **Master Bid Form document in EXCEL format**

**Email to:** [dee.taylor@cityofchicago.org](mailto:dee.taylor@cityofchicago.org) **AND** [pbc-procurement@cityofchicago.org](mailto:pbc-procurement@cityofchicago.org)

### If Hardcopy Submission Needed

- *Bidders who are unable to submit their bids electronically may request instruction for submitting a “hard copy” of their bid in writing to the Dee Brookens at: [dee.taylor@cityofchicago.org](mailto:dee.taylor@cityofchicago.org)*

## PRE-AWARD MEETING

### Date/Time

Friday, July 2, 2025 at 9:30 a.m. (Virtual)

(Subject to Change via Addendum)

### **The Lowest Responsive and Responsible Bidder shall be required to:**

- Have, at minimum, the Project Executive, Project Manager (if known), and Cost Estimator in attendance
- Invite principals of all MBE/WBE Subcontractors listed on Schedule D
- Provide and be prepared to discuss the Schedule of Values (if applicable) for the project
- Provide a list of Pre-Award meeting attendees in advance of the meeting

## NOTICE OF AWARD

### Anticipated Schedule

- Anticipated release of the Notice of Award (NOA) is [July 2025](#) following the PBC Board of Commissioners Meeting
- Successful General Contractor will be required to provide compliant Certificate of Insurance and Payment and Performance Bond within 7 days of NOA issuance



# Book 1 & 2 Highlights

# Highlights

## Budget, Staffing, and Additional Requirements

- Estimated Construction Budget (Book 1, Page 2) – \$7,200,000 - \$7,300,000
- Mandatory Project Staffing (Book 1, Page 3)
- Scheduling Software Requirements (Book 1, Page 4)
- Liquidated Damages (Book 1, Page 4)
- Prevailing Wage Rates (Book 1, Page 5 and Page 47)

# Highlights

## Joint Venture Opportunities

- Schedule B – Joint Venture Affidavit
- (Book 1, Page 32)
  - ❖ JV Agreement
  - ❖ Certification Letter

### SCHEDULE B - Joint Venture Affidavit (1 of 3)

*This form is not required if all joint venturers are MBE/Non-MBE or WBE/Non-WBE firms. In such case, however, a written joint venture agreement among the MBE/Non-MBE or WBE/Non-WBE firms should be submitted. Each MBE/WBE joint venturer must also attach a copy of their current certification letter.*

A. Name of joint venture \_\_\_\_\_

B. Address of joint venture \_\_\_\_\_  
\_\_\_\_\_

C. Phone number of joint venture \_\_\_\_\_

D. Identify the firms that comprise the joint venture

1. Describe the role(s) of the MBE/WBE firm(s) in the joint venture. (Note that a "clearly defined portion of work" must here be shown as under the responsibility of the MBE/WBE firm.)

2. Describe very briefly the experience and business qualifications of each non-MBE/WBE joint venturer.

E. Nature of joint venture's business

F. Provide a copy of the joint venture agreement.

G. Ownership: What percentage of the joint venture is claimed to be owned by MBE/WBE? \_\_\_\_\_ %

H. Specify as to:

1. Profit and loss sharing \_\_\_\_\_ %

2. Capital contributions, including equipment \_\_\_\_\_ %

3. Other applicable ownership interests, including ownership options or other agreements which restrict ownership or control.

# Highlights

## THE BID FORM

<b>PROJECT NAME:</b>	Chicago Department of Transportation Works Progress Administration ("WPA") Street Reconstruction		
<b>LOCATION:</b>	W. 92nd St./W. 106th St./W. 107th St./W. 114th St.		
<b>CONTRACT NO:</b>	C1625		
<b>PROJECT NO(S):</b>	22837		
<b>FIRM NAME:</b>			
<b>BID FORM</b>			
<small>Bidders MUST use the exact formulas to calculate their bids from the data provided in the following table.  <a href="https://www.x-rhodesplanroom.com/">(https://www.x-rhodesplanroom.com/)</a> or the  PBC Website (<a href="https://www.pbcchicago.com/">https://www.pbcchicago.com/</a>) to ensure accurate calculations for the Total Base Bid and Total Award  Criteria.</small>			
W. 92nd St.	<b>LINE</b>	<b>DESCRIPTION</b>	<b>AMOUNT</b>
		W. 92nd Street	
	1	Base Work Only	\$ -
	2	Commission's Contract Contingency	\$ 147,000.00
	3	Sitework Allowance	\$ 25,000.00
	4	<b>TOTAL BASE BID</b>	<b>\$ 172,000.00</b>
Accepted by the Commission			<input type="checkbox"/>
W. 106th St.	<b>LINE</b>	<b>DESCRIPTION</b>	<b>AMOUNT</b>
		W. 106th St.	
	5	Base Work Only	\$ -
	6	Commission's Contract Contingency	\$ 367,000.00
	7	Sitework Allowance	\$ 25,000.00
	8	<b>TOTAL BASE BID</b>	<b>\$ 392,000.00</b>
Accepted by the Commission			<input type="checkbox"/>
W. 107th St.	<b>LINE</b>	<b>DESCRIPTION</b>	<b>AMOUNT</b>
		W. 107th St.	
	9	Base Work Only	\$ -
	10	Commission's Contract Contingency	\$ 245,000.00
	11	Sitework Allowance	\$ 25,000.00
	12	<b>TOTAL BASE BID</b>	<b>\$ 270,000.00</b>
Accepted by the Commission			<input type="checkbox"/>
W. 114th St.	<b>LINE</b>	<b>DESCRIPTION</b>	<b>AMOUNT</b>
		W. 114th St.	
	13	Base Work Only	\$ -
	14	Commission's Contract Contingency	\$ 347,000.00
	15	Sitework Allowance	\$ 25,000.00
	16	<b>TOTAL BASE BID</b>	<b>\$ 372,000.00</b>
Accepted by the Commission			<input type="checkbox"/>
	<b>LINE</b>	<b>DESCRIPTION</b>	<b>TOTAL AMOUNTS</b>
	17	<b>GRAND TOTAL BASE BID - ALL STREETS (Total of Lines 4, 8, 12 and 16)</b>	<b>\$ 1,206,000.00</b>
	18	<b>GRAND TOTAL AWARD CRITERIA FIGURE - ALL STREETS</b>	<b>\$ 1,206,000.00</b>

# Highlights

## THE BID FORM

The screenshot displays a bid form interface. At the top, there is a section titled "SURETY INFORMATION" with input fields for "Name:" and "Address:". Below this is a section titled "BIDDER'S INFORMATION" with input fields for "Firm Name:" and "Date:". At the bottom, there is a horizontal navigation bar with several tabs: "Master Bid Tab" (underlined in green), "Award Criteria Figure", "W. 92nd St." (dark purple), "W. 106th St." (teal), "W. 107th St." (orange), "W. 114th St." (green), and a "+" icon. A large grey arrow points from the bottom of the navigation bar towards the text below.

**Each Street has a separate tab  
(4 TOTAL)**

**Enter your unit pricing for FOUR (4) Streets**

**The Master Bid Form will automatically populate and TOTAL**

# Highlights

## THE BID FORM – SCHEDULE OF PRICES

SCHEDULE OF PRICES						
CHICAGO DEPARTMENT OF TRANSPORTATION WORKS PROGRESS ADMINISTRATION ("WPA") STREET RECONSTRUCTION						
LOCATION: W. 92nd St. (from S. Leavitt St. to S. Hamilton Ave.)						
CDOT PROJECT NO.: B-4-305 PBC PROJECT NO.: 22837						
PBC CONTRACT: C1625						
Bidder's pricing for each line item should carry its share of the costs of work, plus its share of overhead and profit. Bidders should avoid nominal pricing for some lines and enhanced pricing for other lines.						
Bids that the PBC considers to be materially unbalanced will be rejected.						
Line	Code Number	Description	Unit	Estimated Quantity	Unit Price	Cost
1	20100110	TREE REMOVAL (6 TO 15 UNITS DIAMETER)	UNIT	15	\$	-
2	20100210	TREE REMOVAL (OVER 15 UNITS DIAMETER)	UNIT	0	\$	-
3	2010100C	TREE PROTECTION	EACH	15	\$	-
4	20101210C	ROOT PRUNING	FOOT	278	\$	-
5	20200100	EARTH EXCAVATION	CU YD	524	\$	-
6	20220200C	EARTH EXCAVATION (SOIL TO CDDO FACILITY)	CU YD	298	\$	-
7	20700220C	POROUS GRANULAR EMBANKMENT, SUBGRADE	CU YD	36	\$	-
8	20800150	TRENCH BACKFILL	CU YD	60	\$	-
9	20820200C	TRENCH BACKFILL, WATERMAIN	CU YD	0	\$	-
10	21101615	TOPSOIL FURNISH AND PLACE, 4"	SQ YD	646	\$	-
11	251K0100C	SHREDDED HARDWOOD BARK MULCH	SQ YD	21	\$	-
12	25200110	SODDING, SALT TOLERANT	SQ YD	646	\$	-
13	253T0018C	TREE, ORNAMENTAL, 2.5" - 3.0" CALIPER, BALLED AND BURLAPPED	EACH	0	\$	-
14	253T0028C	TREE, SHADE, 2.5" - 3.0" CALIPER, BALLED AND BURLAPPED	EACH	1	\$	-
15	28000510	INLET FILTERS	EACH	4	\$	-
16	31101400	SUBBASE GRANULAR MATERIAL, TYPE B 6"	SQ YD	1173	\$	-
17	35300200	PORTLAND CEMENT CONCRETE BASE COURSE 7"	SQ YD	901	\$	-
18	40600290	BITUMINOUS MATERIALS (TACK COAT)	POUND	896	\$	-
19	40600525	LEVELING BINDER (HAND METHOD), N50	TON	2	\$	-
20	40600635	LEVELING BINDER (MACHINE METHOD), N50 1-1/2 INCH	TON	112	\$	-
21	40604060	HOT-MIX ASPHALT SURFACE COURSE, IL-9.5, MIX "D", N50	TON	149	\$	-
22	42001300	PROTECTIVE COAT	SQ YD	481	\$	-
23	42300400	PORTLAND CEMENT CONCRETE DRIVEWAY PAVEMENT, 8 INCH	SQ YD	145	\$	-
24	42400200C	PORTLAND CEMENT CONCRETE SIDEWALK 5 INCH	SQ FT	630	\$	-
25	42400210C	PORTLAND CEMENT CONCRETE ADA RAMP 5 INCH	SQ FT	614	\$	-
85	81020300C	TRENCH AND BACKFILL WITH SCREENINGS	FOOT	150	\$	-
86	81120210C	CONDUIT RISER ATTACHED TO POLE, 2"	EACH	1	\$	-
87	81420120C	HANDHOLE, ELECTRIC, WITH 24" FRAME AND COVER	EACH	1	\$	-
88	81420400C	CLEAN EXISTING CITY MANHOLE OR HANDHOLE	EACH	0	\$	-
89	81420500C	DRILL EXISTING ELECTRIC HANDHOLE OR MANHOLE	EACH	0	\$	-
90	81720220C	ELECTRIC CABLE IN CONDUIT, TRIPLEX, 2-1/2" NO. 6, TRC NO. 6	FOOT	675	\$	-
91	81800320	AERIAL CABLE, 3-1/2" NO. 4 WITH MESSENGER WIRE	FOOT	370	\$	-
92	81820120C	RACK, SECONDARY AERIAL 3 WIRE	EACH	2	\$	-
93	82120300C	LUMINAIRE, LED, ACORN, ARTERIAL, RESIDENTIAL	EACH	3	\$	-
94	82120860C	LUMINAIRE, LED, COBRA HEAD, RESIDENTIAL	EACH	3	\$	-
95	82121300C	LUMINAIRE NODE, INTERNAL	EACH	3	\$	-
96	82520200C	CONTROLLER, STREET LIGHTING, POLE MOUNTED, CONSTANT POWER, 1-PHASE, 120/240V, 60A	EACH	1	\$	-
97	83000023C	LIGHT POLE, ALUMINUM, DAVIT, 18 FT. M.H., 8 FT. DAVIT ARM	EACH	3	\$	-
98	83620210C	LIGHT POLE FOUNDATION, METAL, 10" BOLT CIRCLE, 8 5/8" X 5'	EACH	4	\$	-
99	84400105	RELOCATE EXISTING LIGHTING UNIT	EACH	1	\$	-
100	89520100C	REMOVE EXISTING STREET LIGHTING EQUIPMENT	L SUM	900	\$	-
101	89521100C	BREAKDOWN CONCRETE FOUNDATION, LIGHT POLE	EACH	2	\$	-
102	999X0700C	RAILROAD PROTECTIVE LIABILITY INSURANCE	L SUM	0	\$	-
103	999X0900C	DRILL AND GROUT DOWEL AND TIE BARS	EACH	315	\$	-
104		TOTAL FOR 22837/B-4-305 - W. 92nd St.				

Enter your unit pricing HERE

Sheet will automatically TOTAL HERE



# Highlights

## THE BID FORM – MASTER BID TOTAL & ADDT'L INFO

LINE	DESCRIPTION	TOTAL AMOUNTS
17	GRAND TOTAL BASE BID - ALL STREETS (Total of Lines 4, 8, 12 and 16)	\$ 1,206,000.00
18	GRAND TOTAL AWARD CRITERIA FIGURE - ALL STREETS	\$ 1,206,000.00

SURETY INFORMATION	
Name:	
Address:	

BIDDER'S INFORMATION	
Firm Name:	
Date:	

Enter your Surety & Firm Information in their respective sections

The TOTALS from ALL locations will automatically populate HERE

# Highlights

**PROJECT NAME:** Chicago Department of Transportation Works Progress Administration ("WPA") Street Reconstruction  
**LOCATION:** W. 92nd St./W. 106th St./W. 107th St./W. 114th St.  
**CONTRACT NO:** C1625  
**PROJECT NO(S):** 22837

## AWARD CRITERIA FIGURE FORMULA

	FORMULA
<b>Line 1. (Based on Grand Total Base Bid)</b>	<b>\$1,206,000.00</b>
Line 2. Minority Journeyman (Maximum figure 0.70)	
Line 3. Multiply Line 2 by Line 1 by 0.04	\$0.00
	\$1,206,000.00
Line 4. Minority Apprentice (Maximum figure 0.70)	
Line 5. Multiply Line 4 by Line 1 by 0.03	\$0.00
	\$1,206,000.00
Line 6. Minority Laborer (Maximum figure 0.70)	
Line 7. Multiply Line 6 by Line 1 by 0.01	\$0.00
	\$1,206,000.00
Line 8. Female Journeyman (Maximum figure 0.15)	
Line 9. Multiply Line 8 by Line 1 by 0.04	\$0.00
	\$1,206,000.00
Line 10. Female Apprentice (Maximum figure 0.15)	
Line 11. Multiply Line 10 by Line 1 by 0.03	\$0.00
	\$1,206,000.00
Line 12. Female Laborer (Maximum figure 0.15)	
Line 13. Multiply Line 12 by Line 1 by 0.01	\$0.00
	\$1,206,000.00
Line 14. Total of Lines 3, 5, 7, 9, 11, and 13	\$0.00
Line 15. Total Award Criteria	\$1,206,000.00
<b>TOTAL AWARD CRITERIA (Line 15)</b>	<b>\$1,206,000.00</b>

Page 1

# AWARD CRITERIA FIGURE

Accepted by the Commission

### BIDDER'S INFORMATION

Firm Name:

Date:

### NOTES/INSTRUCTIONS



## BASIS OF AWARD

(Book 1, Page 8)

- Award will be made to the Responsible Bidder submitting the **Lowest Grand Total Award Criteria Figure (Line 18 of Bid Form)** whose corresponding Grand Total Base Bid (Line 17 of Bid Form) is within the Available Funds for each street/avenue and is otherwise responsive to all requirements of the Contract Documents.
- Firms are required to **fill out the entire BID FORM** to be considered responsive.
- The Commission reserves the right to reject any and all bids wherever such rejection is in the best interest of the Commission.
- Bids that the PBC considers to be materially unbalanced will be rejected.



# Compliance

# Compliance

## MBE/WBE PARTICIPATION

### MBE/WBE Goals

26%, MBE

6%, WBE

### MBE/WBE Certifications

- City of Chicago
- Cook County

### MBE/WBE Special Conditions

Book 2, Article 23

#### Compliance: Certification

PBC ensures that only certified and experienced firms perform the required services.

**MBE or WBE firms must be certified with the City of Chicago and/or Cook County to be counted as an MBE/WBE firm by the PBC.**



## Award Criteria Figure

Maximum **70%**

Minority Journeyworker,  
Apprentice, and;  
Laborer

Maximum **15%**

Female Journeyworker,  
Apprentice, and;  
Laborer

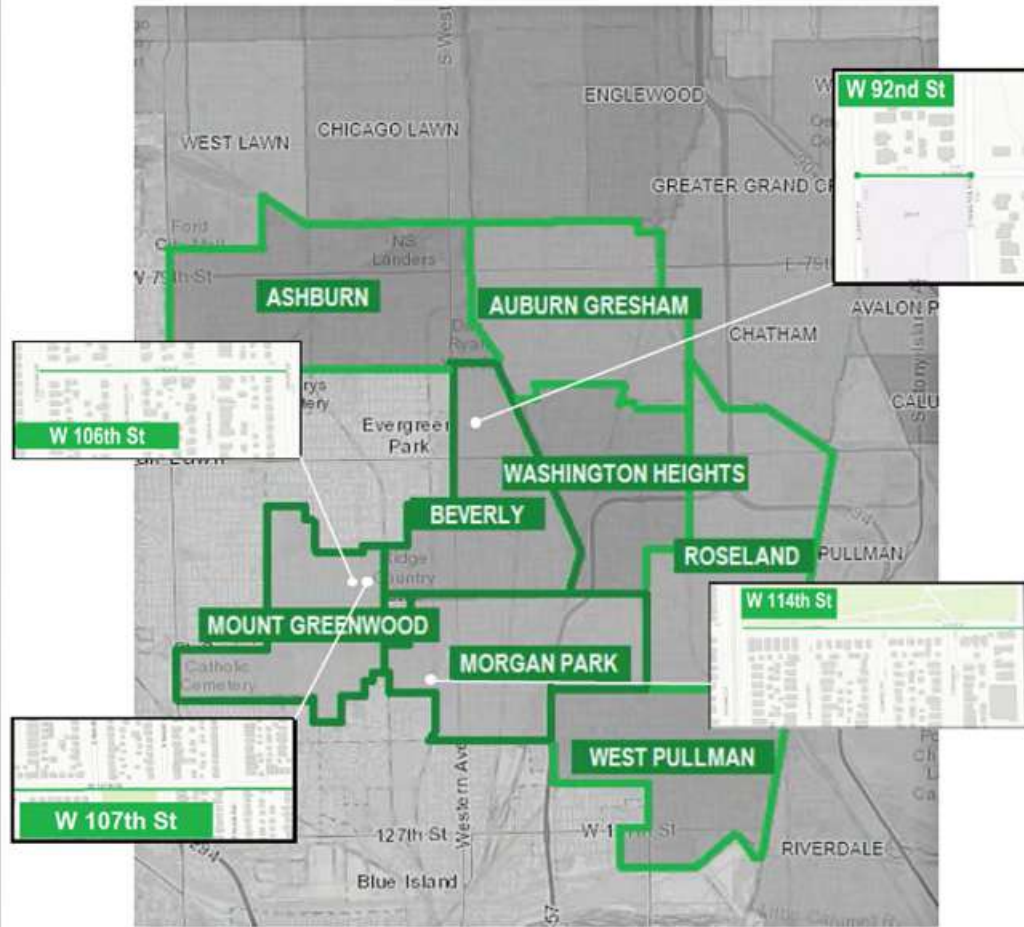
## City Residency & Community Hiring

PBC encourages the creation of career opportunities for residents of a project's surrounding community areas, both in the construction trades as well as skilled and unskilled workers.

- ☑ **Community hiring requirement:** at least 7.5% of project labor performed by community residents
- ☑ **City residency requirement:** at least **50%** of project labor performed by residents of the city of Chicago



# Compliance



Works Progress Administration ("WPA") Street Reconstruction (W 92nd St, W 106th St, W 107th St and W 114th St)

- Project Locations
- Project Area
- Community Areas

Project locations:  
W 92nd St from S Leavitt St to S Hamilton Ave  
W 106th St from S Christiana Ave to S Kedzie Ave  
W 107th St from S Spaulding Ave to S Kedzie Ave  
W 114th St from S Rockwell St to S Western Ave

## Community Hiring MAP

## MBE/WBE COMPLIANCE

### Documentation and Monitoring

- B2Gnow: MBE/WBE Compliance monitoring
- Established Business, Manufacturers, Suppliers, and Brokers
- Schedule D
- Schedule C

# Compliance

## PUBLIC BUILDING COMMISSION OF CHICAGO

### SCHEDULE D - Affidavit of General Contractor Regarding MBE/WBE Participation (1 of 2)

Name of Project: \_\_\_\_\_

STATE OF ILLINOIS    }  
                                  } SS  
COUNTY OF COOK    }

In connection with the above-captioned contract, I HEREBY DECLARE AND AFFIRM that I am the

\_\_\_\_\_ Title and duly authorized representative of

\_\_\_\_\_ Name of General Contractor whose address is

\_\_\_\_\_ in the City of \_\_\_\_\_, State of \_\_\_\_\_

and that I have personally reviewed the material and facts submitted with the attached Schedules of MBE/WBE participation in the above-referenced Contract, including Schedule C and Schedule B (if applicable), and the following is a statement of the extent to which MBE/WBE firms will participate in this Contract if awarded to this firm as the Contractor for the Project.

Name of MBE/WBE Contractor	Type of Work to be Done in Accordance with Schedule C	Dollar Credit Toward MBE/WBE Goals	
		MBE	WBE
		\$	\$
		\$	\$
		\$	\$
		\$	\$
		\$	\$
		\$	\$
		\$	\$
		\$	\$
		\$	\$
<b>Total Net MBE/WBE Credit</b>		\$	\$
<b>Percent of Total Base Bid</b>		%	%

The General Contractor may count toward its MBE/WBE goal a portion of the total dollar value of a contract with a joint venture equal to the percentage of the ownership and control of the MBE/WBE partner.

# Schedule D

## PUBLIC BUILDING COMMISSION OF CHICAGO

### SCHEDULE D - Affidavit of General Contractor Regarding MBE/WBE Participation (2 of 2)

The Undersigned will enter into a formal agreement for the above work with the above-referenced MBE/WBE firms, conditioned upon performance as Contractor of a Contract with the Commission, and will do so within five (5) business days of receipt of a notice of Contract award from the Commission.

Additionally, the Undersigned certifies to the best of its knowledge and belief that it, its principals and any subcontractors used in the performance of this contract, meet the Agency requirements and have not violated any City or Sister Agency policy, codes, state, federal or local laws, rules or regulations and have not been subject to any debarment, suspension or other disciplinary action by any government agency. Additionally, if at any time the Contractor becomes aware of such information, it must immediately disclose it to the Commission.

BY:

\_\_\_\_\_ Name of Contractor (Print)

\_\_\_\_\_ Date

\_\_\_\_\_ Phone

IF APPLICABLE:

BY:

\_\_\_\_\_ Joint Venture Partner (Print)

\_\_\_\_\_ Date

\_\_\_\_\_ Phone/FAX

\_\_\_\_\_ Signature

\_\_\_\_\_ Name (Print)

\_\_\_\_\_ Signature

\_\_\_\_\_ Name (Print)

MBE \_\_\_ WBE \_\_\_ Non-MBE/WBE \_\_\_



# Compliance

## Schedule C

### PUBLIC BUILDING COMMISSION OF CHICAGO

#### SCHEDULE C - Letter of Intent from MBE/WBE (1 of 2) To Perform As Subcontractor, Subconsultant, and/or Material Supplier

Name of Project: \_\_\_\_\_

Project Number: \_\_\_\_\_

FROM:

\_\_\_\_\_ MBE \_\_\_\_\_ WBE \_\_\_\_\_  
(Name of MBE or WBE)

TO:

\_\_\_\_\_ and Public Building Commission of Chicago  
(Name of Bidder)

The undersigned intends to perform work in connection with the above-referenced project as (check one):

\_\_\_\_\_ a Sole Proprietor                      \_\_\_\_\_ a Corporation  
\_\_\_\_\_ a Partnership                              \_\_\_\_\_ a Joint Venture

The MBE/WBE status of the undersigned is confirmed by the attached Letter of Certification, dated \_\_\_\_\_. In addition, in the case where the undersigned is a Joint Venture with a non-MBE/WBE firm, a Schedule B, Joint Venture Affidavit, is provided.

The undersigned is prepared to provide the following described services or supply the following described goods in connection with the above-named project.

\_\_\_\_\_  
\_\_\_\_\_  
\_\_\_\_\_

The above-described services or goods are offered for the following price, with terms of payment as stipulated in the Contract Documents.

\_\_\_\_\_  
\_\_\_\_\_  
\_\_\_\_\_

### PUBLIC BUILDING COMMISSION OF CHICAGO

#### SCHEDULE C - Letter of Intent from MBE/WBE (2 of 2) To Perform As Subcontractor, Subconsultant, and/or Material Supplier

##### PARTIAL PAY ITEMS

For any of the above items that are partial pay items, specifically describe the work and subcontract dollar amount:

\_\_\_\_\_  
\_\_\_\_\_  
\_\_\_\_\_

If more space is needed to fully describe the MBE/WBE firm's proposed scope of work and/or payment schedule, attach additional sheet(s).

##### SUB-SUBCONTRACTING LEVELS\*

\_\_\_\_\_ % of the dollar value of the MBE/WBE subcontract will be sublet to non-MBE/WBE contractors.

\_\_\_\_\_ % of the dollar value of the MBE/WBE subcontract will be sublet to MBE/WBE contractors.

**\*If MBE/WBE subcontractor will not be sub-subcontracting any of the work described in this Schedule, a zero (0) must be filled in each blank above. If more than 10% percent of the value of the MBE/WBE subcontractor's scope of work will be sublet, a brief explanation and description of the work to be sublet must be provided.**

The Undersigned (Contractor) will enter into a formal agreement for the above work with the Bidder, conditioned upon its execution of a contract with the Public Building Commission of Chicago, and will do so within five (5) working days of receipt of a notice of Contract award from the Commission.

Additionally, the Undersigned certifies to the best of its knowledge and belief that it, its principals and any subcontractors used in the performance of this contract, meet the Agency requirements and have not violated any City or Sister Agency policy, codes, state, federal or local laws, rules or regulations and have not been subject to any debarment, suspension or other disciplinary action by any government agency. Additionally, if at any time the Contractor becomes aware of such information, it must immediately disclose it to the Commission.

BY:

\_\_\_\_\_  
Name of MBE/WBE Firm (Print)

\_\_\_\_\_  
Date

\_\_\_\_\_  
Phone

IF APPLICABLE:  
BY:

\_\_\_\_\_  
Joint Venture Partner (Print)

\_\_\_\_\_  
Date

\_\_\_\_\_  
Phone

\_\_\_\_\_  
Signature

\_\_\_\_\_  
Name (Print)

\_\_\_\_\_  
Signature

\_\_\_\_\_  
Name (Print)

\_\_\_\_\_  
MBE \_\_\_\_\_ WBE \_\_\_\_\_ Non-MBE/WBE \_\_\_\_\_

# PBC CONTACT

**Dee Taylor**

[dee.taylor@cityofchicago.org](mailto:dee.taylor@cityofchicago.org)

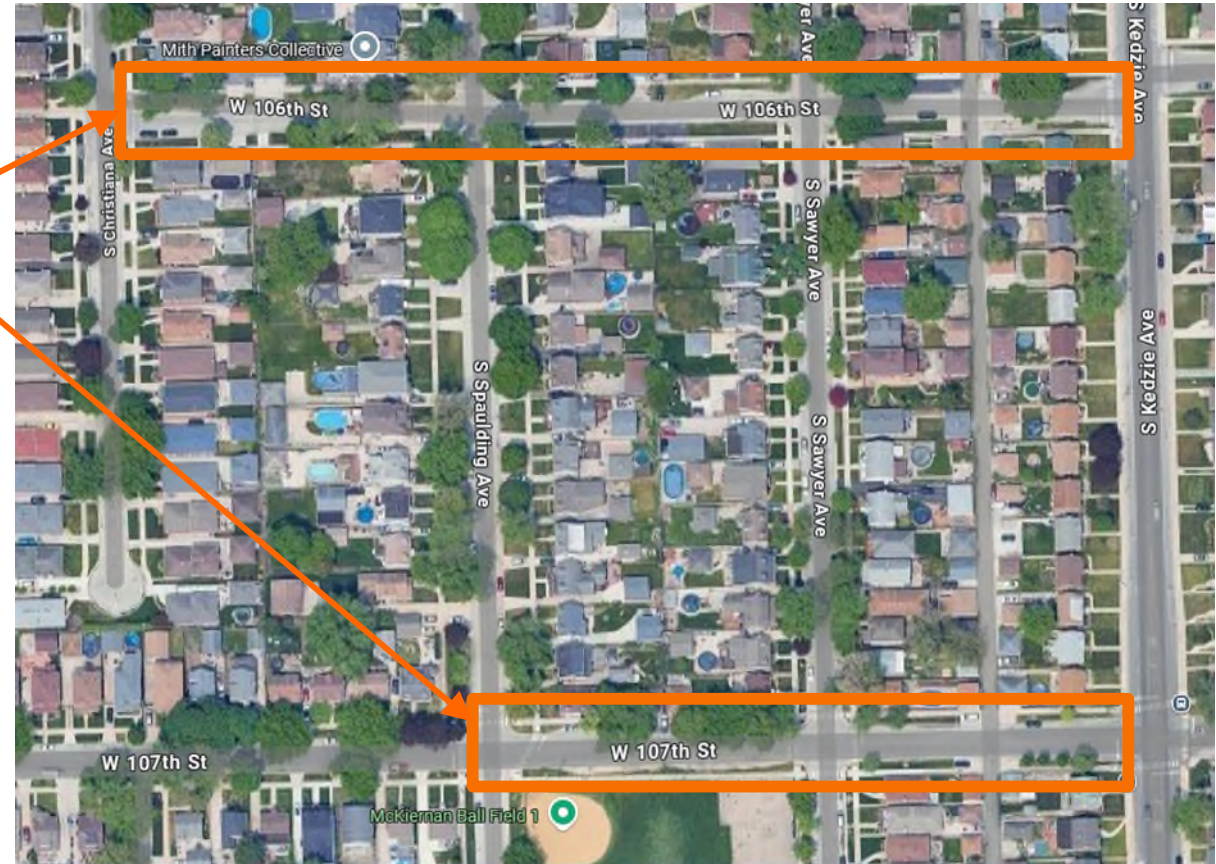
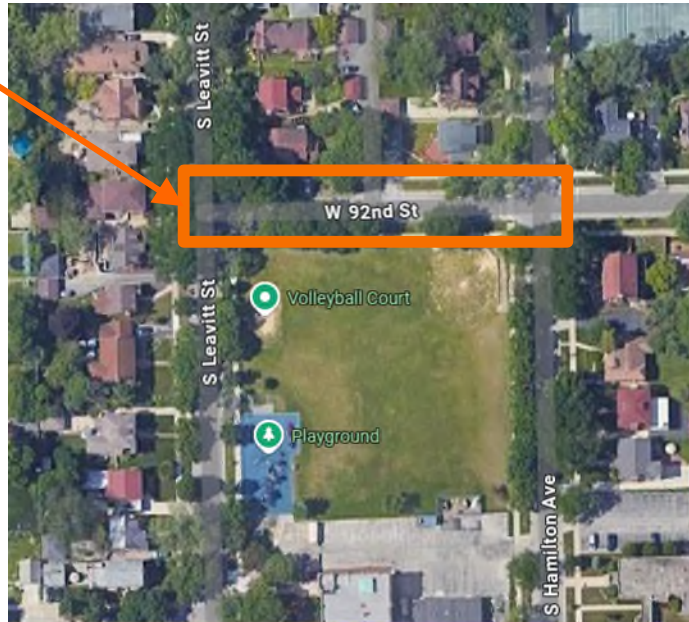


# Technical Review

# Project Overview

## Project Locations

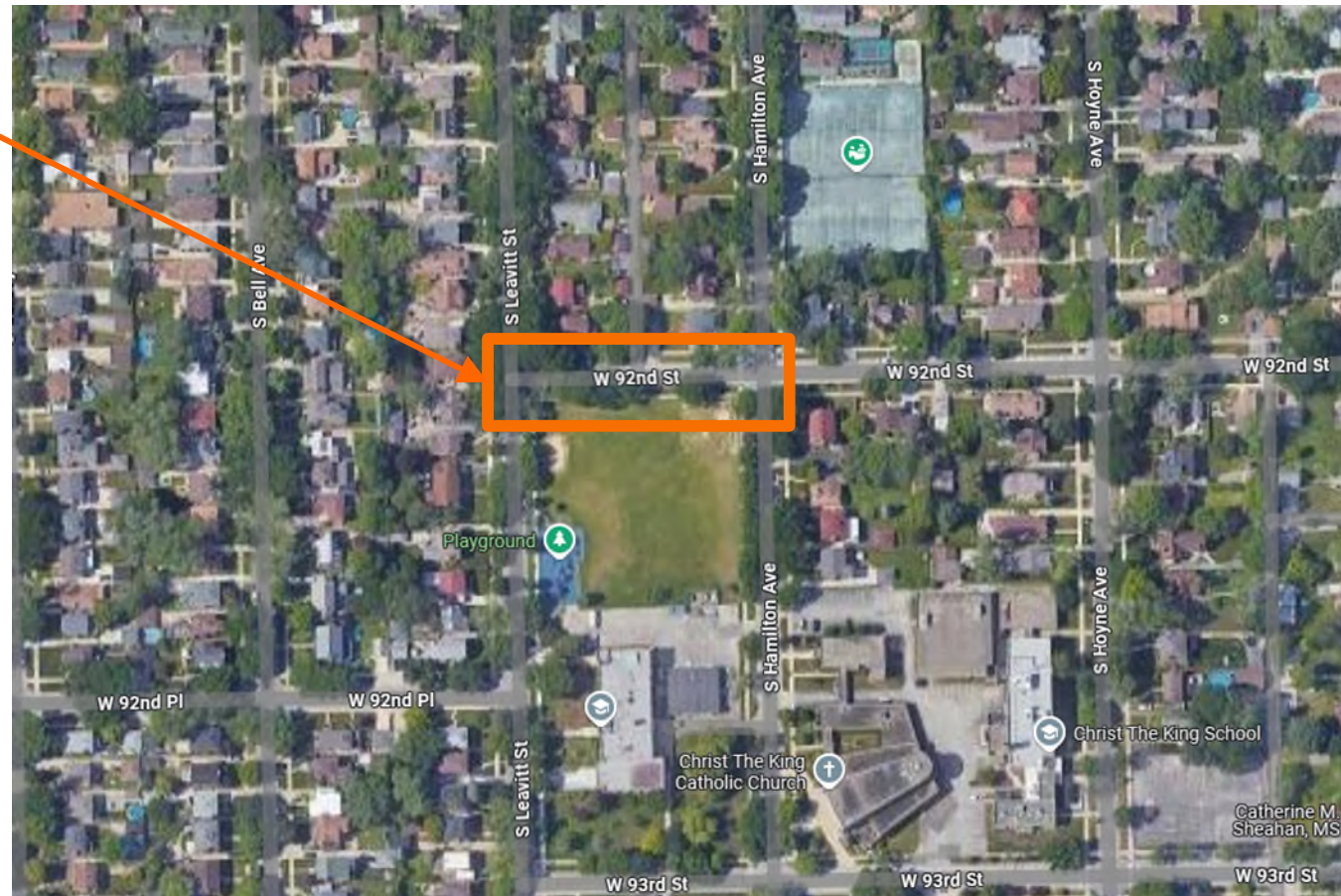
- **W 92<sup>nd</sup> St – S Leavitt St to S Hamilton Ave**
- **W 106<sup>th</sup> St – S Christiana Ave to S Kedzie Ave**
- **W 107<sup>th</sup> St – S Spaulding Ave to S Kedzie Ave**
- **W 114<sup>th</sup> St – S Rockwell St to S Western Ave**



# Project Overview

## Project Locations

- **W 92<sup>nd</sup> St – S Leavitt St to S Hamilton Ave**



## Project Overview

- **Existing Conditions**
- **Proposed Work**

# Existing Conditions

## Roadway

- Roadway width varies from 22'-32'
- 2 intersections
  - S. Leavitt Street
  - S. Hamilton Avenue



# Existing Conditions

## Concerns

- No curb and gutter
- Poor pavement condition
- Lack of curb and gutter leads to flooding on the street and on private property



# Existing Conditions

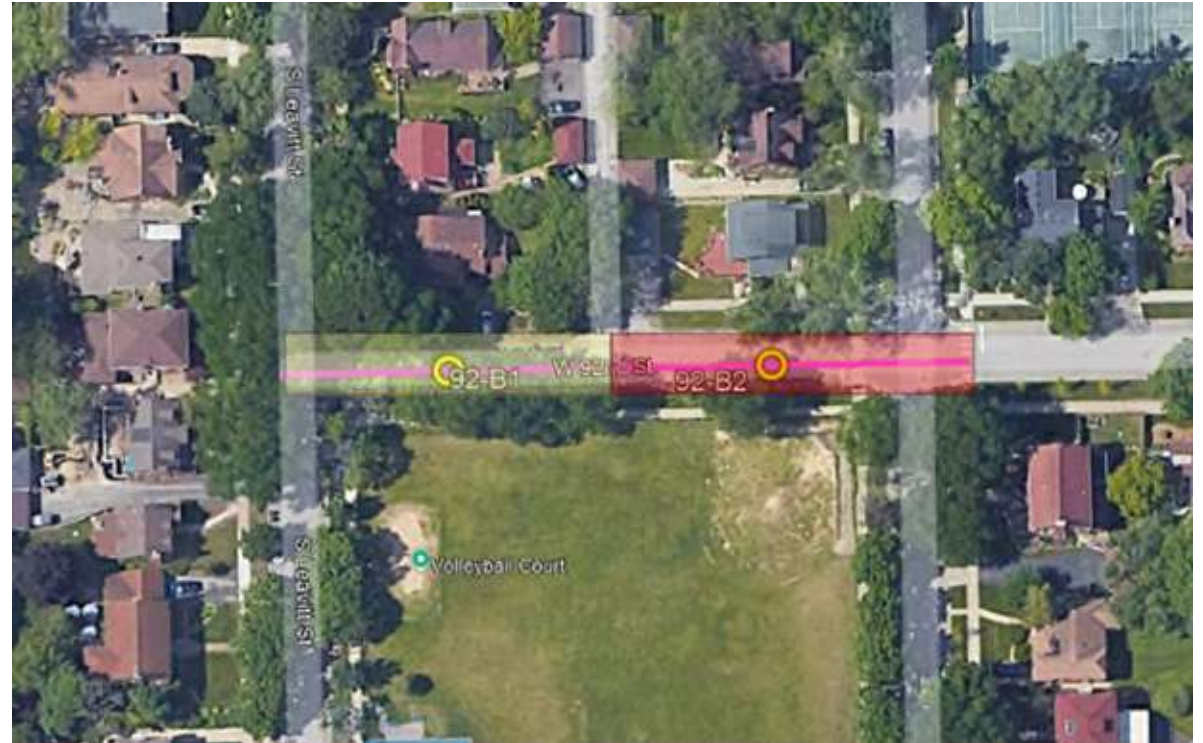
## Environmental





- Environmental report available in Book 3, Appendix C Part 1
- Soil Disposal Classification is Landfill as Non-Special Waste & CCDD

Table 5. Soil Disposal Classification

Soil Boring ID	Interval (ft bgs)	Classification	Parameter(s) exceeding the MAC(s)	Eligible for CCDD or USFO Disposal	Soil Disposal Classification
92-B1	0-5	669.05(a)(3)	Benzo(a)pyrene, benzo(b)fluoranthene, dibenz(a,h)anthracene	Yes	CCDD (except for non-populated and non-MSA counties)
92-B2	0-5	669.05(a)(5)	Benzo(a)pyrene, arsenic, and chromium	No	Landfill as Non-Special Waste (NSW)

Note: Shaded cells represent CCDD Exclusion Areas



-  Boring Location
-  CCDD (unrestricted)
-  CCDD (except for non-populated)
-  Landfill Non-Special Waste



# Proposed Conditions

## Drainage

- Install four catch basins
- Install 72' of 8" DIP sewer laterals

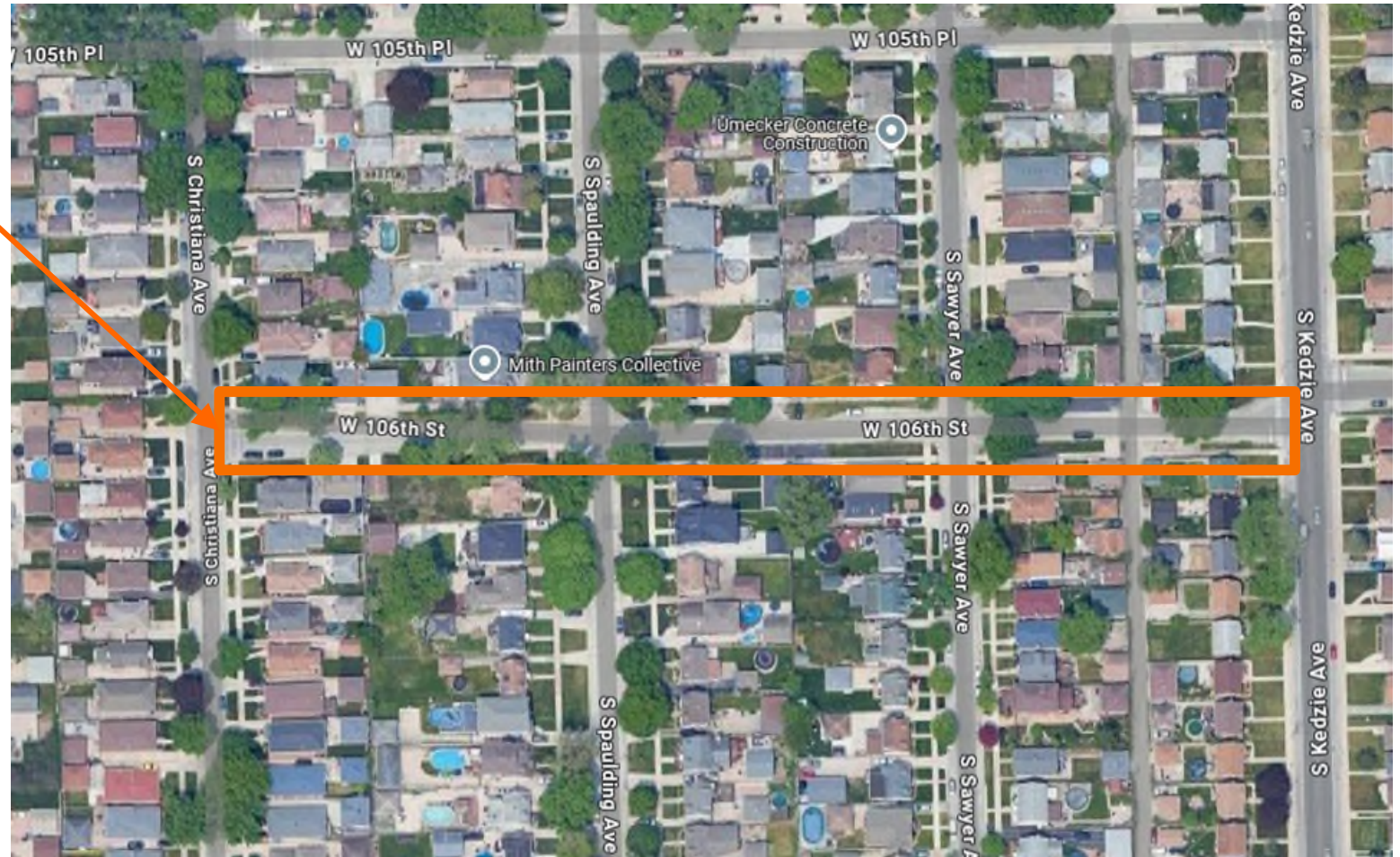
## PROPOSED DRAINAGE STRUCTURES

CATCH BASINS (TYP.)  
3" VORTEX RESTRICTOR  
W/ SWIRL CHAMBER  
TYPE A, 4' DIA

# Project Overview

## Project Locations

- **W 106<sup>th</sup> St – S Christiana Ave to S Kedzie Ave**



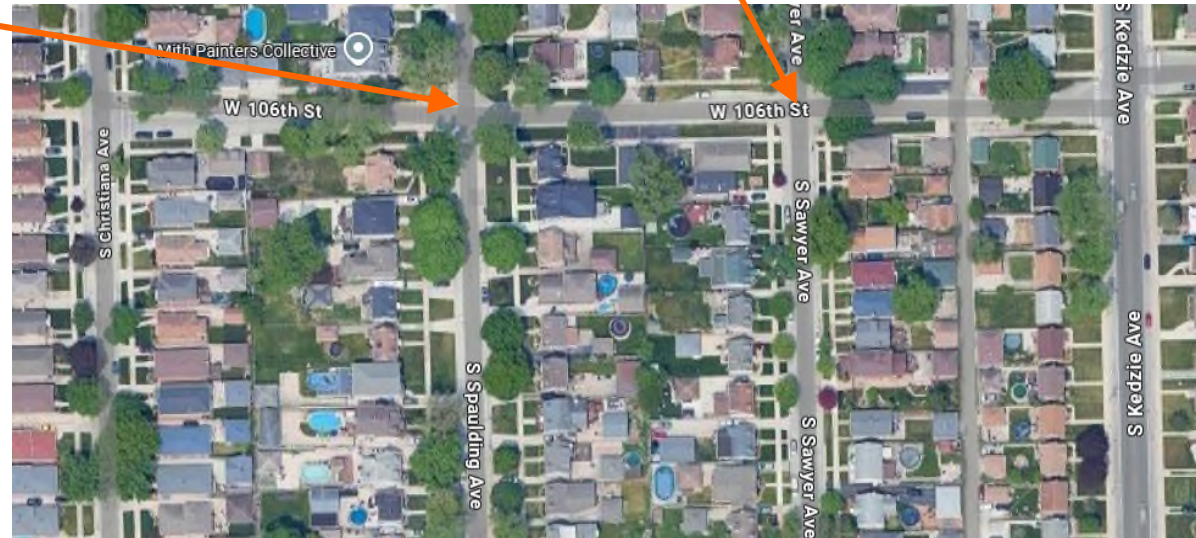
## Project Overview

- **Existing Conditions**
- **Proposed Work**

# Existing Conditions

## Roadway

- Roadway width varies from 22'-29'
- 2 intersections
  - S. Spaulding Avenue
  - S. Sawyer Avenue



# Existing Conditions

## Concerns

- No curb and gutter
- Lack of curb and gutter leads to flooding on the street and on private property



# Existing Conditions

## Environmental

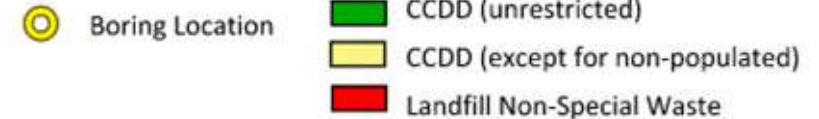
- Environmental report available in Book 3, Appendix C Part 2
- Soil Disposal Classification is Landfill as Non-Special Waste & CCDD



Soil Disposal Summary

Soil Boring ID	Interval (ft bgs)	Classification	Parameter(s) exceeding the MAC(s)	Eligible for CCDD or USFO Disposal	Soil Disposal Classification
106-B1	0-5	669.05(a)(3)	Benzo(a)pyrene	Yes	CCDD (except for non-populated)
106-B2	0-5	Unrestricted	None	Yes	CCDD (unrestricted)
106-B3	0-5	669.05(a)(3)	Benzo(a)pyrene	Yes	CCDD (except for non-populated)
106-B4	0-5	669.05(a)(5)	Benzo(a)pyrene, arsenic, pH	No	Landfill as Non-Special Waste (NSW)
106-B5	0-5	669.05(a)(5)	Benzo(a)pyrene, arsenic, chromium, and mercury (CW inhal.)	No	Landfill as NSW

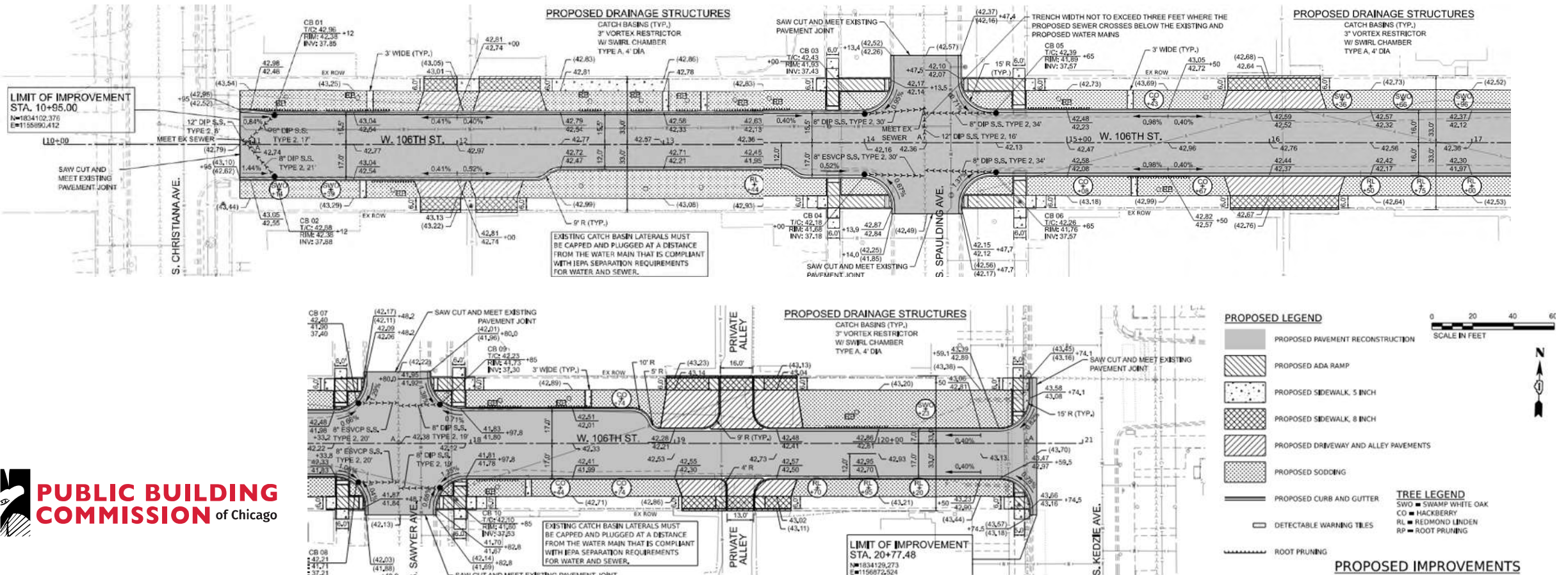
Note: Shaded cells represent CCDD Exclusion Areas



# Proposed Conditions

## Roadway

- Install 24'-34' roadway with curb & gutter (full depth pavement reconstruction)
- Construct new driveway and alley aprons for positive drainage
- Construct ADA ramps at Spaulding Ave, Sawyer Ave, and Kedzie Ave



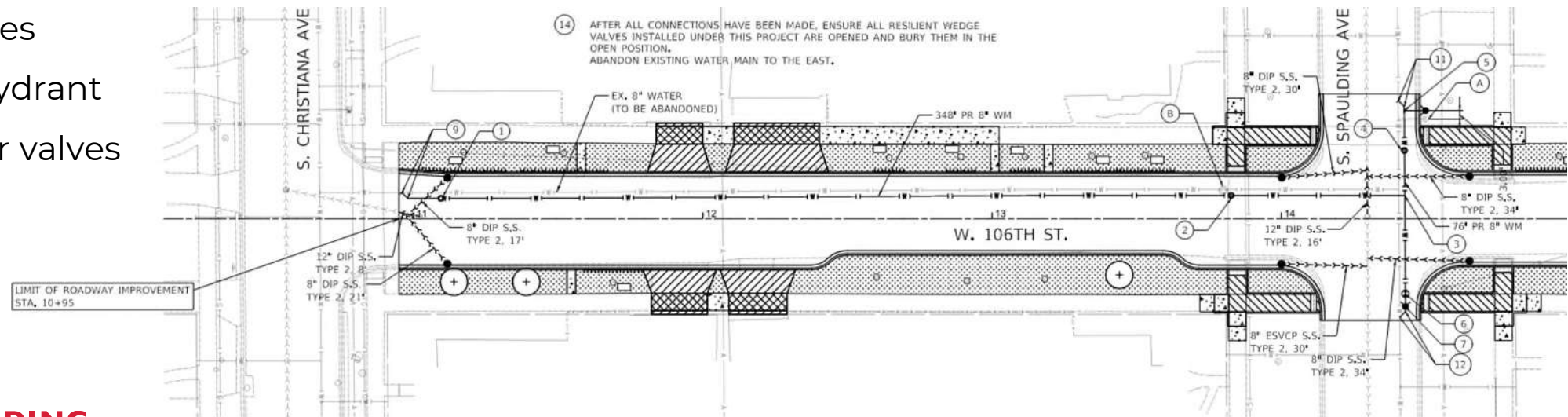
# Proposed Conditions

## Drainage & Water Main

- Install ten catch basins
- Install 70' of 8" ESVCP sewer laterals
- Install 174' of 8" DIP sewer laterals
- Install 24' of 12" DIP sewer in Spaulding Ave
- Install 432' of 8" DI water main between Christiana Ave and Spaulding Ave
- Abandon existing main
- No service lines
- Install 1 fire hydrant
- Install 3 water valves

## PROPOSED DRAINAGE STRUCTURES

CATCH BASINS (TYP.)  
3" VORTEX RESTRICTOR  
W/ SWIRL CHAMBER  
TYPE A, 4' DIA



# Project Overview

## Project Locations

- **W 107<sup>th</sup> St – S Spaulding Ave to S Kedzie Ave**



## Project Overview

- **Existing Conditions**
- **Proposed Work**

# Existing Conditions

## Roadway

- Roadway width varies from 29'-43'
- 2 intersections
  - S. Spaulding Avenue
  - S. Sawyer Avenue



# Existing Conditions

## Concerns

- No curb and gutter
- Lack of curb and gutter leads to flooding on the street and on private property



# Existing Conditions

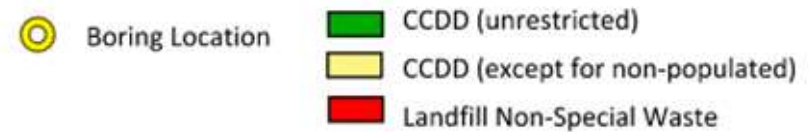
## Environmental

- Environmental report available in Book 3, Appendix C Part 3
- Soil Disposal Classification is Landfill as Non-Special Waste & CCDD

**Soil Disposal Summary**

Soil Boring ID	Interval (ft bgs)	Classification	Parameter(s) exceeding the MAC(s)	Eligible for CCDD or USFO Disposal	Soil Disposal Classification
107-B1	0-5	Unrestricted	None	Yes	CCDD (unrestricted)
107-B2	0-5	669.05(a)(5)	Benzo(a)pyrene and Arsenic	No	Landfill as Non-Special Waste (NSW)
107-B3	0-5	669.05(a)(5)	Benzo(b)fluoranthene, Dibenz(a,h)anthracene and Arsenic	No	Landfill as Non-Special Waste (NSW)
107-B4	0-5	669.05(a)(5)	Benzo(a)anthracene, Benzo(a)pyrene, Benzo(b)fluoranthene, Dibenz(a,h)anthracene, and Chromium	No	Landfill as Non-Special Waste (NSW)

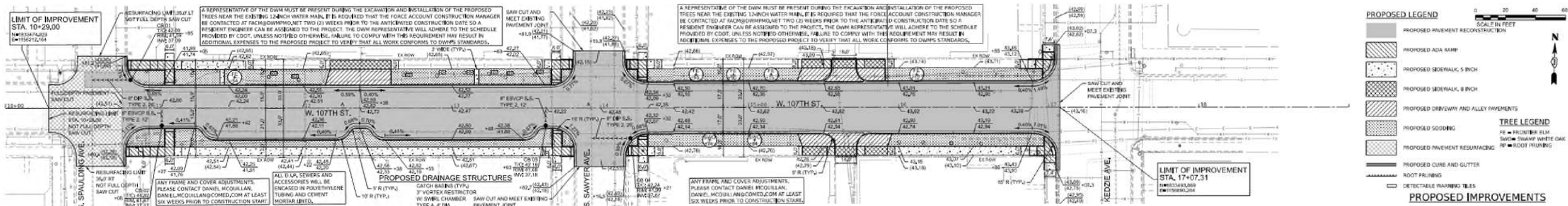
Note: Shaded cells represent CCDD Exclusion Areas



# Proposed Conditions

## Roadway

- Install 28'-36' roadway with curb & gutter (full depth pavement reconstruction) between Spaulding Ave and Sawyer Ave
- Install 34' roadway with curb & gutter (full depth pavement reconstruction) between Sawyer Ave and Kedzie Ave
- Pavement resurfacing at Spaulding Ave
- Construct new driveway and alley aprons for positive drainage
- Construct ADA ramps at Spaulding Ave, Sawyer Ave, and Kedzie Ave



# Proposed Conditions

## Drainage

- Install four catch basins
- Install 24' of 8" ESVCP sewer laterals
- Install 52' of 8" DIP sewer laterals

## PROPOSED DRAINAGE STRUCTURES

CATCH BASINS (TYP.)  
3" VORTEX RESTRICTOR  
W/ SWIRL CHAMBER  
TYPE A, 4' DIA

# Project Overview

## Project Locations

- **W 114<sup>th</sup> St – S Rockwell St to S Western Ave**



## Project Overview

- **Existing Conditions**
- **Proposed Work**

# Existing Conditions

## Roadway

- Roadway width varies from 15'-17' between Rockwell St and Maplewood Ave
- Roadway width varies from 25'-31' between Maplewood Ave and Western Ave
- 4 intersections
  - S. Rockwell Street
  - S. Maplewood Avenue
  - S. Campbell Avenue
  - S. Artesian Avenue
- Railroad Protective Liability Insurance required



# Existing Conditions

## Concerns

- No curb and gutter
- Poor pavement condition
- Lack of curb and gutter leads to flooding on the street and on private property



# Existing Conditions

## Environmental

- Environmental report available in Book 3, Appendix C Part 4
- Soil Disposal Classification is Landfill as Non-Special Waste & CCDD

Soil Disposal Summary

Soil Boring ID	Interval (ft bgs)	Classification	Parameter(s) exceeding the MAC(s)	Eligible for CCDD or USFO Disposal	Soil Disposal Classification
114-B7	0-5	unrestricted	None – chromium (alternative MAC)	Yes	CCDD (all counties)
114-B8	0-5	669.05(a)(5)	chromium, and pH	No	Landfill as Non-Special Waste (NSW)
114-B9	0-5	669.05(a)(5)	Arsenic and chromium	No	Landfill as Non-Special Waste (NSW)
114-B10	0-5	669.05(a)(3)	Benzo(a)pyrene, dibenzo(a,h)anthracene, arsenic (outside MSA), chromium (alt MAC*), and mercury (alt MAC*)	Yes	CCDD (MSA county and Chicago only)
114-B11	0-5	669.05(a)(3)	Benzo(a)pyrene, benzo(b)fluoranthene, and dibenzo(a,h)anthracene	Yes	CCDD (MSA county and Chicago only)
114-B12	0-5	669.05(a)(3)	Benzo(a)pyrene	Yes	CCDD (except for non-populated)
114-B13	0-5	669.05(a)(3)	Benzo(a)pyrene, benzo(b)fluoranthene, dibenzo(a,h)anthracene, arsenic (outside MSA), chromium (alt MAC*), and mercury (alt MAC*)	Yes	CCDD (MSA county and Chicago only)

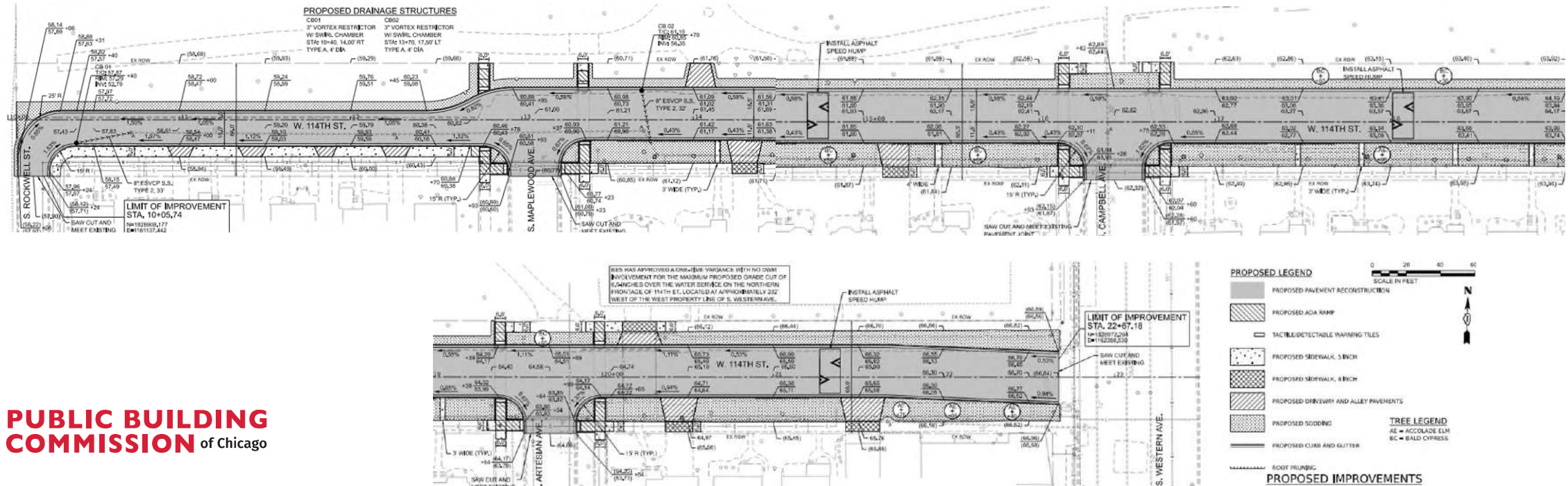
Note: Shaded cells represent CCDD Exclusion Areas. \*interpolated qualification.



# Proposed Conditions

## Roadway

- Install 20' roadway with curb & gutter (full depth pavement reconstruction) between Rockwell and Maplewood
- Install 30' roadway with curb & gutter (full depth pavement reconstruction) between Maplewood and Western
- Construct new driveway aprons for positive drainage
- Construct ADA ramps at Maplewood Ave, Campbell Ave, and Artesian Ave
- Install three speed humps



# Proposed Conditions

## Drainage

- Install two catch basins
- Install 65' of 8" ESCVP sewer laterals

## PROPOSED DRAINAGE STRUCTURES

CATCH BASINS (TYP.)  
3" VORTEX RESTRICTOR  
W/ SWIRL CHAMBER  
TYPE A, 4' DIA

# Proposed Conditions

- **W 92<sup>nd</sup> St – S Leavitt St to S Hamilton Ave**
- **W 106<sup>th</sup> St – S Christiana Ave to S Kedzie Ave**
- **W 107<sup>th</sup> St – S Spaulding Ave to S Kedzie Ave**
- **W 114<sup>th</sup> St – S Rockwell St to S Western Ave**

## Landscaping

- Refer to contract documents for removal or protection of existing trees and root pruning limits
- New trees to be planted in the parkways
- New grass sod to be placed in the parkways

### 92<sup>nd</sup> St

SYMBOL	NAME	COMMON NAME	QUANTITY
(+) SWO	QUERCUS BICOLOR	SWAMP WHITE OAK	1 EACH
		TOTALS	1 EACH

### 106<sup>th</sup> St

SYMBOL	NAME	COMMON NAME	QUANTITY
(+) SWO	QUERCUS BICOLOR	SWAMP WHITE OAK	6 EACH
(+) RL	TILIC AMERICANA 'REDMOND'	REDMOND LINDEN	7 EACH
(+) CO	CELTIS OCCIDENTALIS	HACKBERRY	6 EACH
		TOTALS	19 EACH

### 107<sup>th</sup> St

SYMBOL	NAME	COMMON NAME	QUANTITY
(+) SWO	QUERCUS BICOLOR	SWAMP WHITE OAK	2 EACH
(+) FE	ULMUS 'FRONTIER'	FRONTIER ELM	5 EACH
(+)		TOTALS	7 EACH

### 114<sup>th</sup> St

SYMBOL	NAME	COMMON NAME	QUANTITY
(+) AE	ULMUS CARPINIFOLIA MORTON	ACCOLADE ELM	4 EACH
(+) BC	TAXODIUM DISTICHUM	BALD CYPRESS	5 EACH
(+)		TOTALS	9 EACH

# Proposed Conditions

- **W 92<sup>nd</sup> St – S Leavitt St to S Hamilton Ave**
- **W 106<sup>th</sup> St – S Christiana Ave to S Kedzie Ave**
- **W 107<sup>th</sup> St – S Spaulding Ave to S Kedzie Ave**
- **W 114<sup>th</sup> St – S Rockwell St to S Western Ave**

## Lighting

- Install new street lighting including piggyback lighting for pedestrians
- One light pole provides lighting for both the street and sidewalk
- Upgraded LED lamps
- Cobra Head for street luminaire
- Acorn Head for the pedestrian luminaire



Existing Street Lighting



Proposed Street Lighting

# Q & A